

SPL 1452

NAMOLI & WAINIVAU

GOLD AND COPPER PROSPECTS

(Multiple Namosi-like Exploration Targets)

SPL1452 being contiguous with the Namosi SPL1420 owned by the Newcrest Joint Venture and with the same type and age of porphyry intrusive has strong potential for discovery of gold-copper deposits similar to those at Namosi

NAMOLI-WAINIVAU INDICATIVE EXPLORATION BUDGET 2015

	AUD
Induced polarisation (IP) survey & interpretation	250,000
Geological mapping, sampling, drill management	240,000
Mobilisation of diamond drill/bulldozer	30,000
Bulldozer hire	150,000
Diamond drilling (10 holes totalling 10,000m)	2,000,000
Sample preparation (core saw and operators)	100,000
Assaying half-core drill samples	160,000
Accommodation/field supplies/fuel	50,000
Transportation/freight/insurances	<u>20,000</u>
Total	\$3,000,000

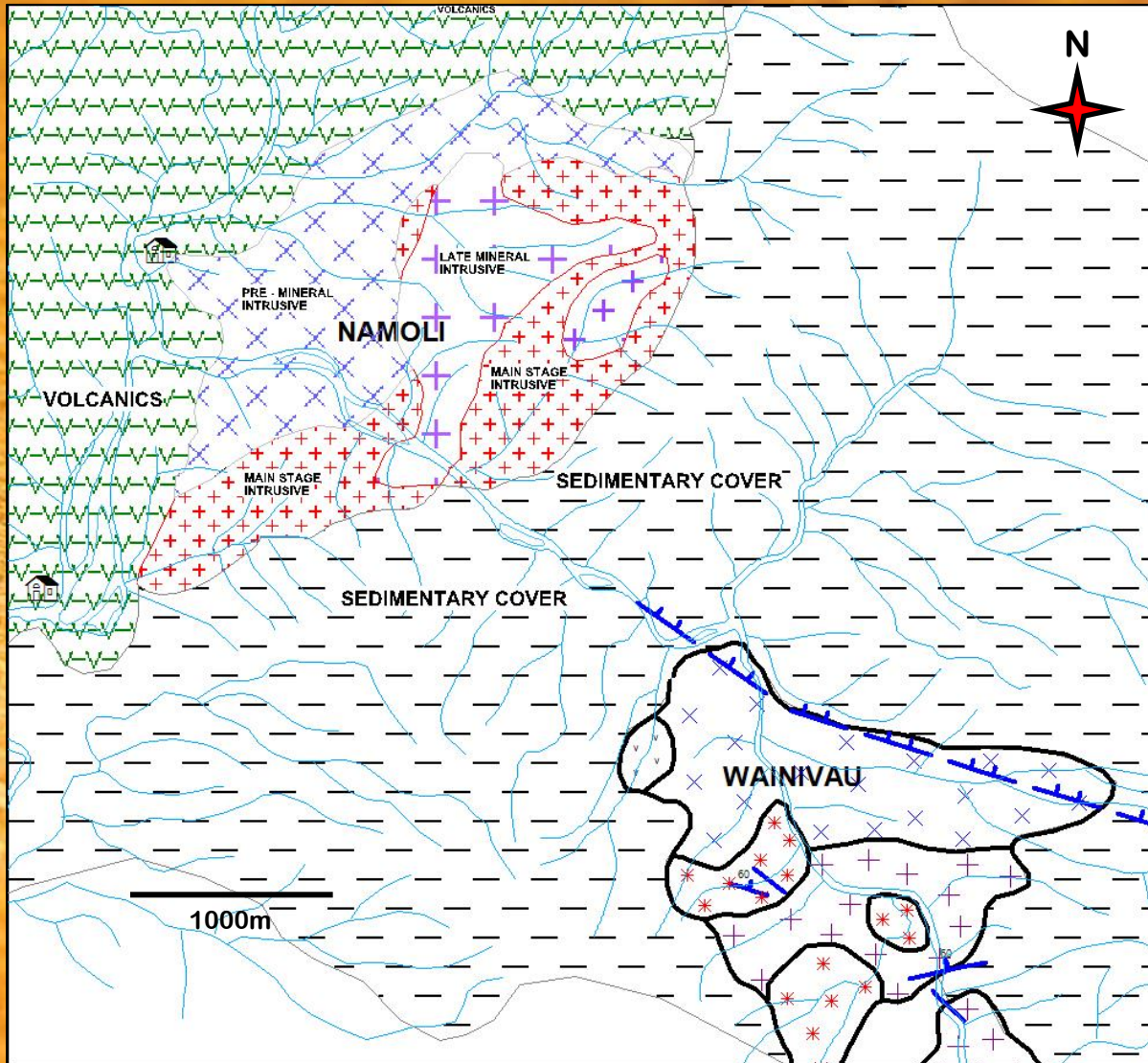
Schedule of Funding 2015

April (IP program & support)	600,000
August (diamond drill program mobilisation)	2,000,000
November (sample prep/assaying)	<u>400,000</u>
Total	\$3,000,000



NAMOLI GOLD-COPPER PROSPECT

Location Map Namoli & Wainivau Gold & Copper Prospects

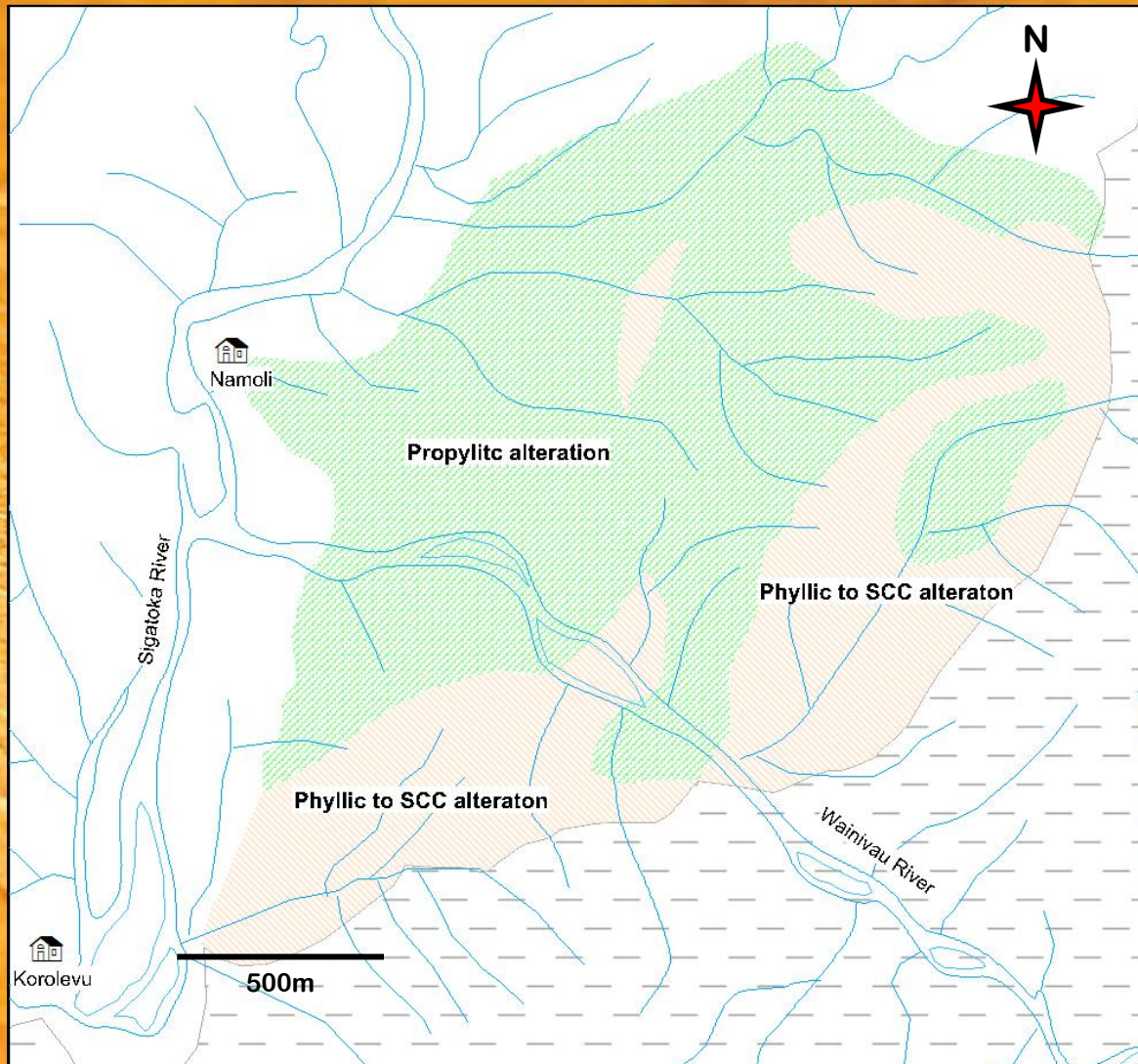


The Namoli & Wainivau prospects are located approximately 2km apart along the course of Wainivau Creek.

The Namoli Prospect is partially exposed and covers an area of approximately 3.5km x 1km.

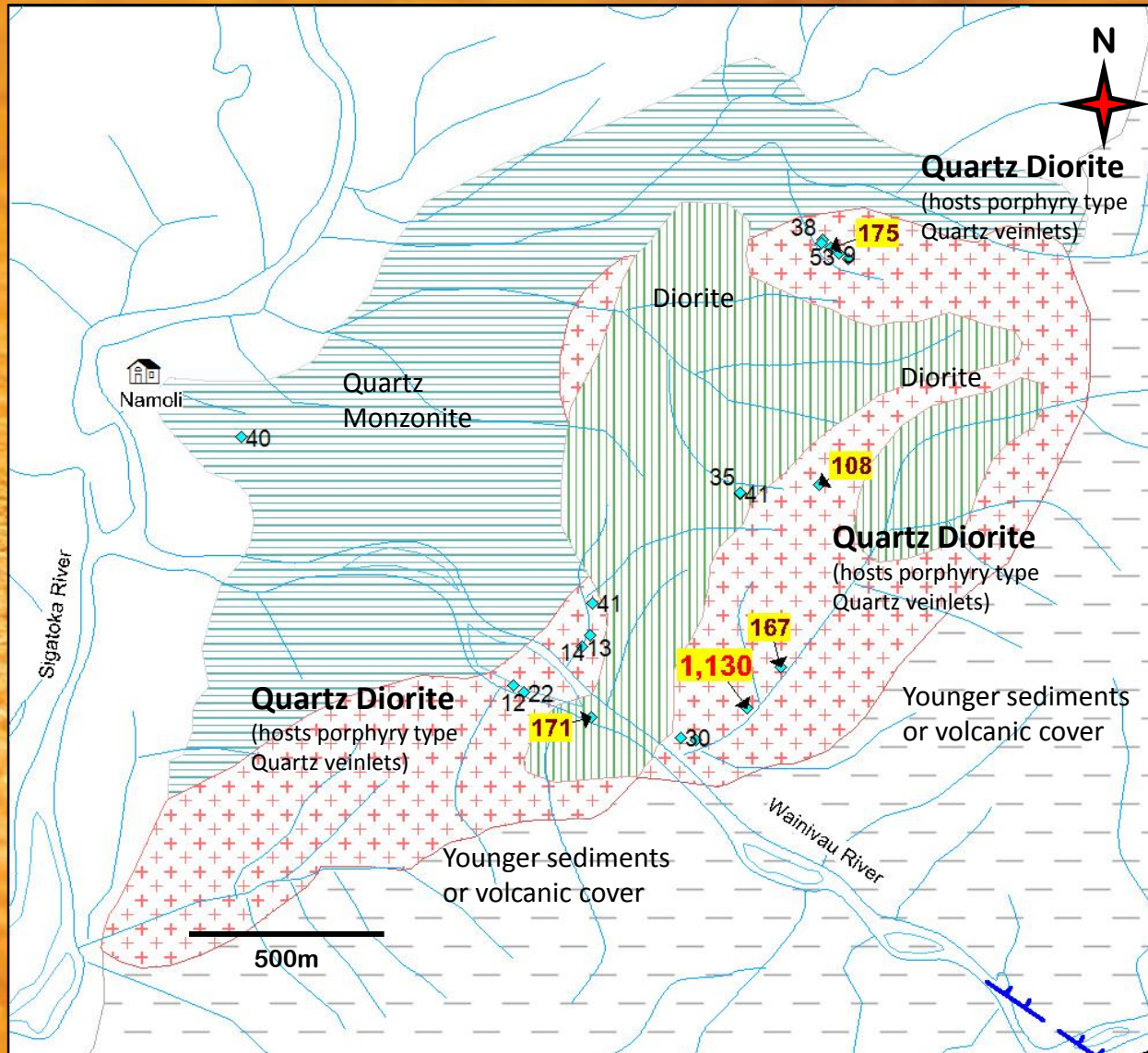
The Wainivau Prospect is also partially exposed and covers an area of 2km x 2km.

Alteration Map of the Namoli Gold-Copper Prospect



Propylitic, Phyllic and Sericite-Chlorite-Clay (SCC) altered intrusives are typical of the tops of mineralised porphyry systems.

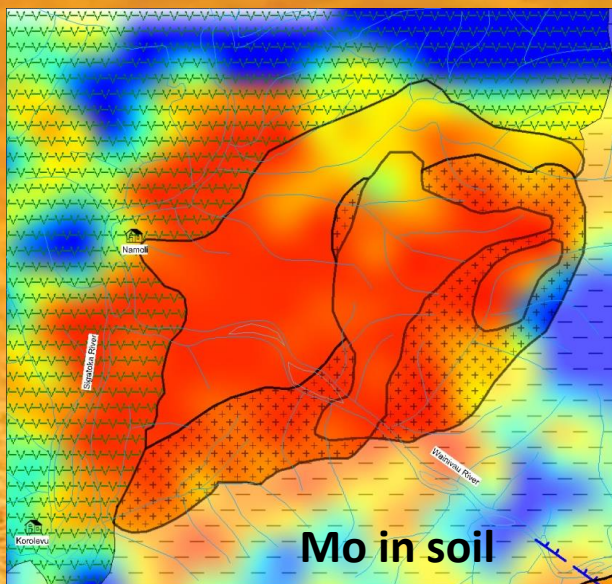
Namoli Gold-Copper Prospect



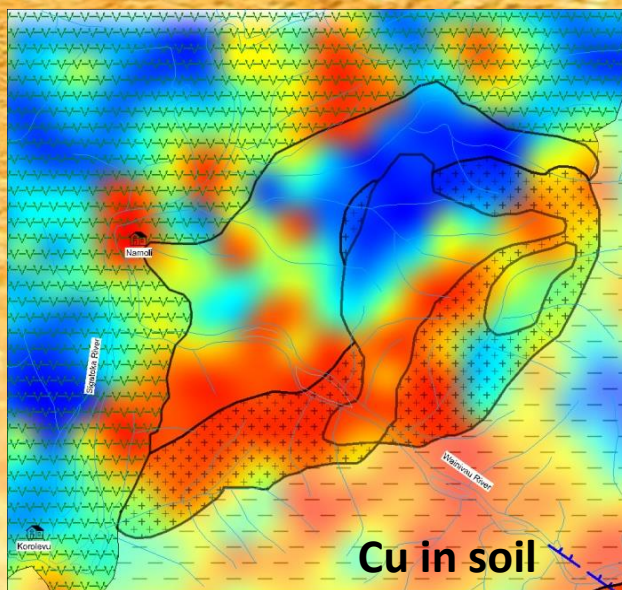
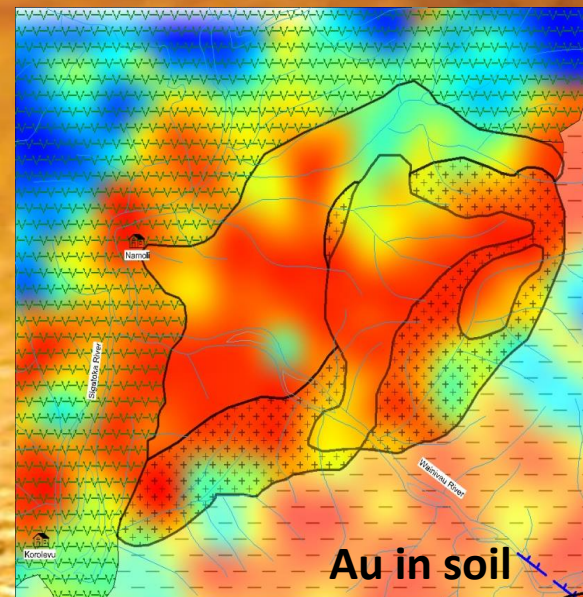
Copper assays (in ppm) from rock chip samples from the mineralised and altered porphyry outcrops at the Namoli Prospect. Outcrops are rare due to cover by younger sediments or volcanics.

The values are typical of the top of a mineralised intrusive complex and are expected to increase deeper into the porphyry.

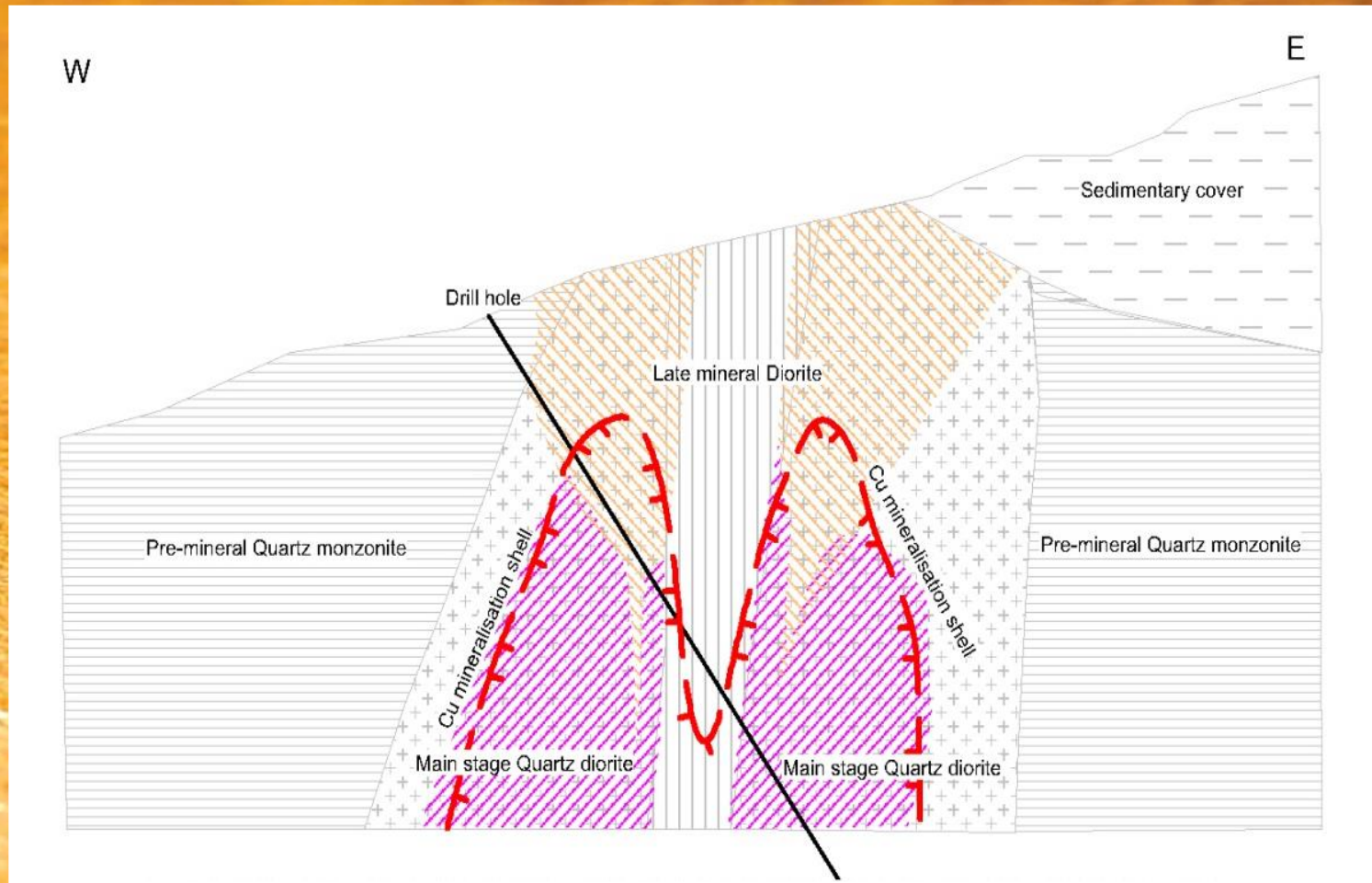
Namoli Gold-Copper Prospect



Ionic leach soil geochemical plots for Gold, Molybdenum and Copper over the Namoli Prospect. Hot colours (red-orange) represent stronger anomalies and cool colours (blue) are lower numbers.



Schematic section projecting lithology below surface at Namoli

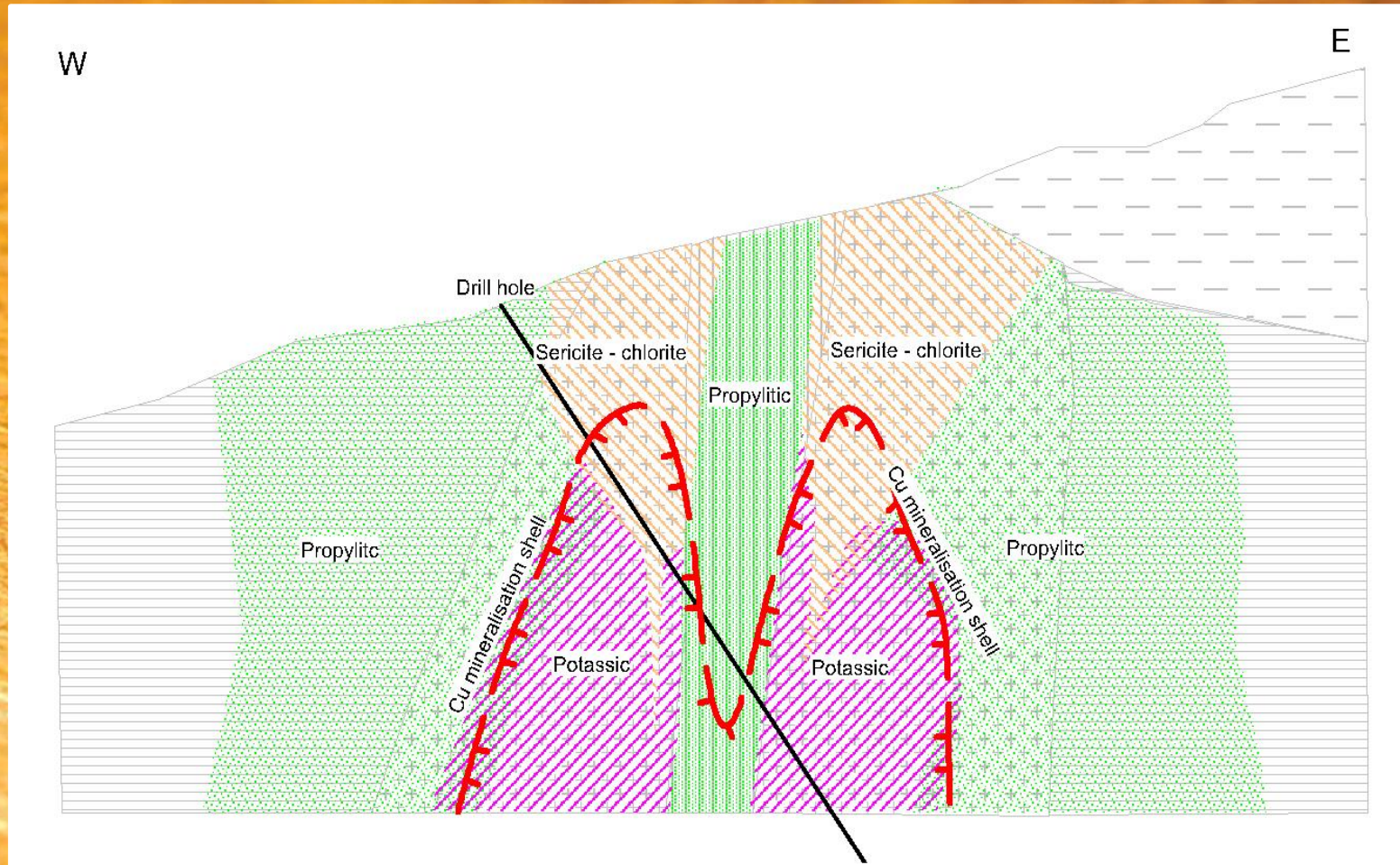


CONCEPTUAL CROSS SECTION OF NAMOLI GOLD-COPPER PROSPECT

Not drawn to scale

Note: The drill hole plot is a projection only and the hole has not yet been drilled.

Schematic section projecting rock alteration below surface at Namoli

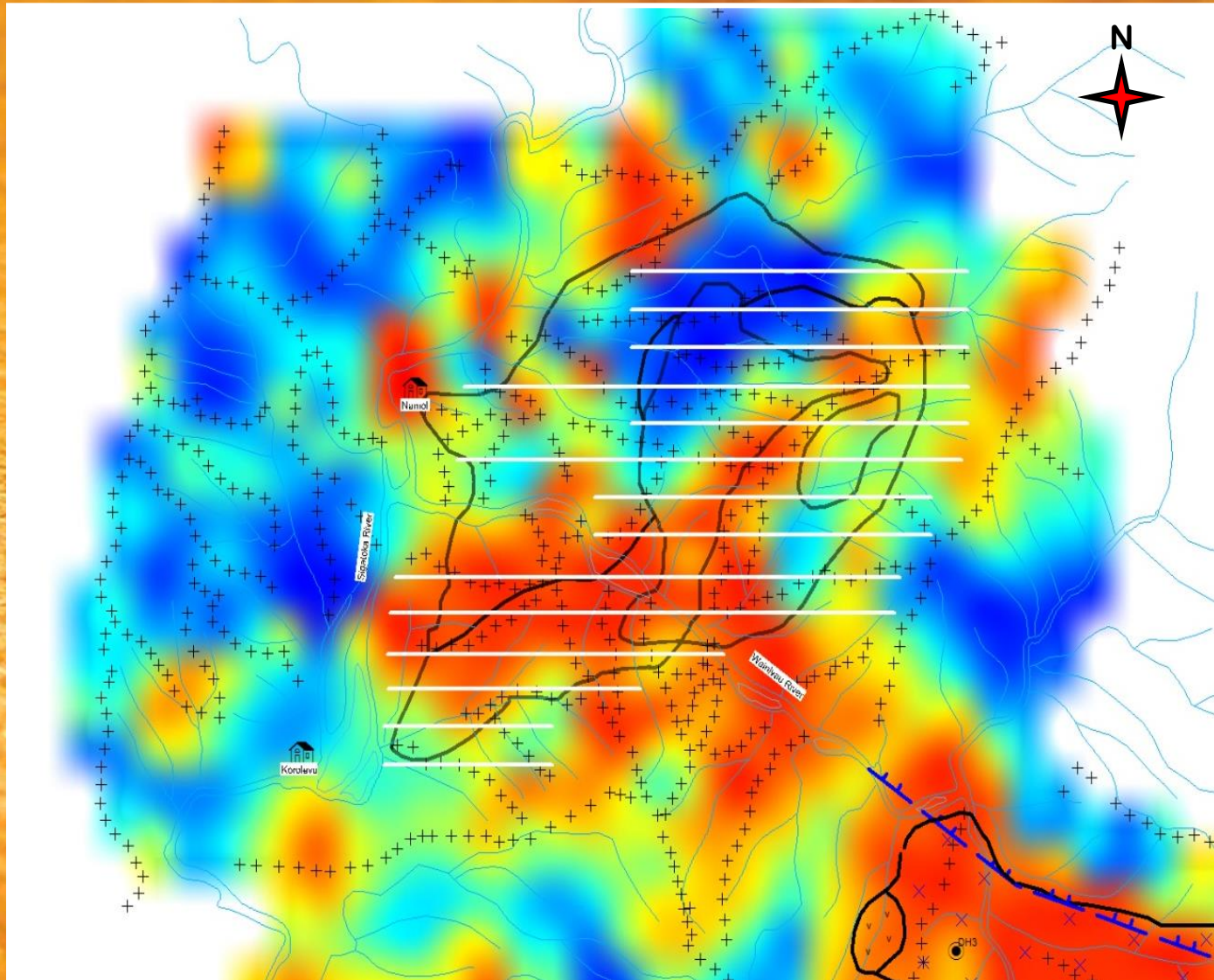


CONCEPTUAL CROSS SECTION OF NAMOLI GOLD-COPPER PROSPECT

Not drawn to scale

Note: The drill hole plot is a projection only and the hole has not yet been drilled.

Namoli Gold-Copper Prospect



Proposed 3D
Induced Polarisation
(IP) program of
30 line-kms.

A surface
magnetometer
survey will cover
45 line-kms.

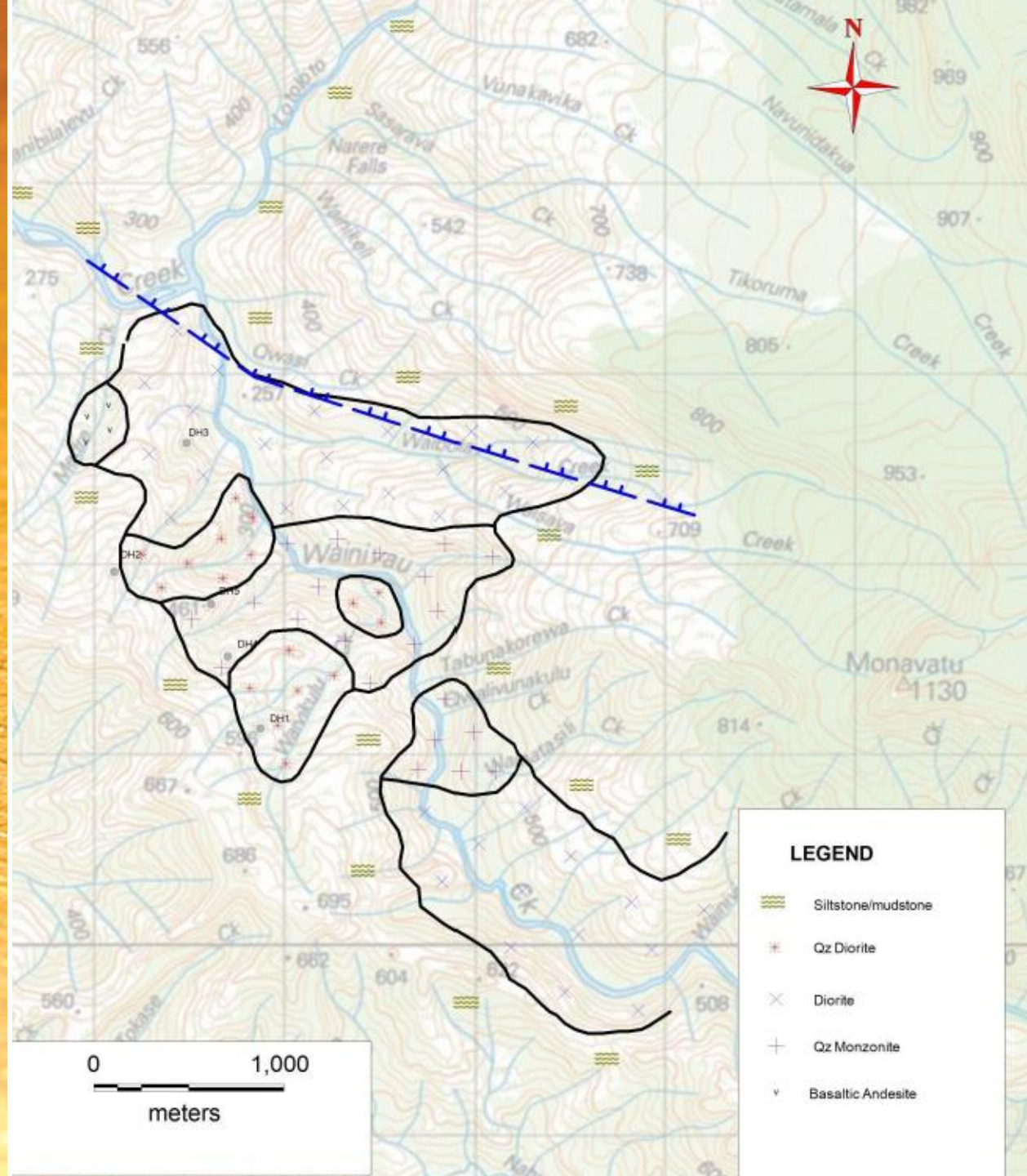
The geophysical
programs will map
the subsurface
mineralisation and
provide drill targets.



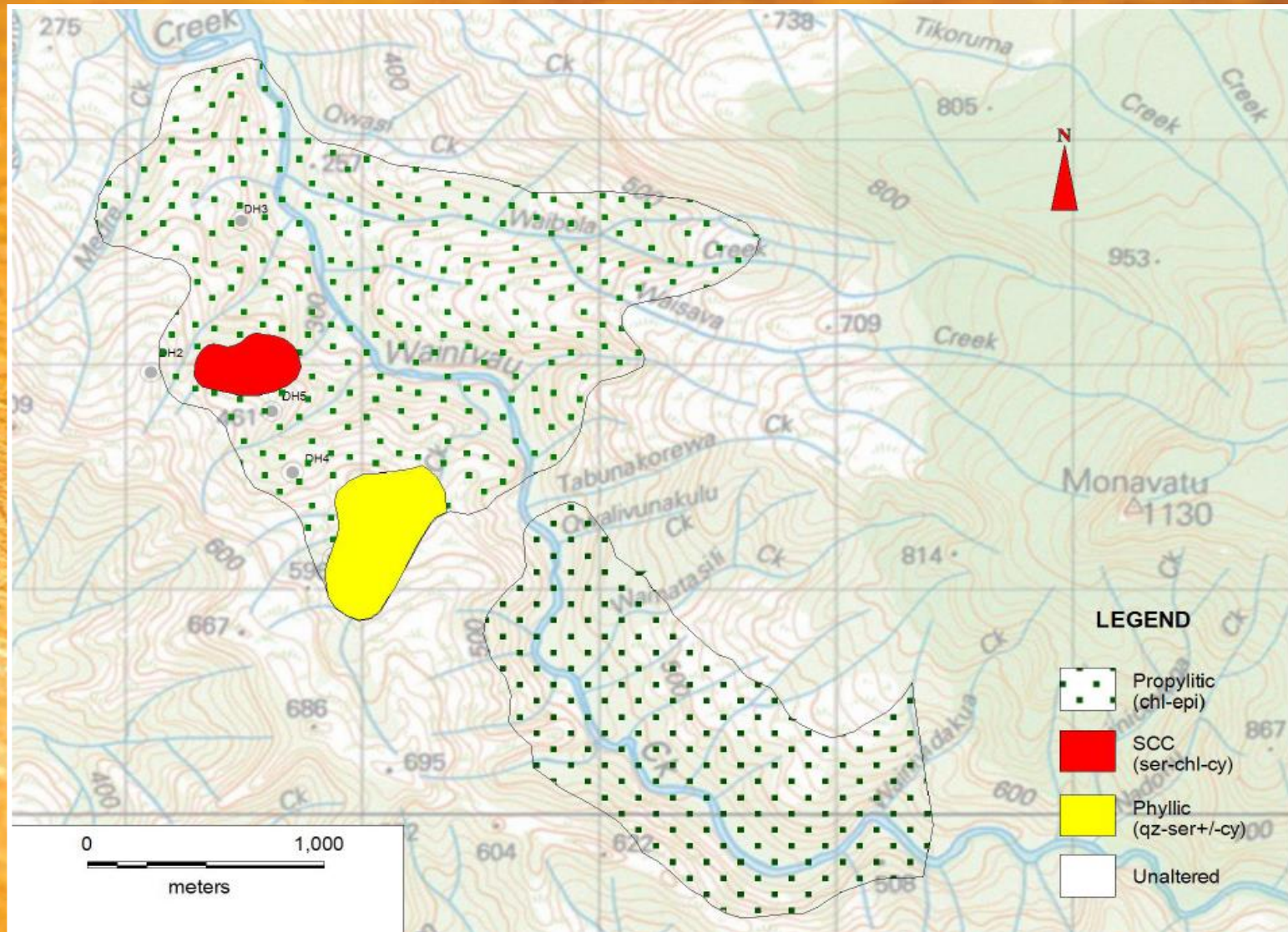
Note: The whitish coloured land slip is exposing intensely hydrothermally altered intrusive from the Wainivau porphyry complex.

Geology Map of the Wainivau Gold-Copper Prospect

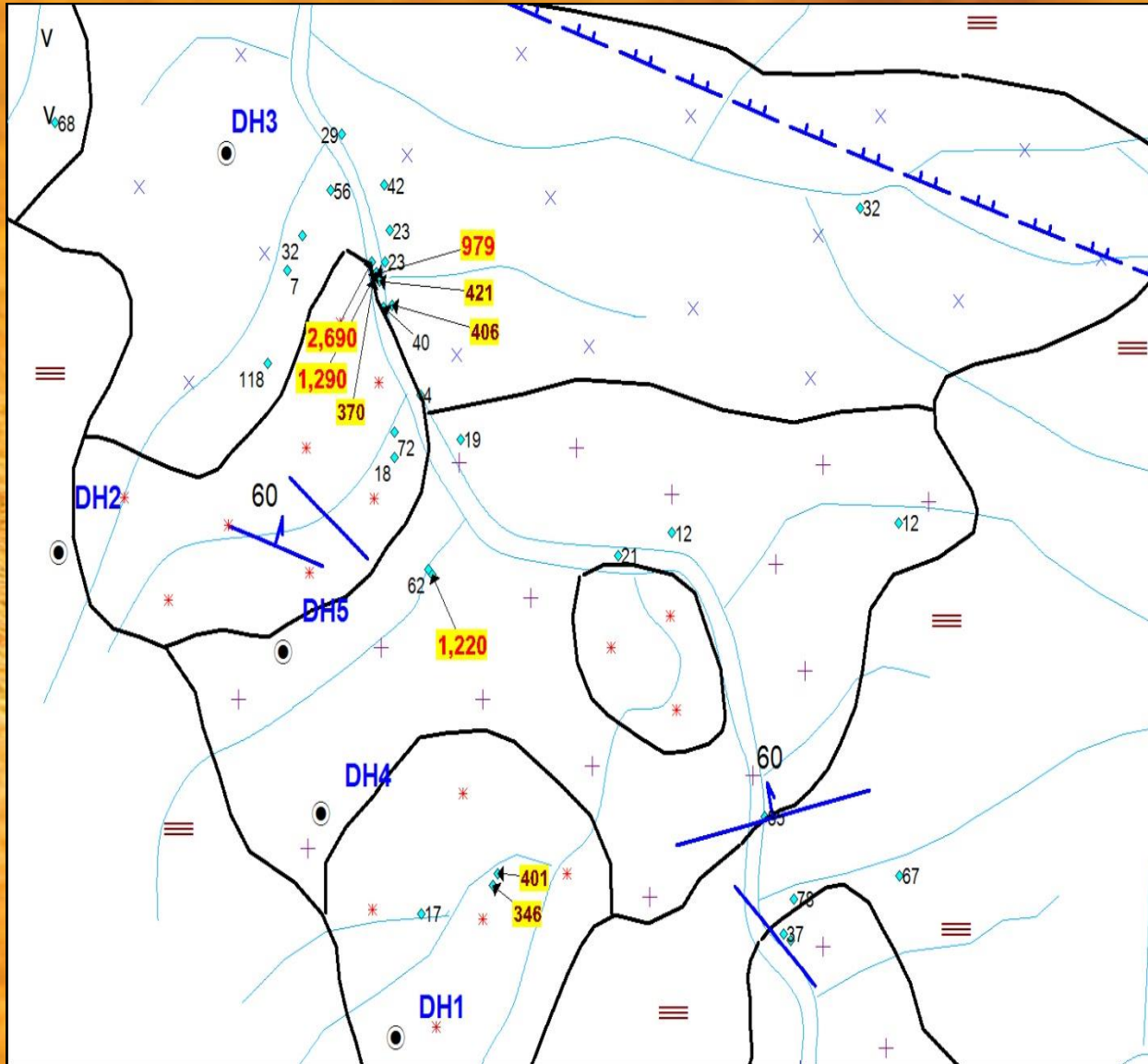
The Quartz (Qz)
Diorite unit is copper
mineralised in outcrop
near Wainivau Creek
(see photographs
later in this
presentation).



Wainivau Gold-Copper Prospect alteration map



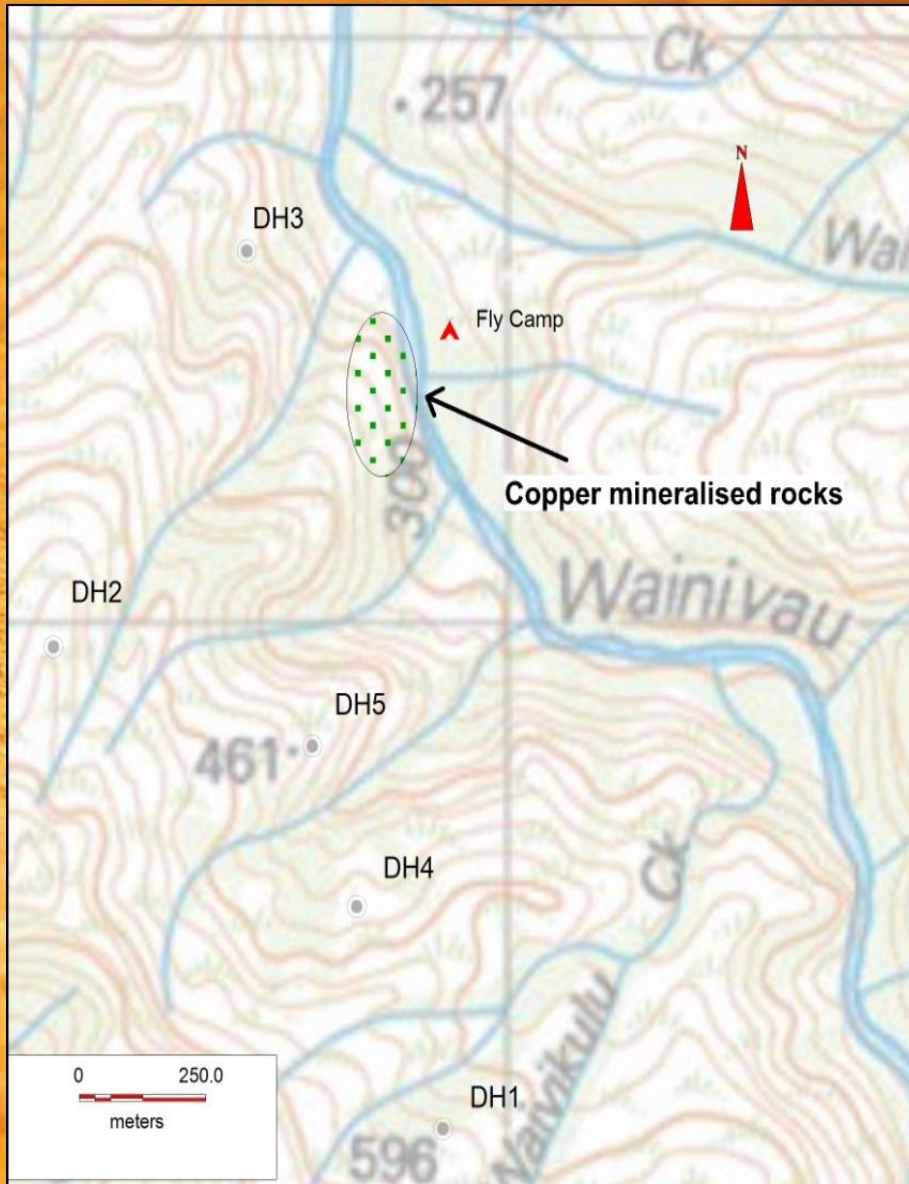
Wainivau Gold-Copper Prospect



Copper assays (in ppm) of rock chip samples from the mineralised and altered porphyry outcrops at the Wainivau Prospect. Outcrops are rare due to cover by younger sediments or volcanics.

The values are typical of the top of a mineralised intrusive complex and are expected to increase deeper into the porphyry.

Wainivau Gold-Copper Prospect



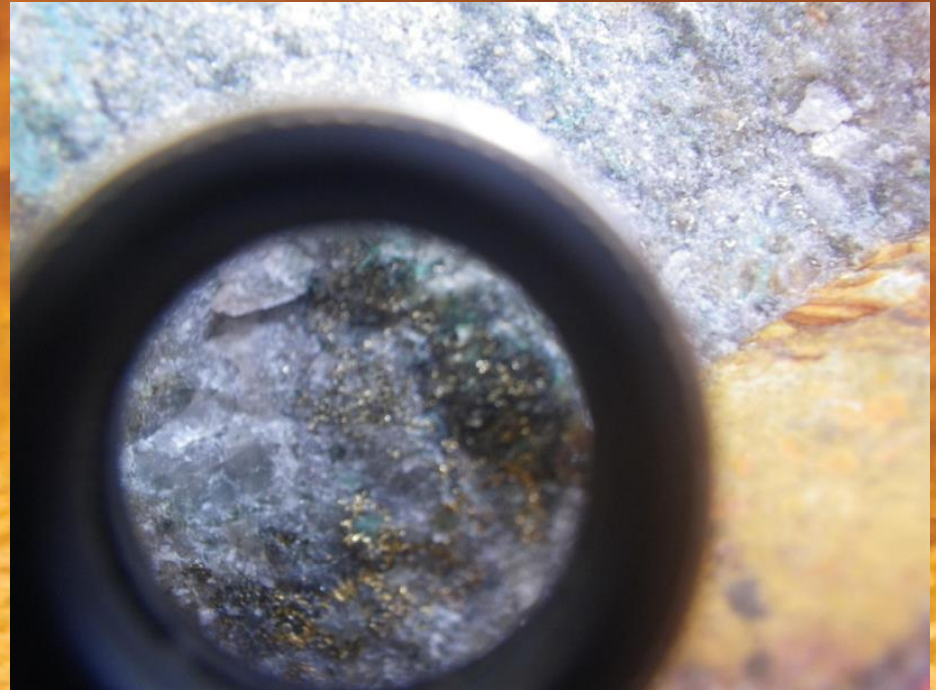
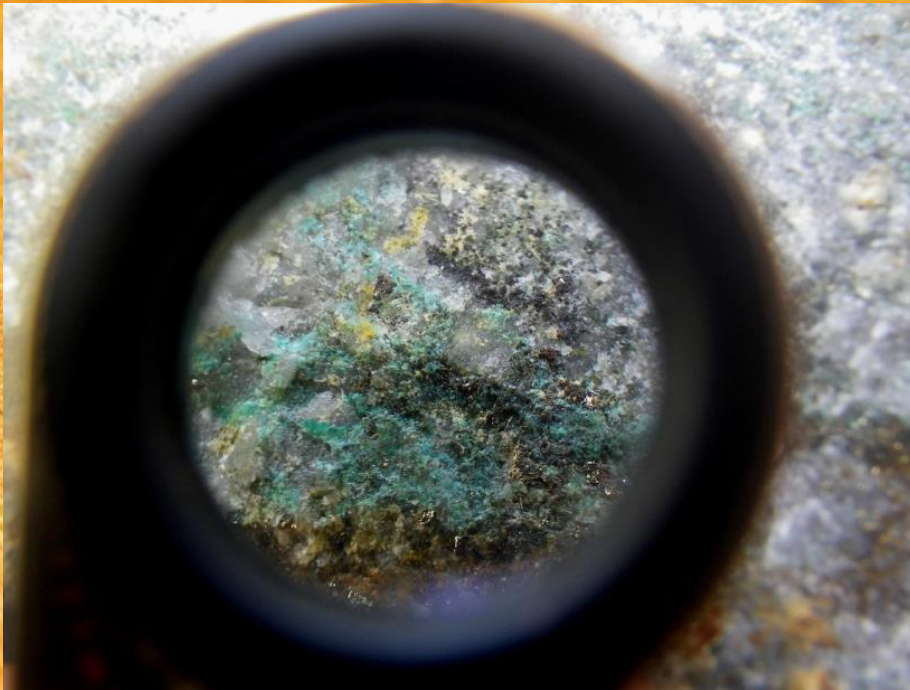
Location of Copper mineralised outcrops near Wainivau Creek at the Wainivau Prospect.

Drill holes designated DH1 to DH5 were drilled in the 1970s. All holes contained anomalous copper (up to 2,000ppm Cu) but were vertical in orientation, sited at the edges of the intrusive and too shallow to intersect where copper-gold mineralisation is interpreted to be best developed.

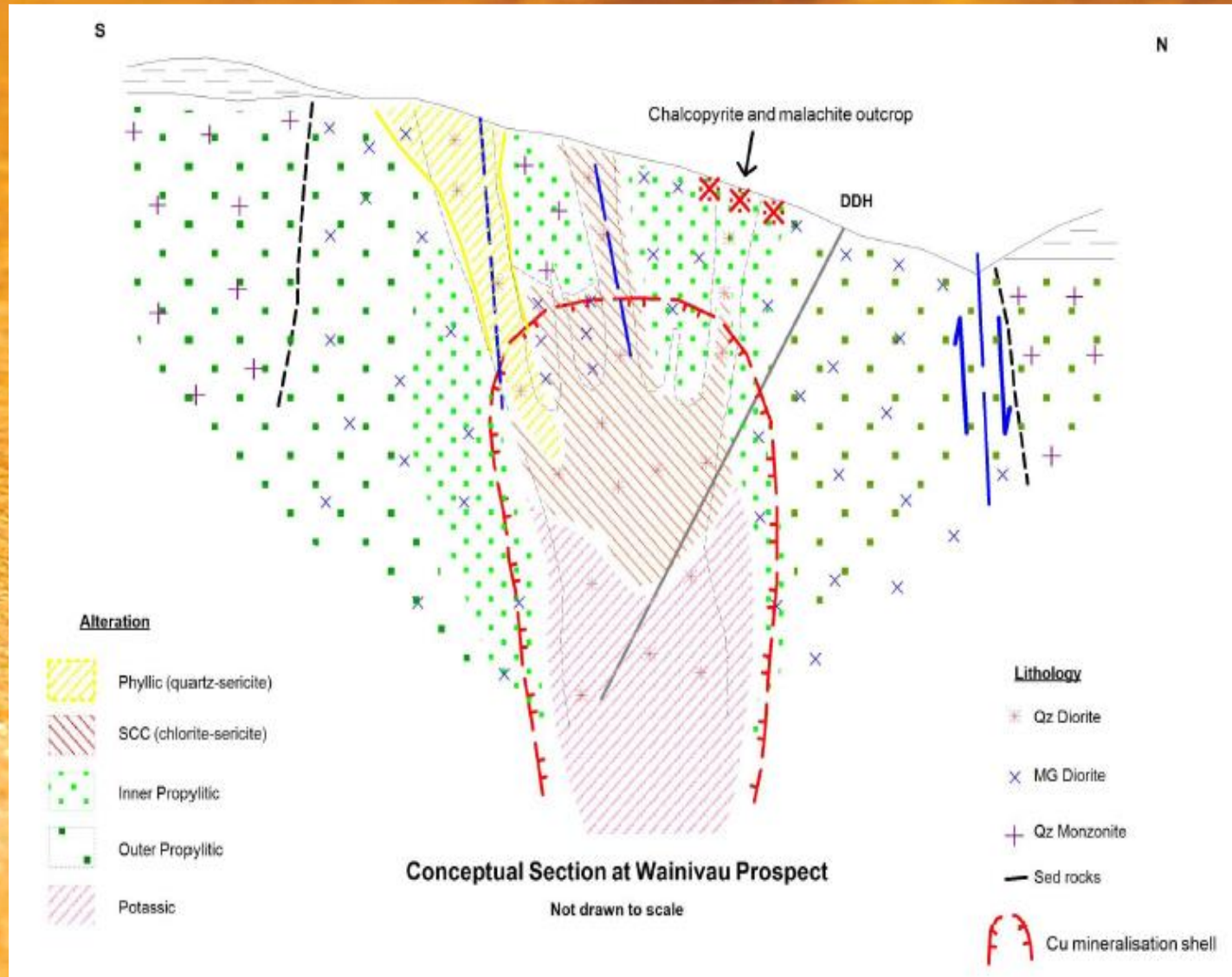
**Wainivau Prospect porphyry Cu-Au prospect discovery
outcrop sample of altered porphyry containing
malachite and chalcopryite (Cu) and magnetite veins**



**Magnified views of copper
minerals from outcrop near
Wainivau Creek**

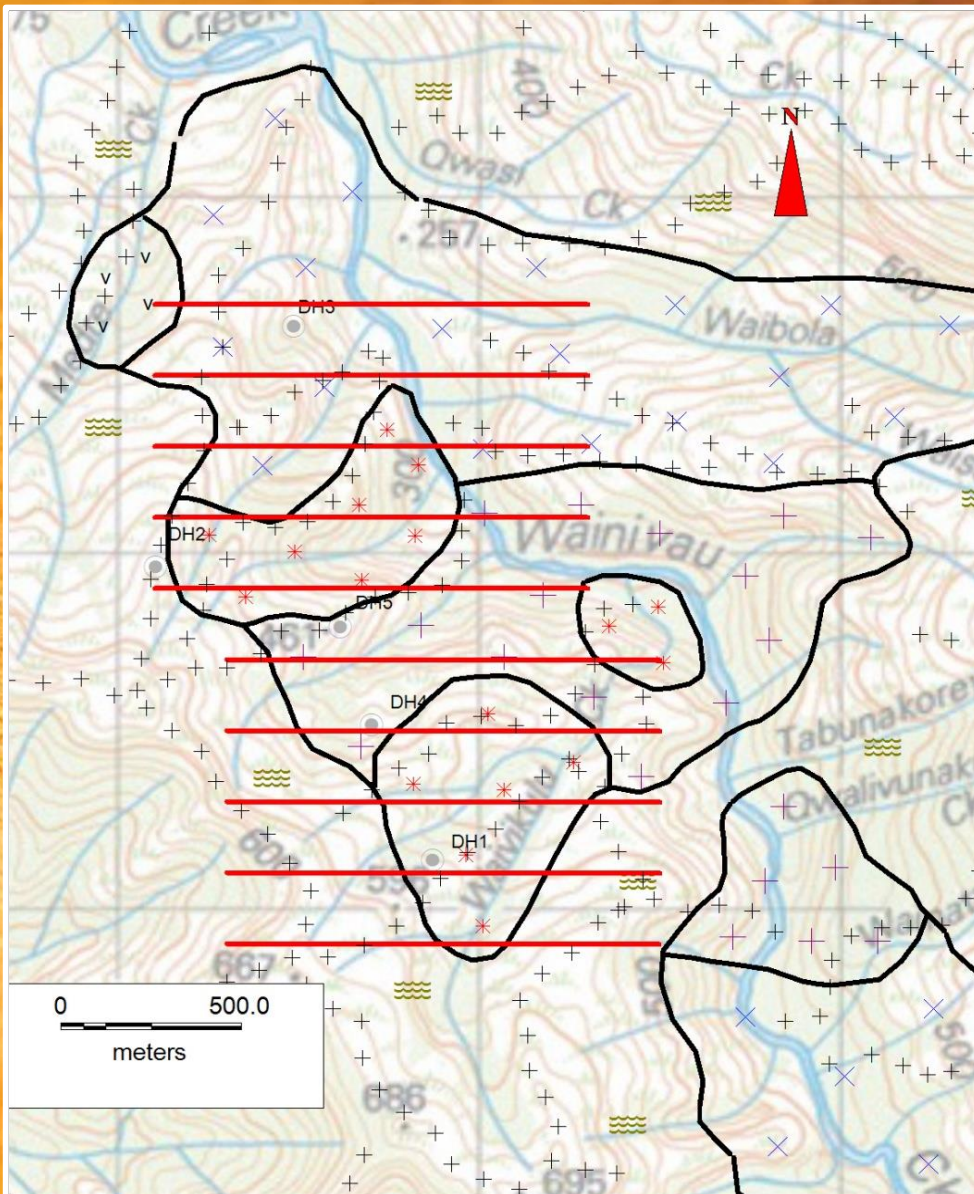


Schematic cross section projecting rock types and alteration below surface mapping at the Wainivau Prospect



Note: The drill hole plot is a projection only and the hole has not yet been drilled.

Wainivau Gold-Copper Prospect

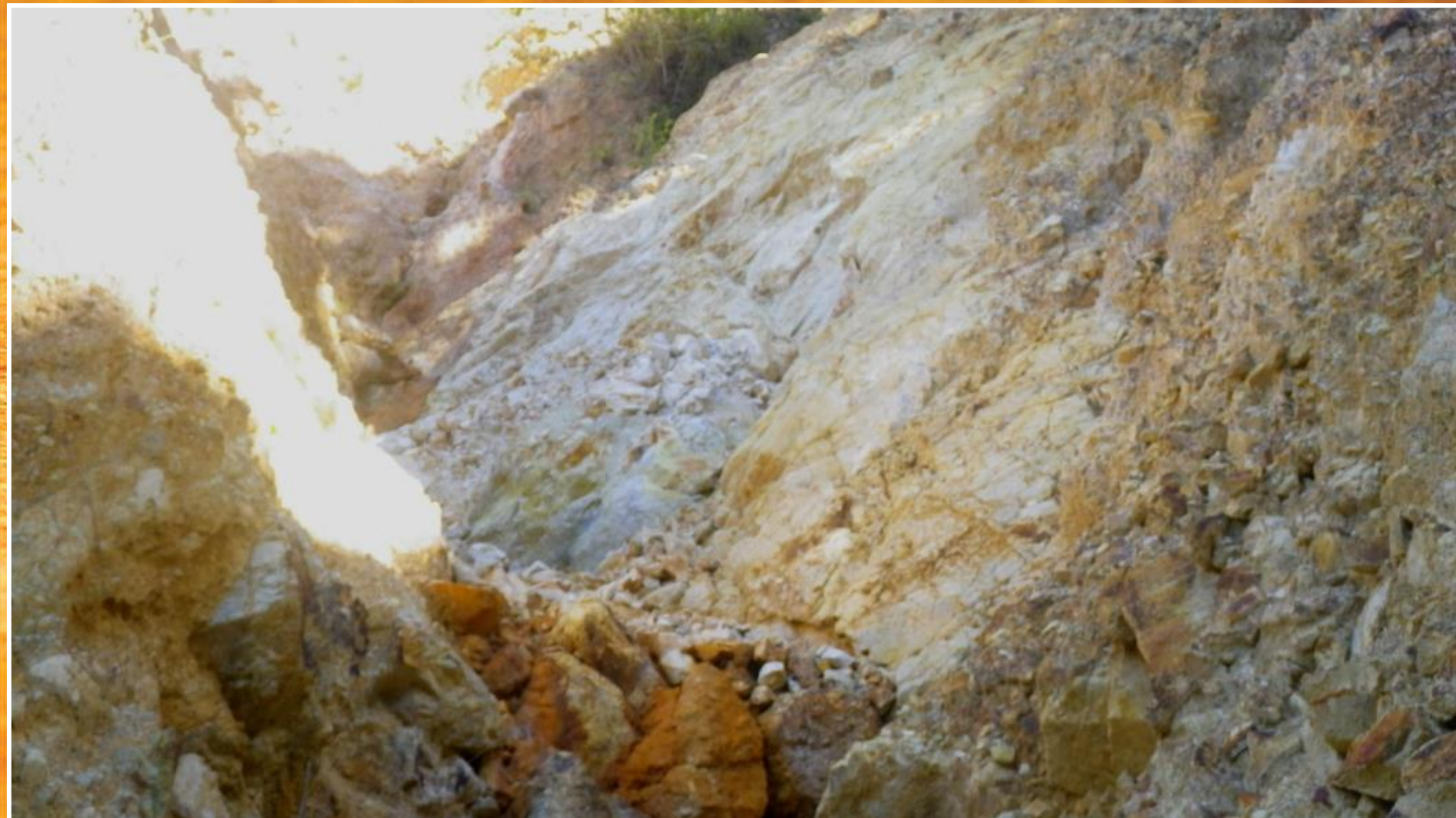


Proposed 3D Induced Polarisation (IP) program of 15 line-kms.

A surface magnetometer survey will cover 25 line-kms.

The geophysical programs will map the subsurface mineralisation and provide drill targets.

Intense hydrothermal alteration at the Wainivau Prospect
Potential for discovery of a high-value gold-copper deposit



Competent Person's Statement

Competent Person:

The contents of this presentation that relate to geology and exploration results are based on information compiled by Dome's CEO, John McCarthy, who is a Member of the Australasian Institute of Mining and Metallurgy.

Mr McCarthy has sufficient experience relevant to the styles of mineralisation and types of deposits under consideration and to the activity being undertaken to qualify as a "Competent Person", as defined in 2012 edition of the Australian Code for Reporting of Exploration Results, Mineral Resources and Ore Reserves (the JORC 2012 code). Mr McCarthy indirectly holds shares in the Company and consents to the inclusion in this presentation of the matters compiled by him in the form and context in which they appear.

The exploration results were reported in a release to the ASX dated 23/10/14 and this release should be referred to for Competent Person statements and JORC 2012 Table 1 disclosures.

Further details of JORC 2012 compliant information, such as Table 1 disclosures, can be found in Dome's previous ASX releases, quarterly activities reports or at the Company's website:

www.domegoldmines.com.au



CONTACTS

Dome Gold Mines Limited

ABN 49 151 996 566

Level 7, 71 Macquarie Street

Sydney NSW 2000 Australia

GPO Box 1759

Sydney NSW 2001 Australia

W www.domegoldmines.com.au

Investor Enquiries

Garry Lowder, Chairman

E glowder@domegoldmines.com.au

T +61 2 8203 5620

M +61 417 212 099

Jack McCarthy, CEO

E jack@domegoldmines.com.au

T +61 2 8203 5620

M +61 429 034 055

