



Giant Scale Oil Exploration Potential Spotlight on Namibia

John Begg CEO Good Oil Conference, September 2018

Disclaimer



These materials are strictly confidential and are being supplied to you solely for your information and should not be reproduced in any form, redistributed or passed on, directly or indirectly, to any other person or published, in whole or part, by any medium or for any purpose. Failure to comply this restriction may constitute a violation of applicable securities laws.

These materials do not constitute or form part of any offer or invitation to sell or issue, or any solicitation of any offer to purchase or subscribe for, or any offer to underwrite or otherwise acquire any securities, nor shall any part of these materials or fact of their distribution or communication form the basis of, or be relied on in connection with, any contract, commitment or investment decision whatsoever in relation thereto. The information included in the presentation and these materials is subject to updating, completion, revision and amendment, and such information may change materially. No person is under any obligation to update or keep current the information contained in the presentation and these materials, and any opinions expressed in relation thereto are subject to change without notice.

The distribution of these materials in other jurisdictions may also be restricted by law, and persons into whose possession these materials come should be aware of and observe any such restrictions.

This presentation includes forward-looking statements that reflect the company's intentions, beliefs or current expectations. Forward looking statements involve all matters that are not historical fact. Such statements are made on the basis of assumptions and expectations that the Company currently believes are reasonable, but could prove to be wrong. Such forward looking statements are subject to risks, uncertainties and assumptions and other factors that could cause the Company's actual results of operations, financial condition, liquidity, performance, prospects or opportunities, as well as those of the markets it serves or intends to serve, to differ materially from those expressed in, or suggested by, these forward-looking statements. Additional factors could cause actual results, performance or achievements to differ materially. The Company and each of its directors, officers, employees and advisors expressly disclaim any obligation or undertaking to release any update of or revisions to any forward-looking statements in the presentation or these materials, and any change in the Company's expectations or any change in the events, conditions or circumstances on which these forward-looking statements are based as required by applicable law or regulation.

The resources referred to in this presentation were announced on 28 September, 2015 (PEL 37) and 11 September, 2018 (PEL 87).

The estimated quantities of petroleum that may potentially be recovered by the application of a future development project(s) relate to undiscovered accumulations. These estimates have both an associated risk of discovery and a risk of development. Further exploration appraisal and evaluation is required to determine the existence of a significant quantity of potentially moveable hydrocarbons. The company confirms that it is not aware of any new information or data that, in its opinion, materially affects the information included in the relevant market announcement and that all the material assumptions and technical parameters underpinning the estimates in the relevant market announcement continue to apply and have not materially changed.

By accepting any copy of the materials presented, you agree to be bound by the foregoing limitations.

Statements made in this presentation on information compiled by Mr John Begg, BSc, MAAPG, MPESA, Chief Executive Officer of Pancontinental Oil & Gas NL. Mr Begg has the relevant degree in geology and has been practising petroleum geology for more than 30 years. Mr Begg is the Executive Director of Pancontinental Oil & Gas NL and has consented in writing to the inclusion of the information stated in the form and context in which it appears.

❖ Key Statistics

➤ Issued Capital	5.26 billion
➤ Options	567 million
➤ Share Price	\$0.009
➤ Market cap	\$47.3 million
➤ Cash	\$7.8 million
➤ Convertible Notes*	\$1.6 million

*Exercisable @ \$0.008

❖ Board

➤ David Kennedy	Chairman
➤ John Begg	CEO (Exec Dir)
➤ Barry Rushworth	(Africa)
➤ Ernie Myers	
➤ Marie Malaxos	
➤ Vesna Petrovic	(Exec Dir & Coy Sec)

❖ Current major activities

- Drilling the Cormorant-1 in PEL 37 Namibia, PCL free carried with 20%.
- Preparing to farmout giant oil potential of PEL 87 Namibia, PCL Operator and 75%.



The Ocean Rig Poseidon – now drilling Cormorant-1

- ❖ Namibia at the forefront
- ❖ Focus on modest entry cost, conventional reservoirs with exposure to large resources
- ❖ Re emergence of African asset portfolio



❖ What we promised:

- Good quality, high impact, multiple, funded drill programs
- To use our proven skills to leverage and create JVs with industry partners that mainly fund the activity.

**A\$31 Million derived from industry sources
vs
A\$6 million from shareholders**

❖ Our delivery:

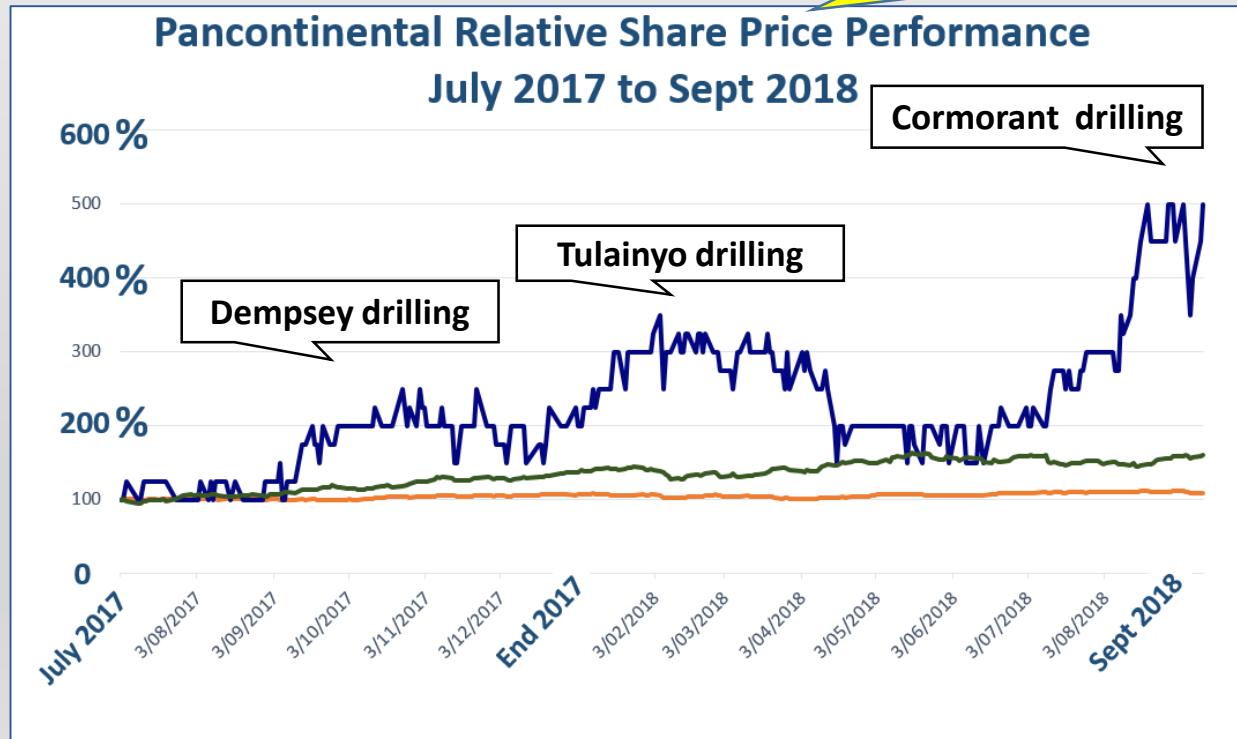
PCL share Price

Vs

ASX 200 Index

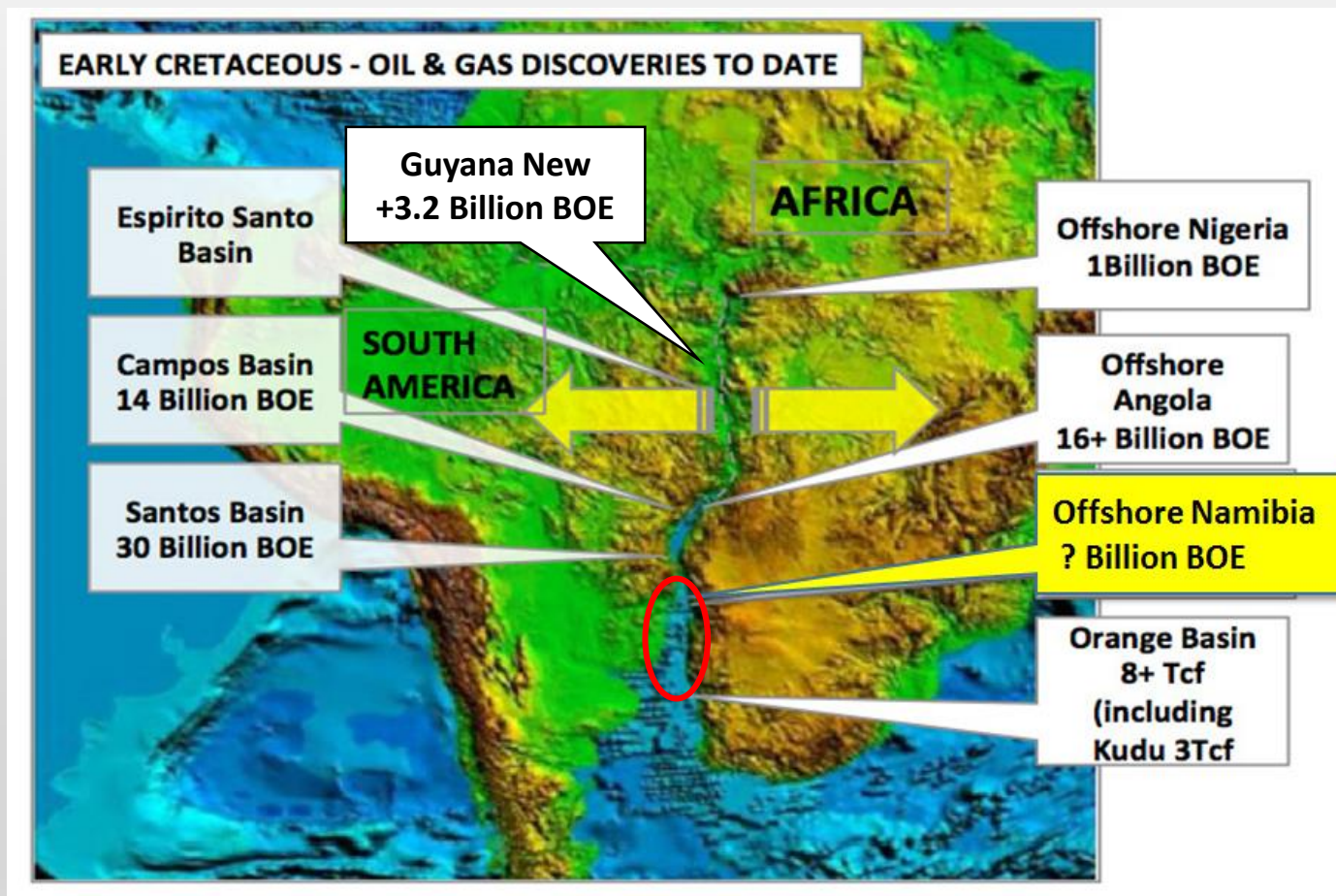
Vs

Oil Price

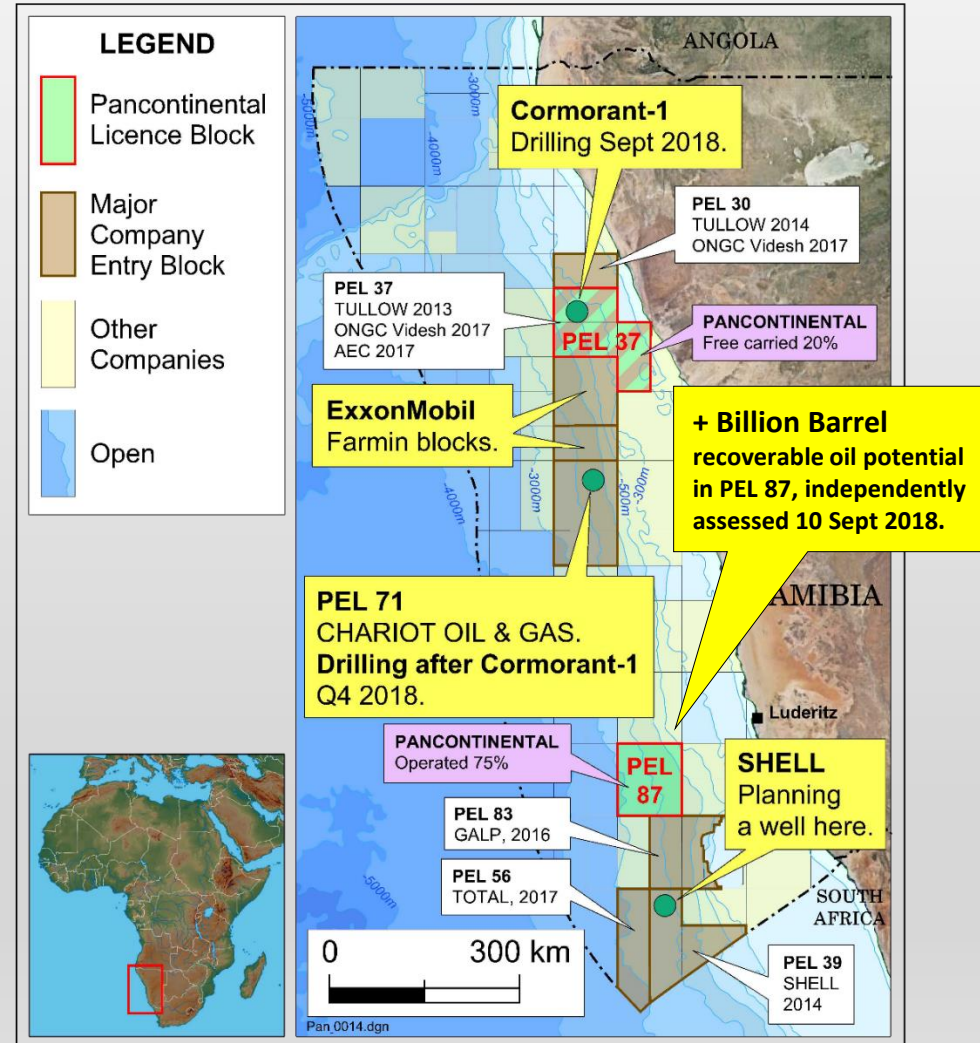


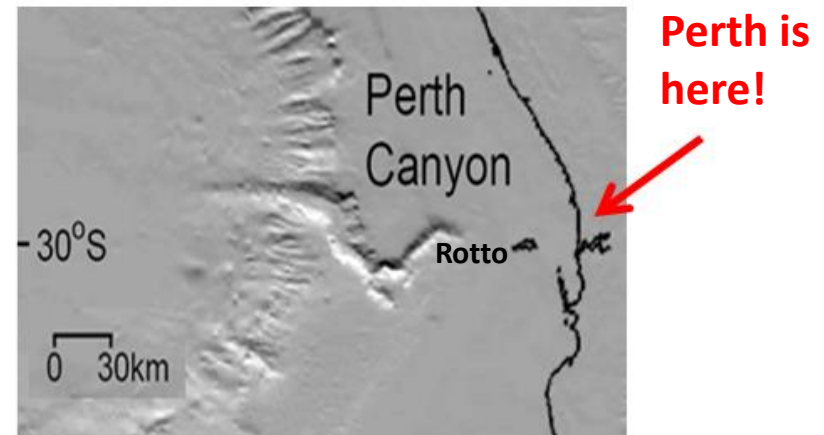
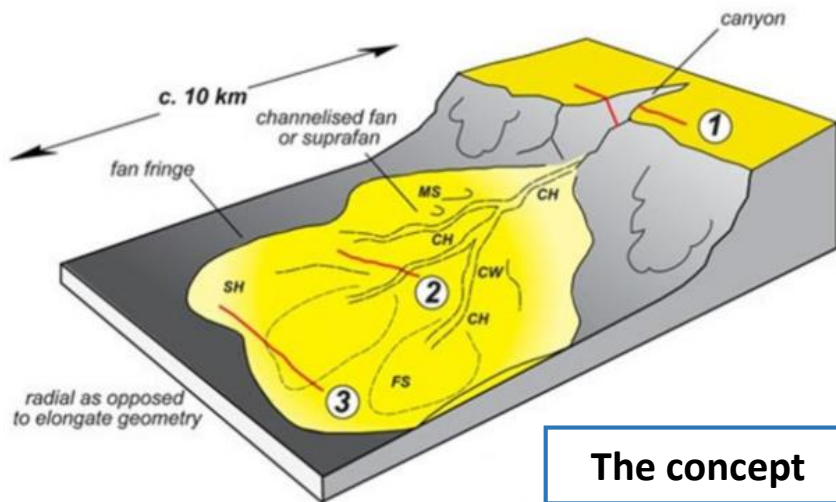
Namibia and West Africa - the big picture

- ❖ Stable fiscal and regulatory regimes.
- ❖ Traps capable of hosting giant-scale oil.
- ❖ Potential for high quality, high flow rate reservoirs.

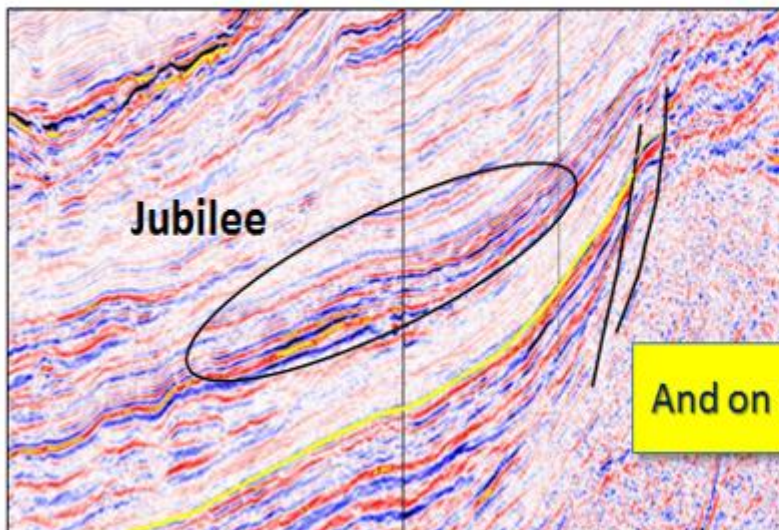


- ❖ Huge potential oil resource numbers in both PCL projects.
- ❖ Major Company entries growing.
 - Tullow
 - GALP
 - SHELL
 - Total
 - ONGC Videsh and ;
 - ExxonMobil
- ❖ Cormorant-1 drilling with PCL 20%.
 - A potential breakthrough well.
- ❖ Other companies drilling in 2018 and expected in 2019.
 - Chariot taking the rig after Cormorant.



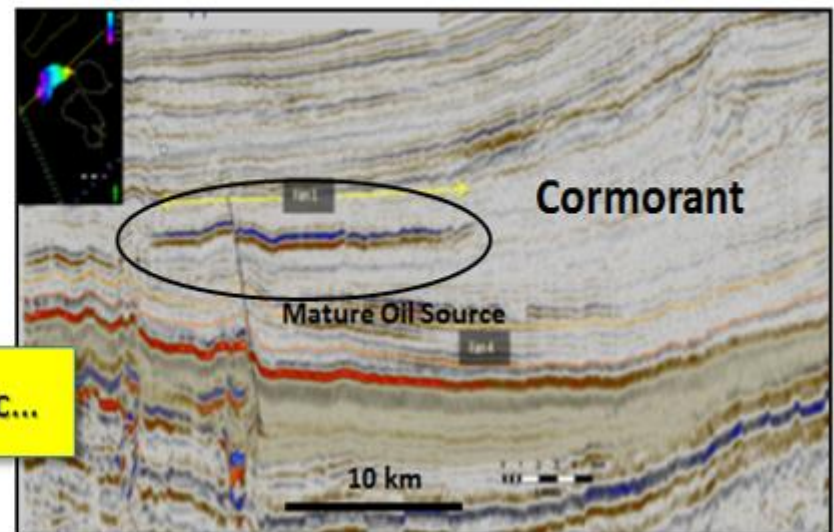


Jubilee A Large Submarine Fan Field in Ghana



And on seismic...

The Cormorant Submarine Fan Prospect

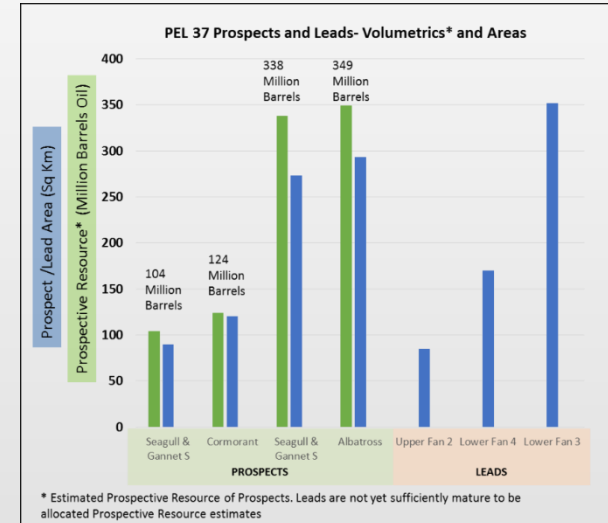
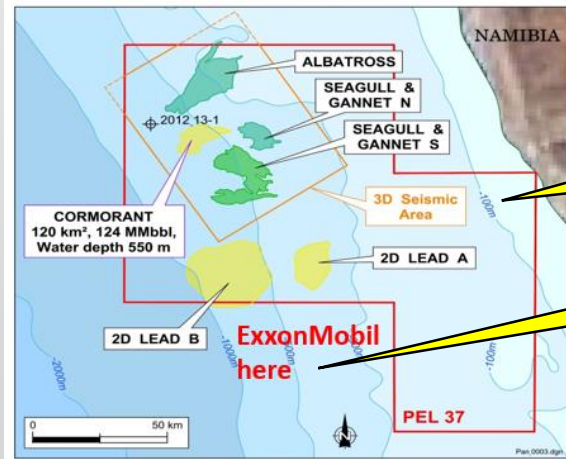
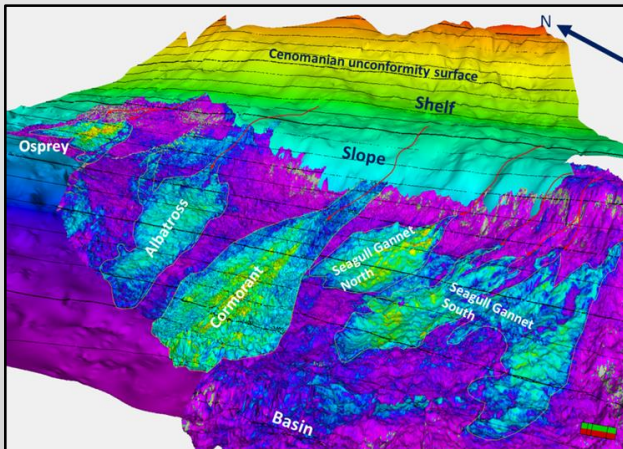




PANCONTINENTAL

Cormorant-1 is Testing one of a Big Cluster

- ❖ Wood Mackenzie rank Cormorant -1 as one of the most watched wells in the world this year.
- ❖ PEL 37 hosts multiple, large, fan bodies in front of a Cretaceous Age paleo shelf.
- ❖ PEL 37 is the prime block in the Walvis Basin.
- ❖ There are other large Leads yet to be converted to drillable prospects



Cumulative Best Estimate recoverable resources of 915 MMbbls

ExxonMobil recently farmed in right next door.

*** Cautionary Statement The resources referred to above were announced on 28 September 2015.**

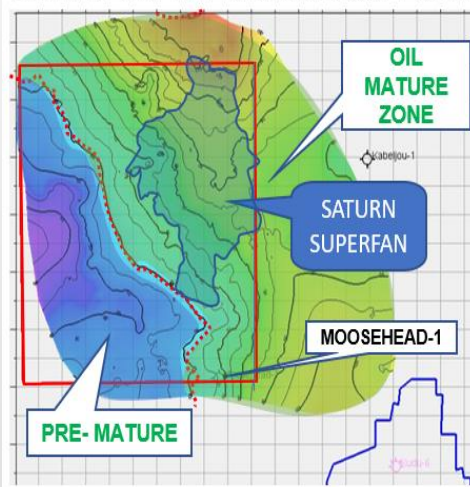
The estimated quantities of petroleum that may potentially be recovered by the application of a future development project(s) relate to undiscovered accumulations. These estimates have both an associated risk of discovery and a risk of development. Further exploration appraisal and evaluation is required to determine the existence of a significant quantity of potentially moveable hydrocarbons.

The company confirms that it is not aware of any new information or data that, in its opinion, materially affects the information included in the relevant market announcement and that all the material assumptions and technical parameters underpinning the estimates in the relevant market announcement continue to apply and have not materially changed.

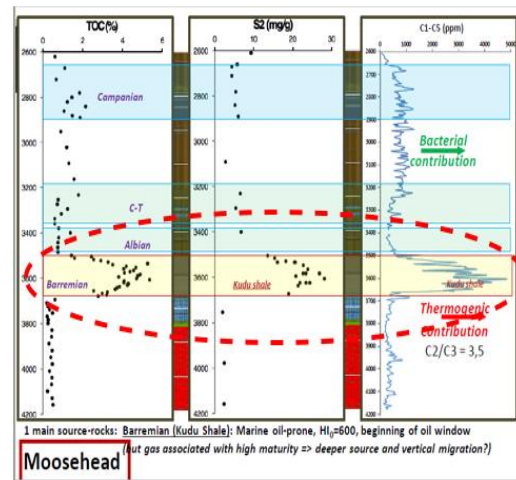
In PEL 87 the Same but Different!

- ❖ Great quality, Early Cretaceous, mature oil source rocks.
- ❖ Traps capable of hosting giant-scale* recoverable oil
- ❖ Potential for high quality, high flow rate reservoirs.

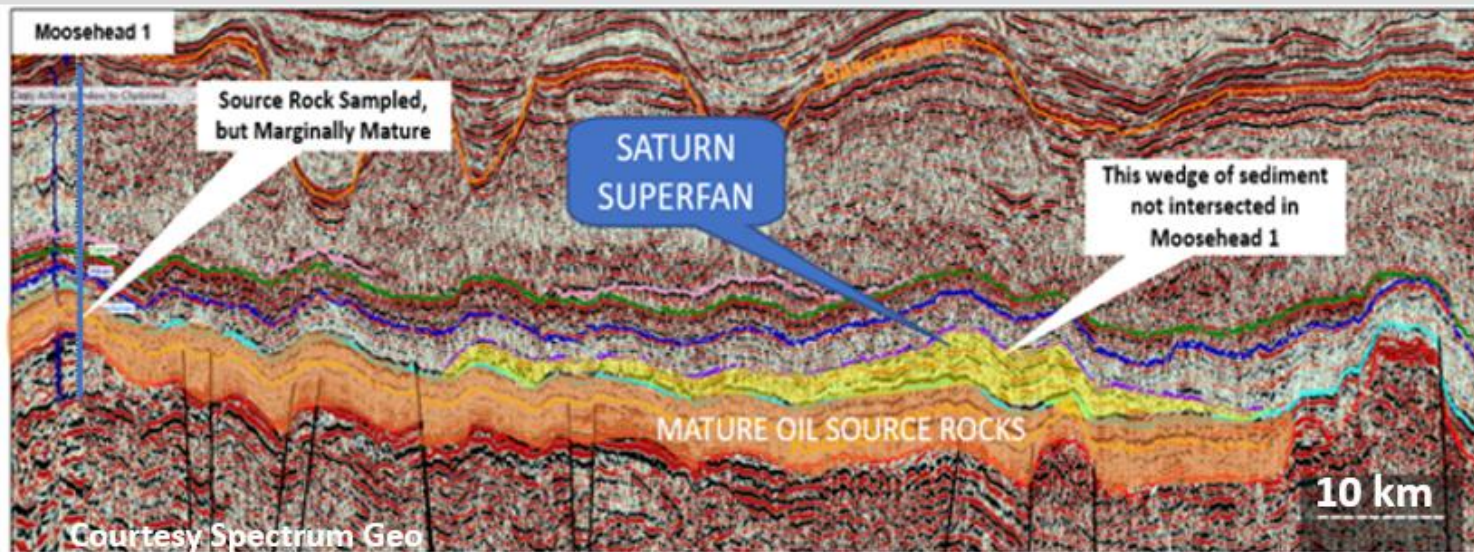
HIGH QUALITY MATURE OIL SOURCE UNDERLIES THE SATURN SUPERFAN



HIGH QUALITY OIL SOURCE ROCKS IN MOOSEHEAD-1

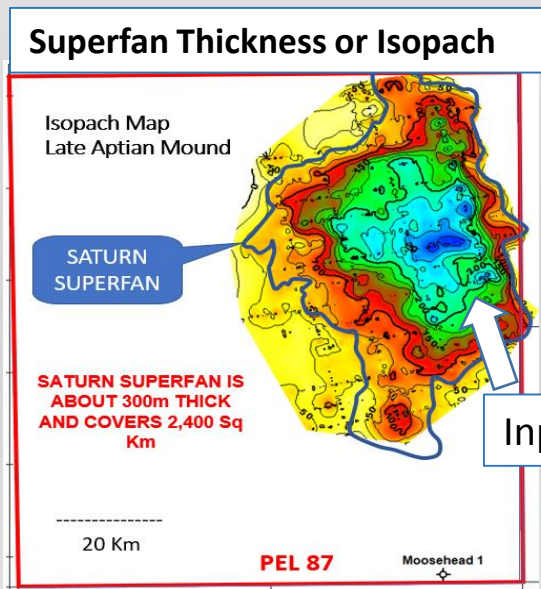


- ❖ **The Saturn Superfan rests directly on the source rocks.**

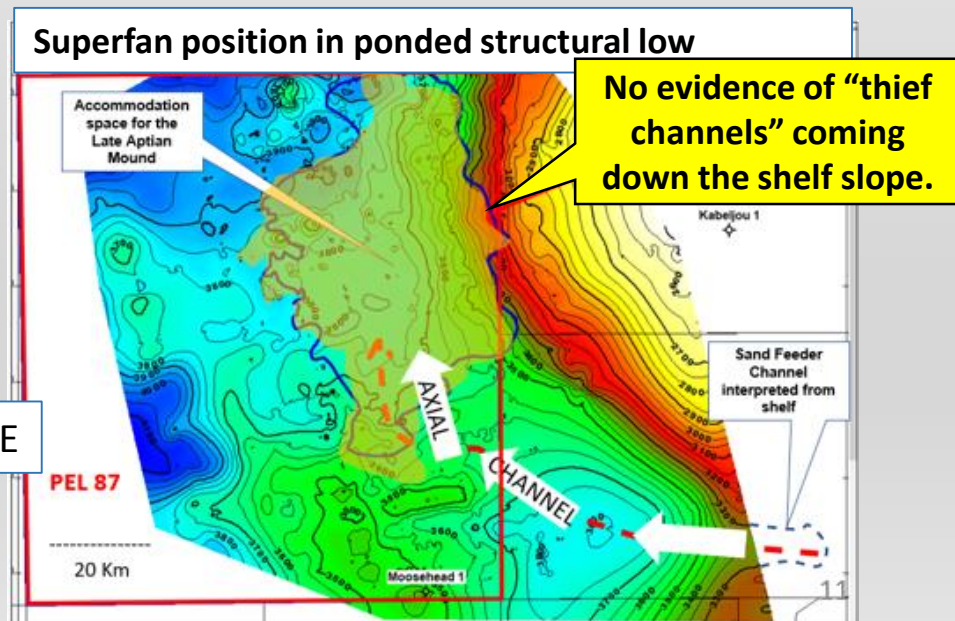


What is the Saturn Superfan in PEL 87?

- ❖ It is a vast, 2,400km² Turbidite Fan complex of Aptian Age that based on Pancontinental's interpretation of over 2,800 line km grid of good quality 2D seismic is encased in sealing shales.
- ❖ It was deposited originally in deep water into a regional low on the Intra-Aptian Unconformity and directly over the mapped oil source section.
- ❖ Mapping supports deposition along the axis of the low, supplied via a major canyon to the SE.
- ❖ It is virtually entirely located within PEL 87 and has not previously been recognised by industry.
- ❖ The Superfan and associated Leads will require further evaluation by 3D seismic to mature to Prospect status and ultimately drilling to prove whether oil is trapped.

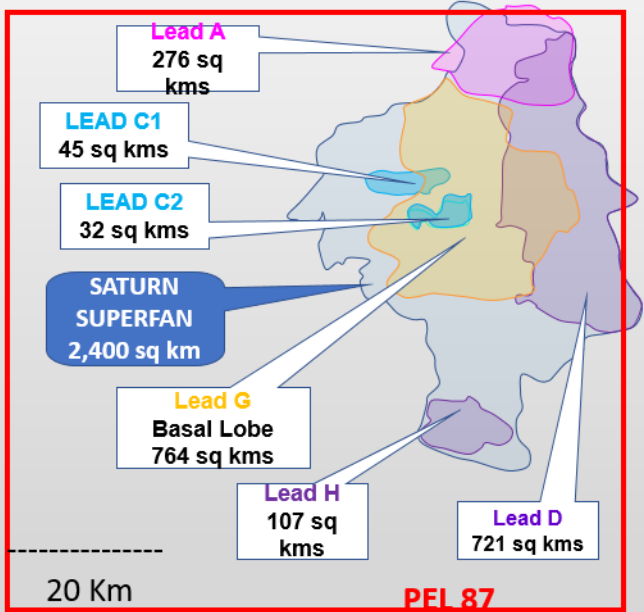


Input from SE





❖ **Gross Cumulative Best Estimate Prospective Resources of 959 MMbbls and (Main Leads) and 1.3 billion Barrels (Whole Fan).**



* A giant field is categorised as having 500 MMBBL recoverable.
 ** The overall Saturn Superfan incorporates all of the other Leads, but with different risk inputs

*** Cautionary Statement The resources referred to above were announced on 11 September 2018.**
 The estimated quantities of petroleum that may potentially be recovered by the application of a future development project(s) relate to undiscovered accumulations. These estimates have both an associated risk of discovery and a risk of development. Further exploration appraisal and evaluation is required to determine the existence of a significant quantity of potentially moveable hydrocarbons.

INDIVIDUAL LEADS

MAIN LEADS – RECOVERABLE OIL POTENTIAL									
Lead	Gross Prospective Resources				Pancontinental Net Entitlement ¹				GPOS
	MMbbls				MMbbls				%
	P90	P50*	Mean	P10	P90	P50	Mean	P10	
Lead A	39	152	224	549	28	108	160	391	11%
Lead C1	24	73	102	213	17	52	73	152	19%
Lead D	57	345	829	2026	41	246	591	1444	10%
Lead G	75	349	603	1433	53	249	430	1021	7%
Lead H	6	40	95	234	4	29	68	167	7%
TOTAL					143	684	1322	3175	

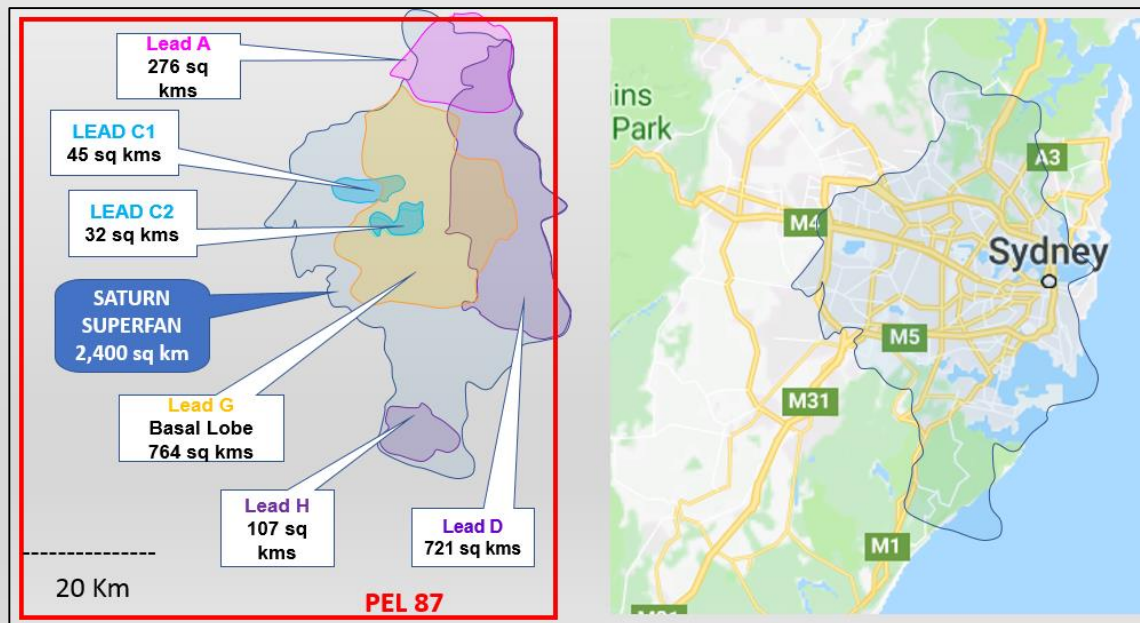
*P50 represents Best Estimate Prospective Resources

SATURN SUPERFAN AS A SINGLE OIL TRAP

SATURN SUPERFAN – RECOVERABLE OIL POTENTIAL									
Lead	Gross Prospective Resources				Pancontinental Net Entitlement ¹				GPoS*
	MMbbls				MMbbls				%
Saturn**	P90	P50*	Mean	P10	P90	P50	Mean	P10	
	245	1329	2830	7820	175	947	2016	5572	5%

The company confirms that it is not aware of any new information or data that, in its opinion, materially affects the information included in the relevant market announcement and that all the material assumptions and technical parameters underpinning the estimates in the relevant market announcement continue to apply and have not materially changed.

- ❖ Cashed up.
- ❖ Positioned in conventional oil plays with giant-scale recoverable potential.
- ❖ Participating at no cost with 20% in one of the most watched oil industry wells of 2018.
- ❖ Holding 75% in a block with a huge oil play that is expected to attract the interest of Major Oil companies.



Credit is paid here to the original Pancon team and still Directors for their vision and persistence in the pursuit of big African plays. Guided by Dave Kennedy, inspired by Barry Rushworth and ably supported by Ernie Myers and Vesna Petrovic.

Scale Comparison of the Saturn Superfan Lead Cluster in PEL 87 vs City of Sydney.



PANCONTINENTAL OIL & GAS NL

**Head Office - Level 1,10 Ord Street, Perth,
Western Australia 6005**

**Postal Address - PO Box 1154, Perth Business
Centre, Western Australia 6872**

Telephone +61 8 6363 7090

Facsimile +61 8 6363 7099

ACN 003 029 543

www.pancon.com.au

info@pancon.com.au