
EXPLORATION UPDATE – SPRINGFIELD COPPER-GOLD PROJECT

DRILLING AT HOMER PROSPECT INTERSECTS MULTIPLE ZONES OF ANOMALOUS COPPER AND GOLD

Key Points:

- **Zone of anomalous copper mineralisation intersected on northern contact of Homer Prospect, with a peak interval of 2m @ 0.22% Cu**
 - **Broad zone of alteration with anomalous copper and gold intersected on southern contact of Homer prospect – results include 8m @ 1.0g/t Au and 16m @ 180ppm Cu**
 - **Broad 1.1km long zone of near-surface copper anomalism identified on southern contact**
 - **First-pass reconnaissance drilling underway at the *Abraham, Skinner and Monty* geochemical anomalies**
-

Talisman Mining Ltd (ASX: **TLM**) is pleased to provide an update on the first phase of reconnaissance drilling at its 100%-owned **Springfield Copper-Gold Project**, located 150km north-east of Meekatharra in Western Australia (see *Figure 1*).

The first phase of drilling has been completed at the **Homer Prospect**, which is located 5km east and directly along strike from the DeGrussa VMS Copper-Gold Project (7.13 million tonnes @ 5.2% copper and 1.9g/t gold). The Homer prospect is interpreted to contain the same volcanic formation that hosts the three known lenses of copper-gold mineralisation at DeGrussa.

Talisman is encouraged by the results received to date, given the wide-spaced reconnaissance nature of the initial drilling program. The results have provided a significantly enhanced understanding of the prospective geology of the Springfield Project, laying the foundations for the next phase of reconnaissance and more targeted follow-up drilling.

The initial reconnaissance drilling program completed at the **Homer Prospect** consisted of 51 reverse circulation (RC) drill holes for 4,572 metres, drilled on three sections spaced approximately 1.1km apart (see *Figure 2*). Assay results have now been returned for the majority of the holes.

The important results from this initial phase of drilling at the Springfield Project include:

- Identification of a zone of **anomalous copper mineralisation** (drill hole SPRC044) on the northern contact of the **Homer Prospect** with a peak interval of **2 metres @ 0.22% Cu** (see *Figure 3a*). This result now identifies the northern contact as a high priority for follow-up exploration at Homer as well as the previously targeted southern contact;



- A broad zone of alteration with associated anomalous gold and copper values was intersected in drill hole SPRC007 on the southern contact of the **Homer Prospect**. Results returned include **8 metres @ 1.0g/t Au** (including **2m @ 1.5g/t**) within a broader anomalous copper interval of **16 metres @ 180ppm Cu**. This highly anomalous and altered zone is located on the contact between a mafic volcanic rock unit and an overlying volcano-sedimentary rock sequence (see Figure 3b);
- A **broad zone of near-surface copper anomalism** (>400ppm Cu) with associated patchy gold values (>40ppb Au) has been identified in drilling for at least 1.1km along the southern contact of the Homer Prospect (see Figure 2). This zone potentially represents near-surface dispersion from a deeper bedrock source; and
- Identification of a **strong intersection of copper anomalism in drill hole SPRC045** from within an internal volcano-sedimentary unit within the mafic volcanic package. Assay results returned a broad intersection of **40 metres @ 500ppm Cu** from 4 metres (see Figure 3b).

First-pass reconnaissance drill testing is continuing at the **Abraham, Skinner and Monty** geochemical anomalies, while follow-up programs of down-hole electromagnetic surveys (DHEM) and surface moving loop electromagnetic surveys (MLEM) are ongoing.

Talisman will report remaining assay results from the **Homer** initial reconnaissance drilling program when received and assessed. Similarly, results from the **Abraham, Skinner and Monty Prospects** reconnaissance drilling program will be also be reported in due course.

"We are pleased with the progress and initial results of exploration at Springfield, with the first-pass reconnaissance phase of drilling now complete at our first priority anomaly and currently in progress at the next three priority target areas," said Talisman's Managing Director, Mr Gary Lethridge.

"The results received to date from the Homer Prospect – which is the northernmost target area, directly along strike to the east of the DeGrussa Project – provide further encouragement for our view that this area provides an excellent opportunity for the potential discovery of further VMS copper-gold deposits."

"In addition to numerous highly anomalous copper and gold intersections, the results have provided our geological team with a much more advanced understanding of the geology and structures in this area and may provide specific vectors to target accumulations of primary sulphide mineralisation."

"We are looking forward to the next round of exploration at Homer, which will consist of a combination of further reconnaissance and more targeted follow-up drilling based on these results as well as the results of DHEM and MLEM surveys currently underway," Mr Lethridge added.

Competent Persons' Statement

Information in this ASX release that relates to Exploration Results is based on information compiled by Mr Harry Cornelius, who is a member of the Australasian Institute of Mining and Metallurgy. Mr Harry Cornelius is a full time employee of Talisman Mining Ltd and has sufficient experience which is relevant to the style of mineralisation and types of deposit under consideration and to the activities undertaken to qualify as a Competent Person as defined in the 2004 Edition of the "Australian Code for Reporting of Mineral Resources and Ore Reserves". Mr Harry Cornelius consents to the inclusion in this report of the matters based on information in the form and context in which it appears.

– ENDS –

For further information, please contact:

Gary Lethridge – Managing Director
or
Peter Langworthy – Technical Director
on +61 8 9380 4230

For media inquiries, please contact:

Nicholas Read – Read Corporate
On +61 419 929 046



Figure 1: Springfield Location Plan

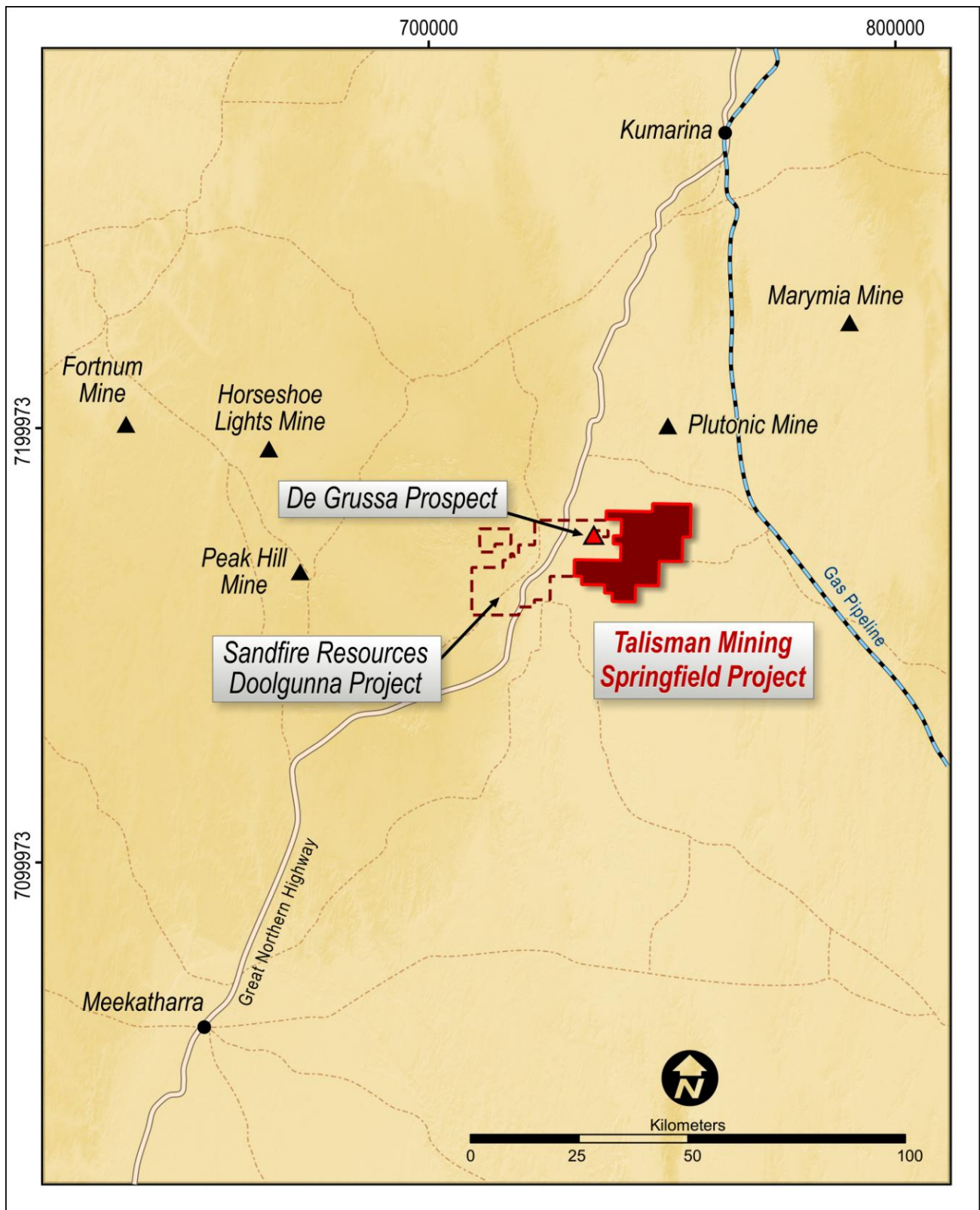




Figure 2: Springfield Reconnaissance Drilling Collar Map – Homer Prospect

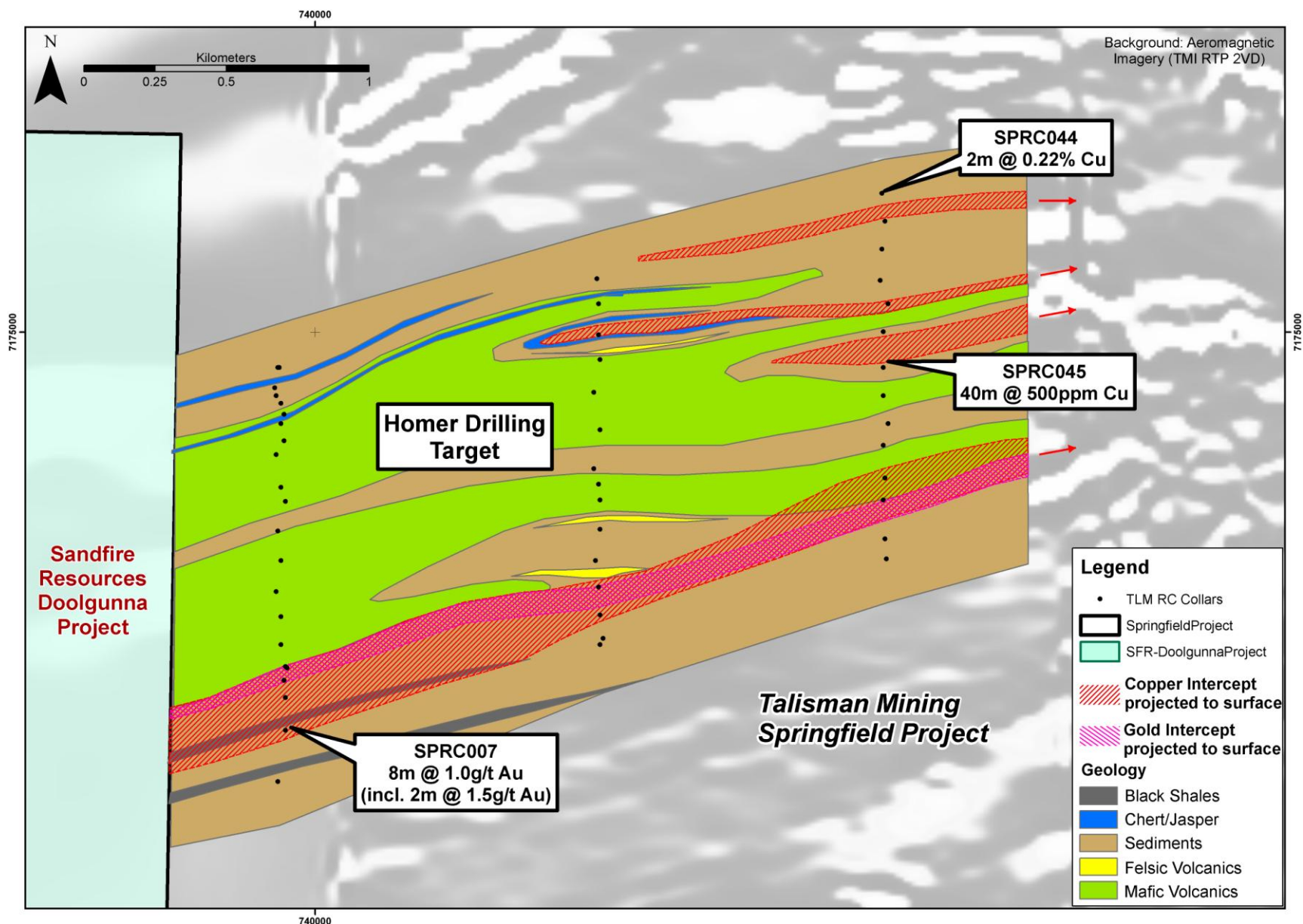




Figure 3: Homer Prospect – Cross Sections of Two Reconnaissance Drill Traverses

