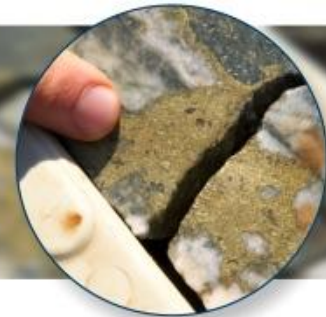




# TALISMAN MINING LIMITED



17 November 2011

## COMPANY SNAPSHOT

### Board of Directors

**Alan Senior**  
Non-Executive Chairman

**Gary Lethridge**  
Managing Director

**Brian Dawes**  
Non-Executive Director

**Karen Gadsby**  
Non-Executive Director

### Contact Details

6 Centro Avenue, Subiaco,  
Western Australia,  
6008  
Australia

**Telephone:** +61 8 9380 4230

**Facsimile:** +61 8 9382 8200

**Email:**  
[info@talismanmining.com.au](mailto:info@talismanmining.com.au)

**Website:**  
[www.talismanmining.com.au](http://www.talismanmining.com.au)

### Capital Structure

**Shares on Issue:**  
131,538,627 (TLM)

**Options on Issue:**  
11,175,000 (Unlisted)

**ASX:** TLM

## ASX Release – Appointment of New Director

Talisman Mining Ltd (ASX: TLM) is pleased to announce that it has strengthened its Board with the appointment of Mr Graeme Cameron as the Company's Technical Director effective 17 November 2011.

Mr Cameron has been employed on a full-time basis with Talisman for the past five months as General Manager Exploration and has been invaluable in enabling the smooth transition of the Company's previous Technical Director, Mr Peter Langworthy, to move to a part-time basis and eventually step down from the Board.

Mr Cameron is a Mineral Exploration Geologist with over twenty two years of Australian and international experience in the mining and mineral exploration industry. He has held Senior Management positions in a number of mining companies with a broad range of responsibilities including such companies as Sons of Gwalia, AngloGold Ashanti and Pacmin Mining Corporation. Most recently Mr Cameron held the position of Technical Director at Falcon Minerals Limited where he was responsible for exploration activities, strategic planning, business development and management of the Company's projects.

Talisman's Chairman, Mr Alan Senior, said that Mr Cameron's extensive exploration experience across a wide range of commodities is providing the Company with invaluable knowledge and experience.

"We are very pleased to have Graeme join the Talisman Board. He has been managing the Company's exploration team for almost five months now and has made an extremely positive contribution to the Company in this time.

ENDS