

ASX ANNOUNCEMENT

1ST MARCH 2013

ASX CODE: TNG

REGISTERED OFFICE

TNG Limited
Level 1, 282 Rokeby Road
Subiaco, Western Australia 6008

T +61 8 9327 0900
F +61 8 9327 0901

W www.tngltd.com.au
E corporate@tngltd.com.au

ABN 12 000 817 023

DIRECTORS

Jianrong Xu Chairman
Paul Burton MD
Neil Biddle
Stuart Crow
Rex Turkington
Wang Zhigang

COMPANY SECRETARY

Simon Robertson

PROJECTS

Mount Peake: Fe-V-Ti
Manbarrum: Zn-Pb-Ag
East Rover: Cu-Au
McArthur: Cu
Mount Hardy: Cu-Au
Sandover: Cu-Au

CONTACT DETAILS

Paul Burton | +61 8 9327 0900
Nicholas Read | +61 419 929 046
Simon Robertson | +61 8 9327 0900

NEW GEOPHYSICAL SURVEY UNDERWAY AT THE MOUNT HARDY COPPER PROJECT

Key Points

- **Induced Polarisation (IP) geophysical survey has commenced at TNG's Mount Hardy Copper Project, NT**
- **Key target areas are the "Mount Hardy prospect" and the "Browns prospect" - both of which have extensive surface copper mineralisation**
- **Field survey and result interpretation should be completed by mid-March**
- **Results will assist future drill targeting**
- **A 2,000-3,000 metre diamond drilling programme is planned for March-April 2013 to test key targets**

Australian resources company TNG Limited (ASX: TNG) is pleased to advise that an Induced Polarisation (IP) geophysical survey has commenced over key targets at its 100%-owned **Mount Hardy Copper Project** (Figure 1) in the Northern Territory.

The survey will cover two key areas - the Mount Hardy and Browns prospects (Figure 2), where previous TNG fieldwork has outlined extensive outcropping copper mineralisation at surface.

The two prospects will be tested with a high powered system comprising three double-offset Dipole-Dipole Induced Polarisation and Resistivity Array surveys. The survey will have transmitters and receivers spaced at 50 metre intervals, while the offset lines are at 100 metres, with lines 800 metres long. The fieldwork for this survey is expected to be completed by mid-March.

IP surveys measure the electrical conductivity and resistivity of the rock sequence under the receivers after a current is passed into the ground. IP surveys can be used to map areas of conductivity that relate to sulphide accumulations, particularly broad zones of disseminated sulphides that may represent copper or base metal mineralisation.

Both the Mount Hardy and the Browns prospects have significant surface copper mineralisation outlined from both soil sampling and rock chip sampling undertaken over the last several months.

The Mount Hardy prospect has a surface copper-in-soil anomaly (at above 200ppm Cu determined by portable XRF analyser) over a 550 x 160 metre area. 17 surface rock chip samples (analysed by ICP technique) exceeded 1% Cu, with a maximum value of 6.84% Cu. (See ASX release on 27 September 2012 and 10 October 2012).

The Browns prospect has mineralisation over 150m strike length, and contains 12 rock chip samples of greater than 1% Cu, as well as supporting lead and zinc values. (See ASX release on 27 September 2012 and 10 October 2012).

This survey, together with the gravity survey which has now been completed (see *ASX release on 4 February 2013*), and the previously-conducted electromagnetic surveying (HELITEM, ground EM and down hole EM), will assist TNG to gain an understanding of the geological controls on mineralisation in the Mount Hardy project area. Results and interpretation of this survey will assist in defining drill targets to be tested with a diamond drilling programme which is expected to commence in March, following departmental programme approval.

Managing Director of TNG, Mr Paul Burton, said the Company was building an important database of information on the Mount Hardy Project, which is emerging as a key exploration target.

“Our exploration initiatives at Mount Hardy continue to confirm the region’s prospectivity for copper mineralisation and this survey will provide further key data to help us refine targets for the upcoming drilling programme,” he said.

Paul E Burton
Managing Director

Enquiries:

Paul E Burton,
Managing Director + 61 (0) 8 9327 0900

Nicholas Read
Read Corporate + 61 (0) 8 9388 1474

Competent Person Statement

The information in this report that relates to Exploration Results and Exploration Targets are based on information compiled by Exploration Manager Mr Kim Grey B.Sc. and M. Econ. Geol. Mr Grey is also a member of the Australian Institute of Geoscientists and a full time employee of TNG Limited. Mr Grey has sufficient experience relevant to the style of mineralisation and type of deposit under consideration and to the activity which he is undertaking to qualify as a Competent Person as defined in the 2004 Edition of the ‘Australasian Code for Reporting of Exploration Results, Mineral Resources and Ore Reserves’. Mr Grey consents to the inclusion in the report of the matters based on his information in the form and context in which it appear.

Forward-Looking Statements

This announcement has been prepared by TNG Ltd. This announcement is in summary form and does not purport to be all inclusive or complete. Recipients should conduct their own investigations and perform their own analysis in order to satisfy themselves as to the accuracy and completeness of the information, statements and opinions contained.

This is for information purposes only. Neither this nor the information contained in it constitutes an offer, invitation, solicitation or recommendation in relation to the purchase or sale of TNG Ltd shares in any jurisdiction.

This does not constitute investment advice and has been prepared without taking into account the recipient's investment objectives, financial circumstances or particular needs and the opinions and recommendations in this presentation are not intended to represent recommendations of particular investments to particular persons. Recipients should seek professional advice when deciding if an investment is appropriate. All securities transactions involve risks, which include (among others) the risk of adverse or unanticipated market, financial or political developments.

To the fullest extent permitted by law, TNG Ltd, its officers, employees, agents and advisers do not make any representation or warranty, express or implied, as to the currency, accuracy, reliability or completeness of any information, statements, opinions, estimates, forecasts or other representations contained in this announcement. No responsibility for any errors or omissions from this arising out of negligence or otherwise is accepted.

This may include forward looking statements. Forward looking statements are only predictions and are subject to risks, uncertainties and assumptions which are outside the control of TNG Ltd. Actual values, results or events may be materially different to those expressed or implied.

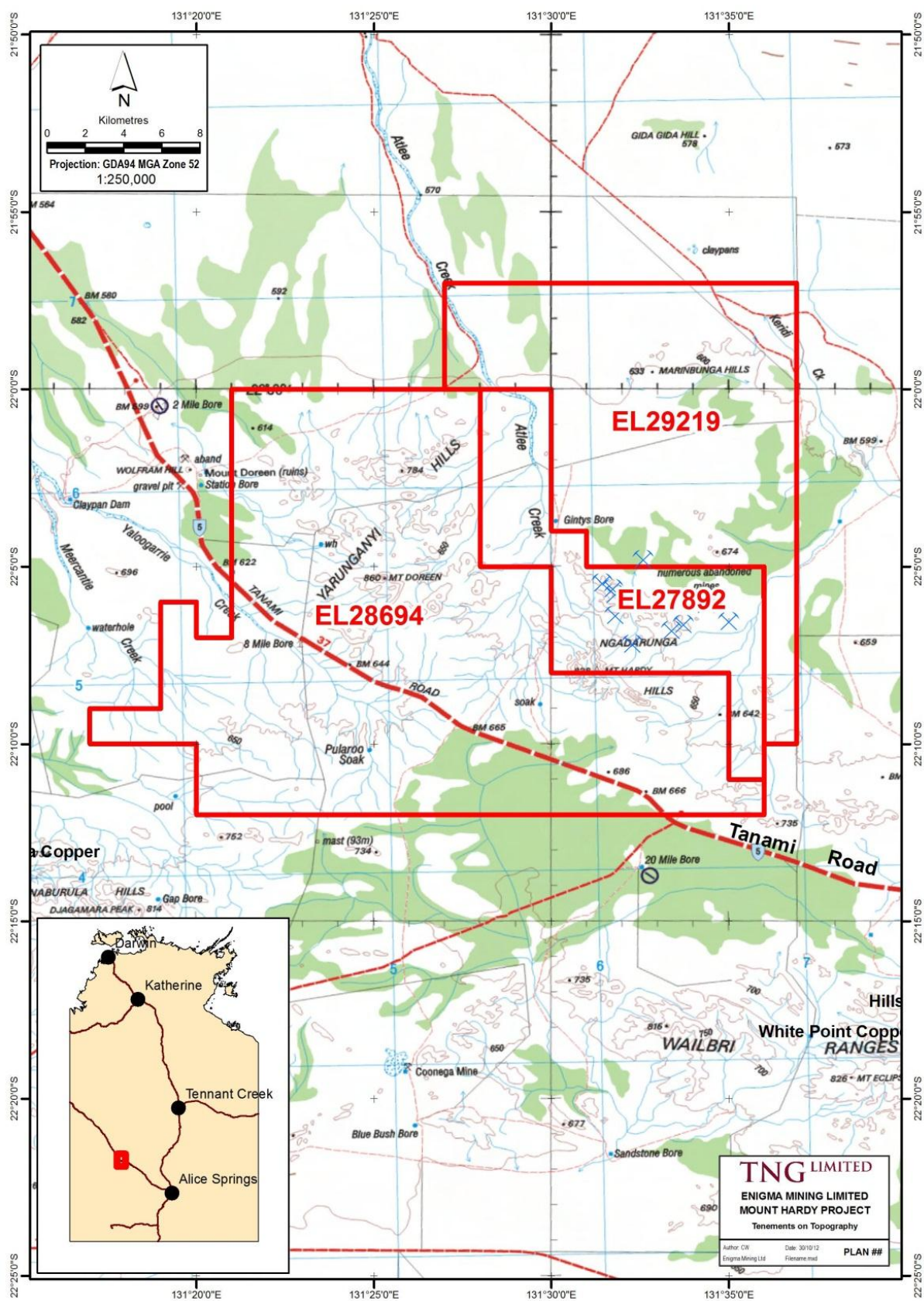


Figure 1: Location and tenure for TNG's Mount Hardy Project, Northern Territory

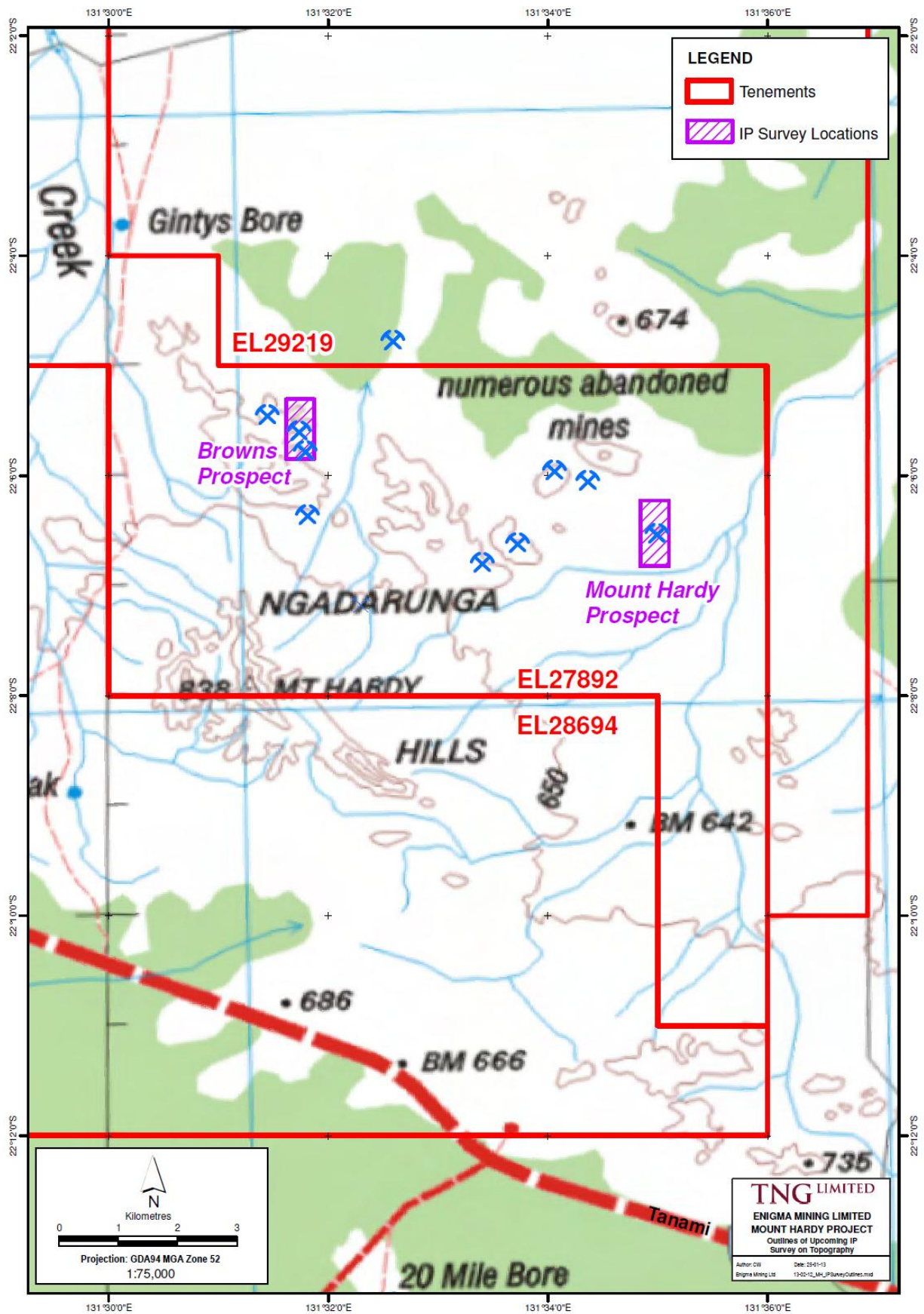


Figure 2: Location of the IP geophysical survey areas at the Mount Hardy Project