



OFFSHORE NAMIBIA

PEL 87 OPPORTUNITY

OUTLINE

- LOCATION – ORANGE BASIN
- ACTIVE FUTURE DRILLING - ON TREND
- DATA - 3D OVER SATURN LEAD REQUIRED
- SOURCE - PROVEN OIL PRONE
- CHARGE - CONFIDENTLY MODELLED
- RESERVOIR - NEWLY IDENTIFIED GIANT APTIAN FAN COMPLEX
- SEAL - PROVEN IN OFFSET WELLS
- RESOURCES - MULTI-BILLION Bbl POTENTIAL
- CONTRACT - RECENTLY AWARDED, VERY FAVOURABLE TERMS
- FARMOUT AVAILABLE FOR ~5000 sq.km 3D & DRILLING

DISCLAIMER



These materials are strictly confidential and are being supplied to you solely for your information and should not be reproduced in any form, redistributed or passed on, directly or indirectly, to any other person or published, in whole or part, by any medium or for any purpose. Failure to comply this restriction may constitute a violation of applicable securities laws.

These materials do not constitute or form part of any offer or invitation to sell or issue, or any solicitation of any offer to purchase or subscribe for, or any offer to underwrite or otherwise acquire any securities, nor shall any part of these materials or fact of their distribution or communication form the basis of, or be relied on in connection with, any contract, commitment or investment decision whatsoever in relation thereto. The information included in the presentation and these materials is subject to updating, completion, revision and amendment, and such information may change materially. No person is under any obligation to update or keep current the information contained in the presentation and these materials, and any opinions expressed in relation thereto are subject to change without notice.

The distribution of these materials in other jurisdictions may also be restricted by law, and persons into whose possession these materials come should be aware of and observe any such restrictions.

This presentation includes forward-looking statements that reflect the company's intentions, beliefs or current expectations. Forward looking statements involve all matters that are not historical fact. Such statements are made on the basis of assumptions and expectations that the Company currently believes are reasonable, but could prove to be wrong. Such forward looking statements are subject to risks, uncertainties and assumptions and other factors that could cause the Company's actual results of operations, financial condition, liquidity, performance, prospects or opportunities, as well as those of the markets it serves or intends to serve, to differ materially from those expressed in, or suggested by, these forward-looking statements. Additional factors could cause actual results, performance or achievements to differ materially. The Company and each of its directors, officers, employees and advisors expressly disclaim any obligation or undertaking to release any update of or revisions to any forward-looking statements in the presentation or these materials, and any change in the Company's expectations or any change in the events, conditions or circumstances on which these forward-looking statements are based as required by applicable law or regulation.

The resources referred to in this presentation were announced on 11 September 2018 (PEL 87).

The estimated quantities of petroleum that may potentially be recovered by the application of a future development project(s) relate to undiscovered accumulations. These estimates have both an associated risk of discovery and a risk of development. Further exploration appraisal and evaluation is required to determine the existence of a significant quantity of potentially moveable hydrocarbons.

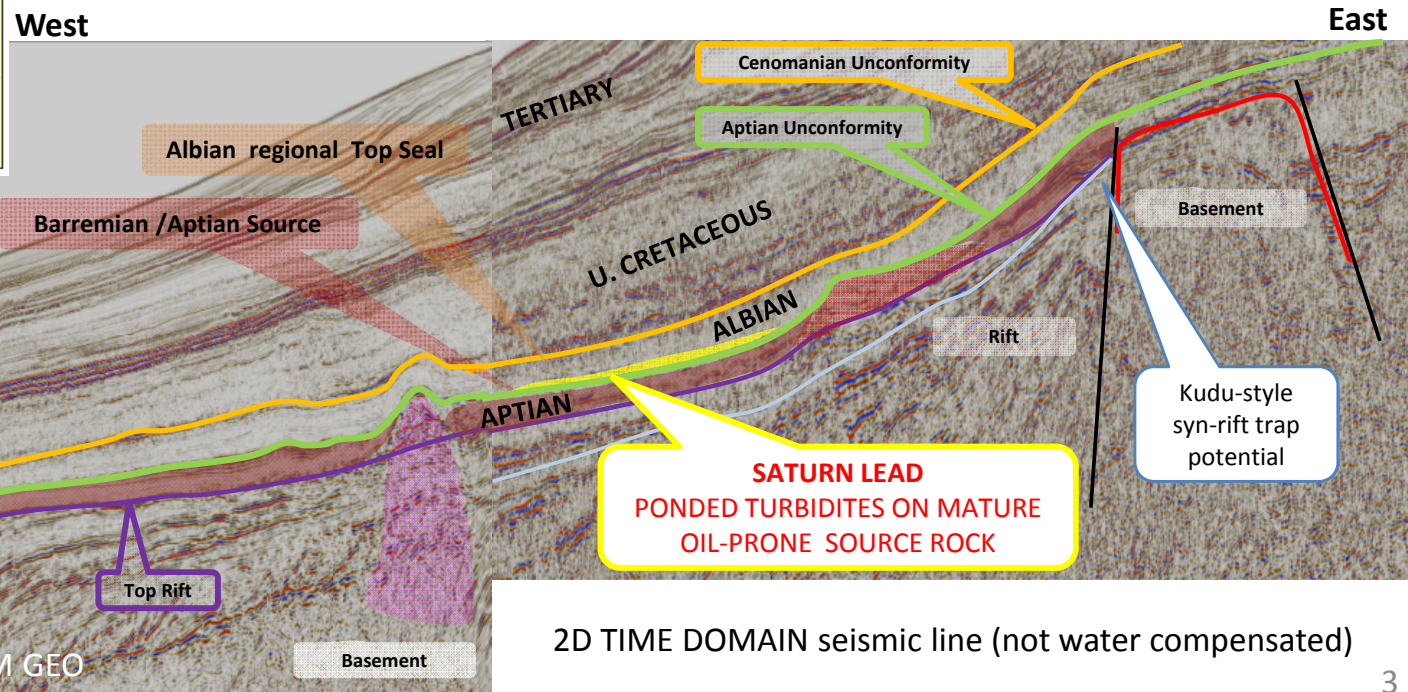
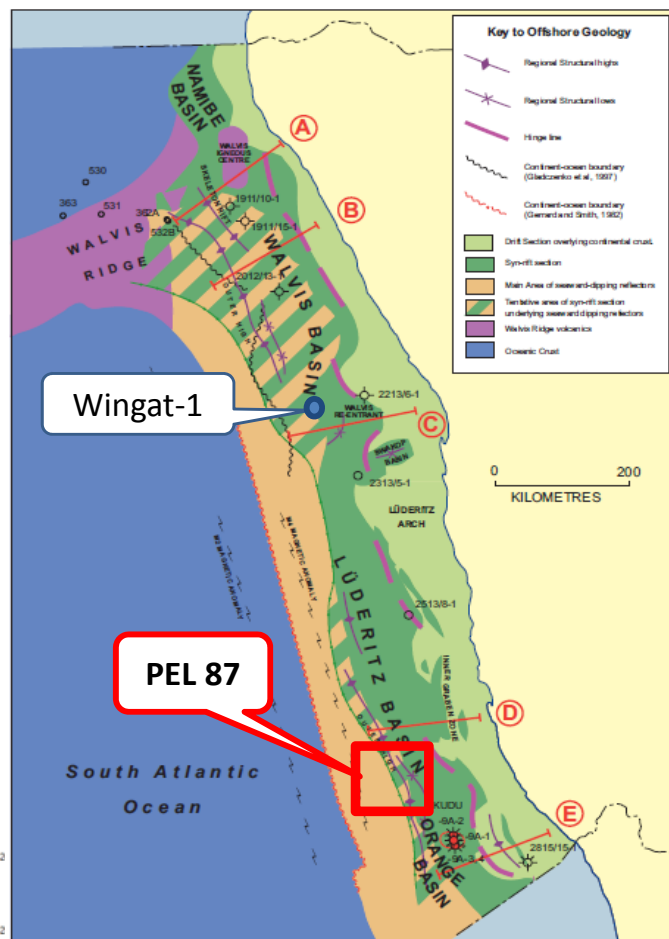
The company confirms that it is not aware of any new information or data that, in its opinion, materially affects the information included in the relevant market announcement and that all the material assumptions and technical parameters underpinning the estimates in the relevant market announcement continue to apply and have not materially changed.

By accepting any copy of the materials presented, you agree to be bound by the foregoing limitations.

Statements made in this presentation on information compiled by Mr Barry Rushworth, Director of Pancontinental Oil & Gas NL. Mr Rushworth has the relevant degree in geology and has been practising petroleum geology for more than 35 years. Mr Rushworth has consented in writing to the inclusion of the information stated in the form and context in which it appears.

PEL 87 - REGIONAL SETTING

- Located offshore the Orange Basin
- 100km NW of the Kudu syn-rift gas accumulation
- Offset wells prove oil prone early post-rift source
- Seismic mapping reveals Albo-Aptian fan overlying mature source rock
 - New play for Namibian basin (“Saturn”)
 - Oil recovered from Wingat-1 in analogous setting



COURTESY OF SPECTRUM GEO

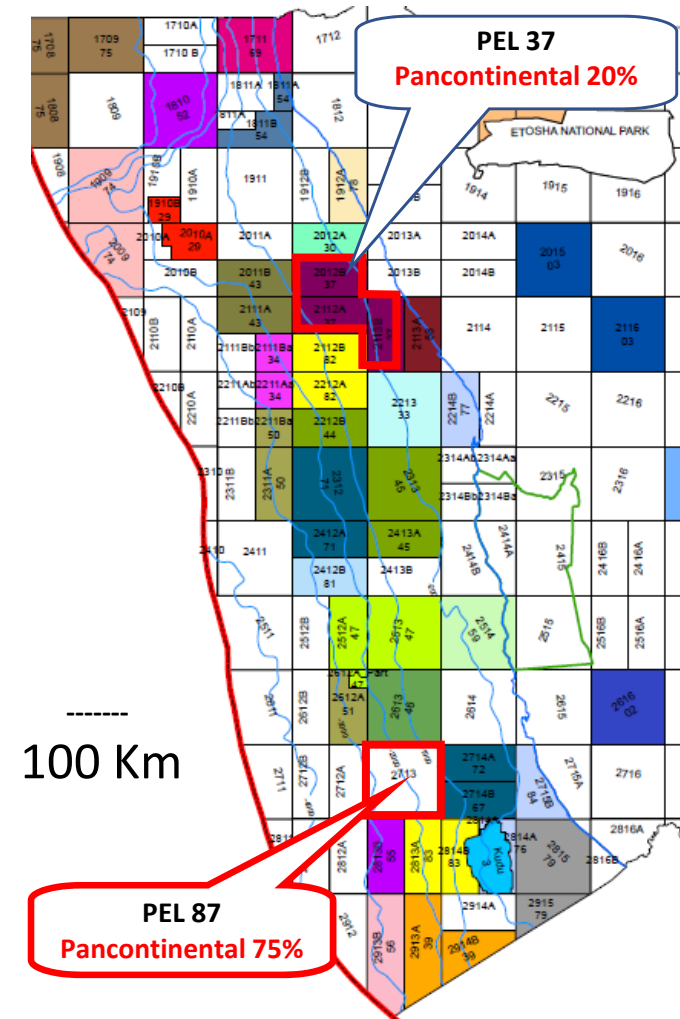
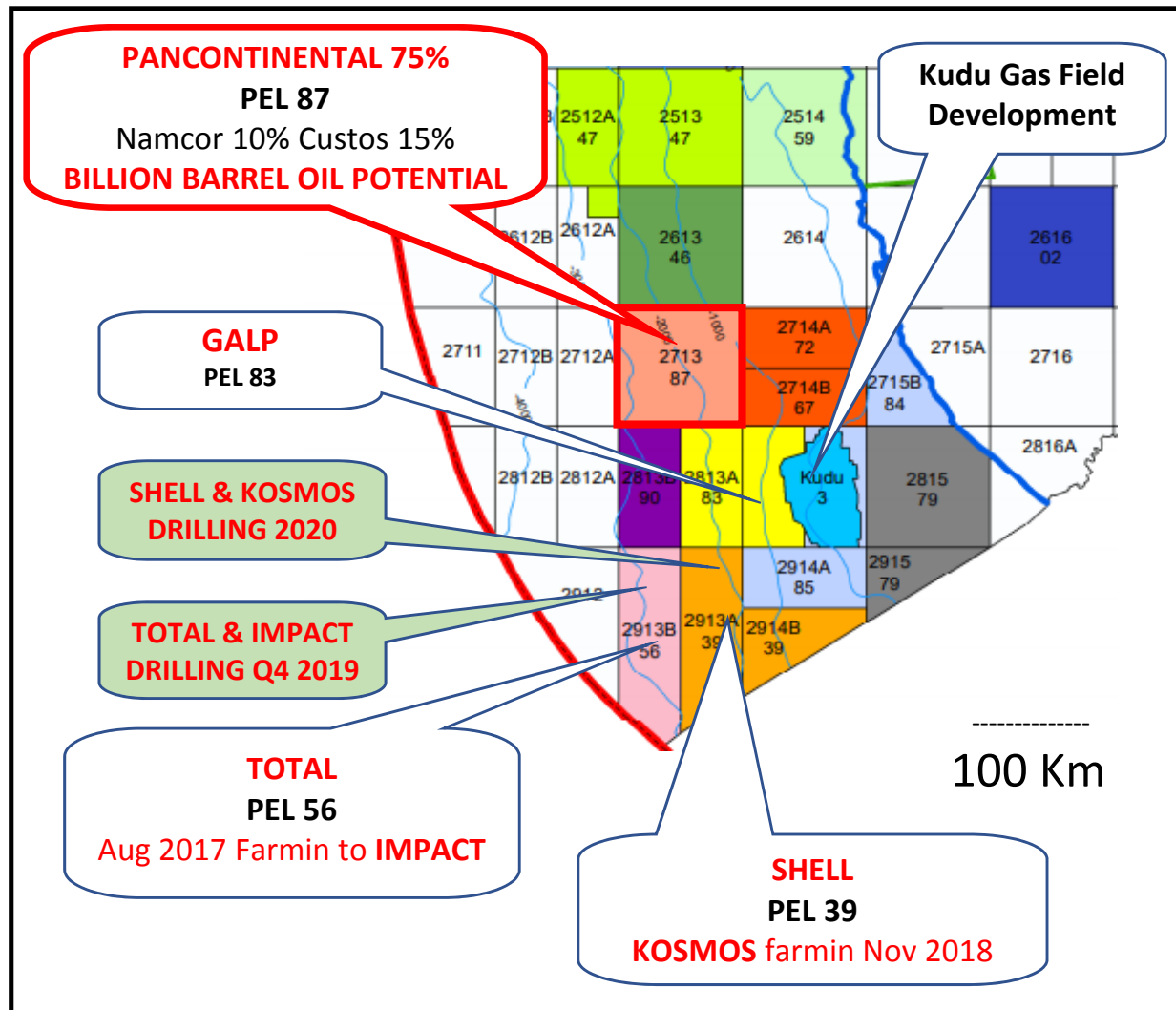
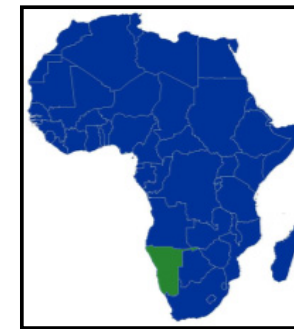
2D TIME DOMAIN seismic line (not water compensated)

PEL 87 – COMPETITOR ACTIVITY

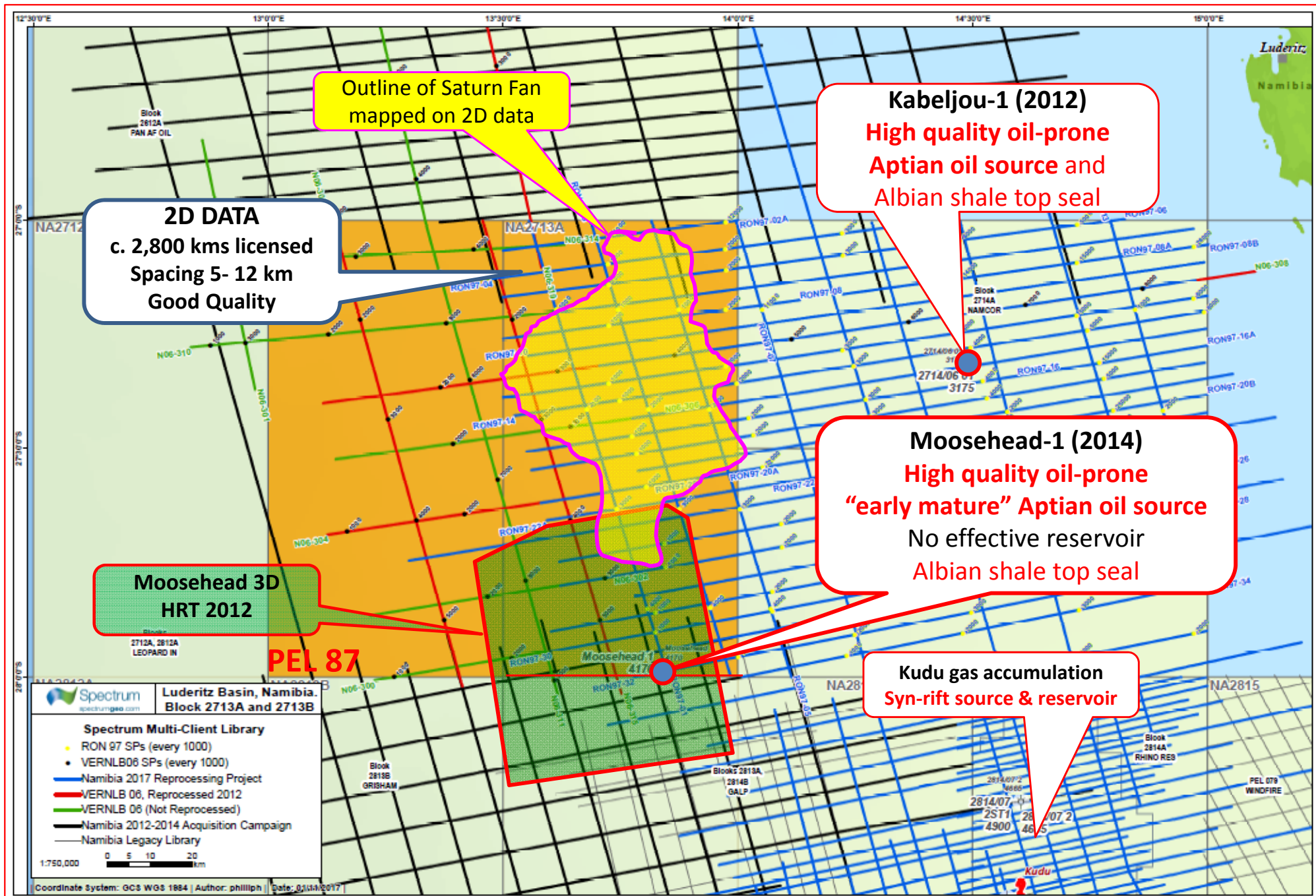
* Pancontinental 75%, Operator

- Licence commenced 23 January 2018
- 10,947 km² block, offshore Orange Basin

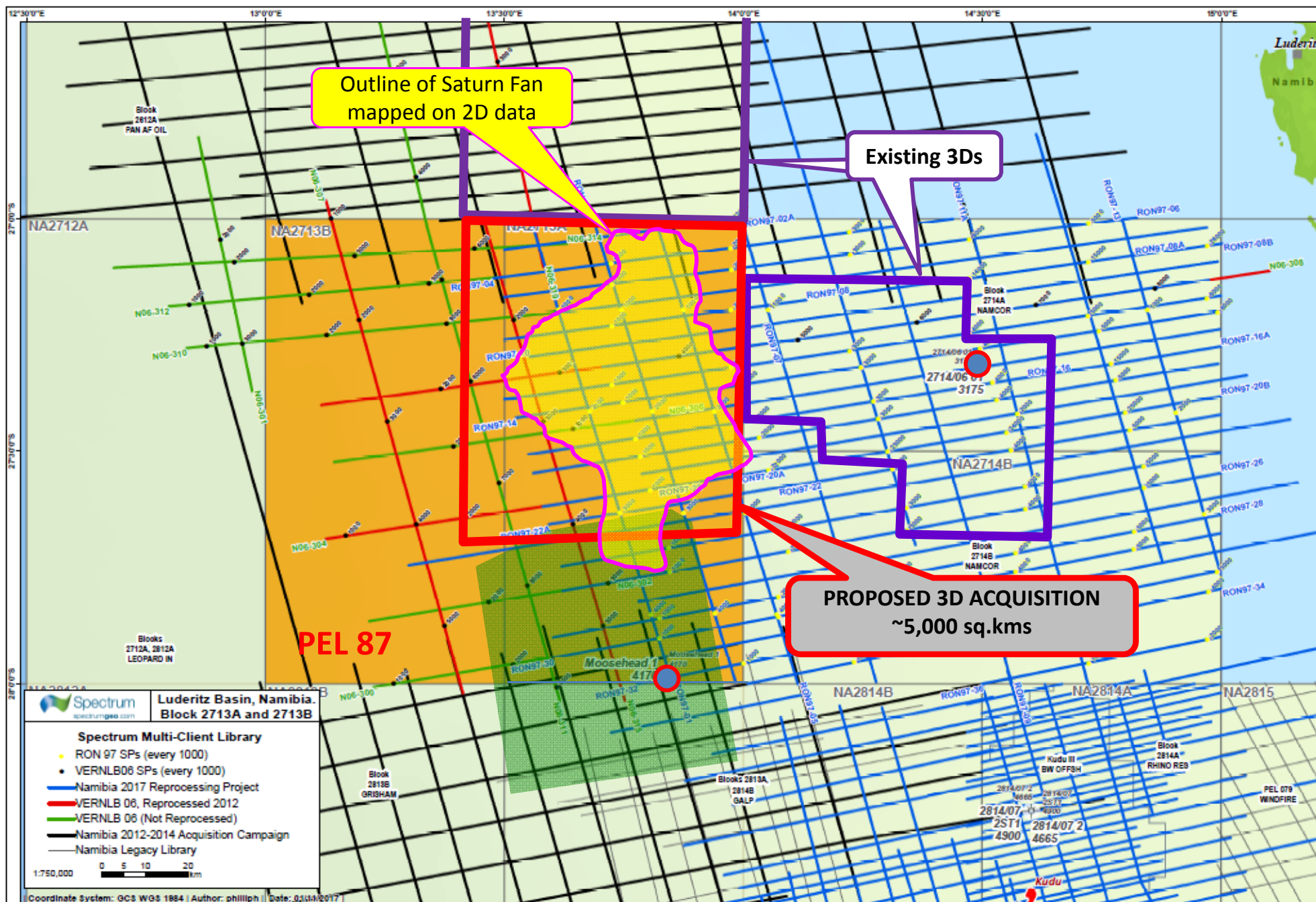
* High level of local activity (**SHELL, TOTAL, KOSMOS** etc)



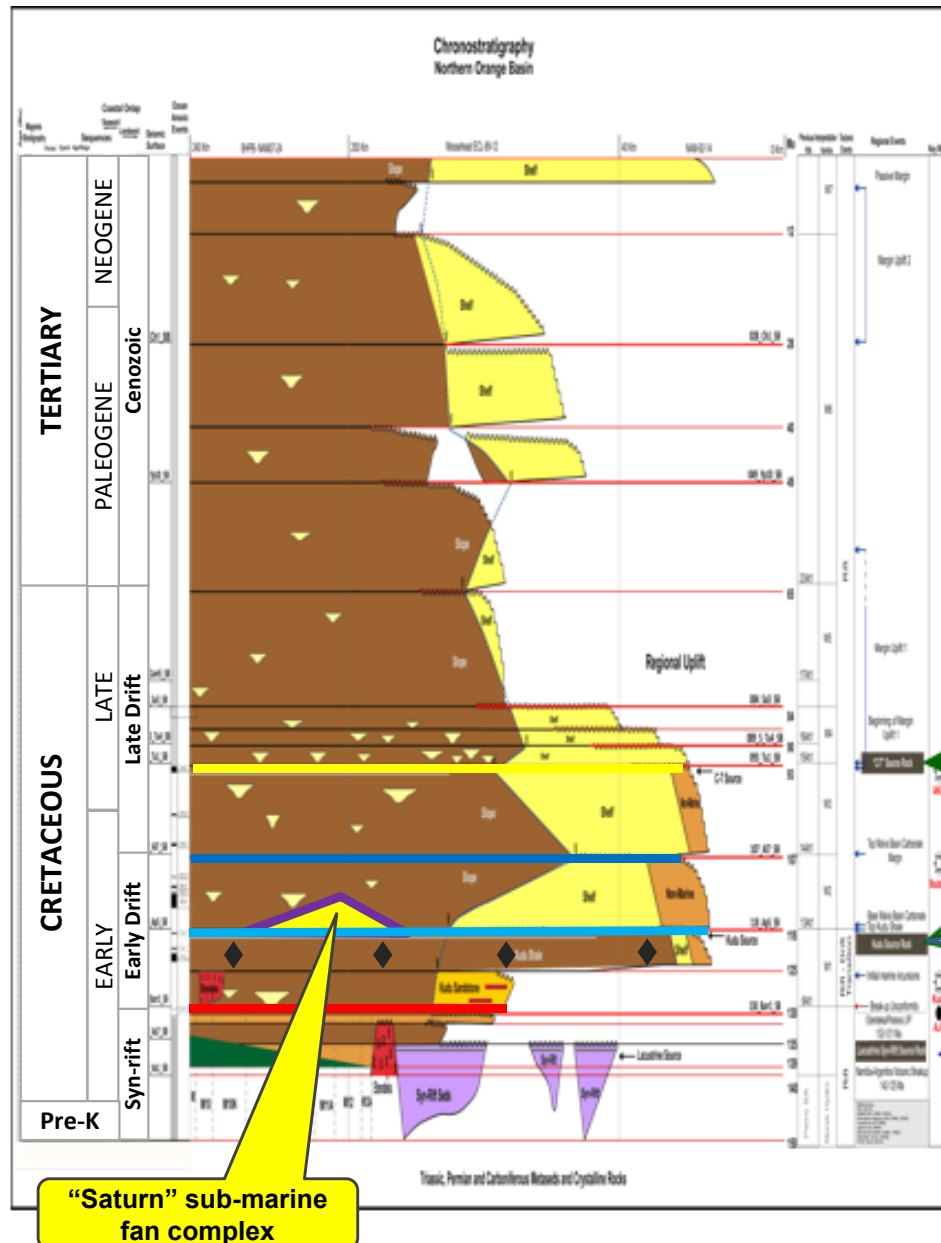
PEL 87 - DATA & OFFSET WELL MAP



PROPOSED 3D AND ADJACENT SURVEYS



SOURCE ROCKS



- Three oil sources have been positively identified
 - HRT Wells and DSDP sites
 - Petroleum occurrences
 - Depositional analogues
- Pre-rift (Jurassic ?) sources
 - Probably only high maturity gas

WELL DEVELOPED MATURE OIL SOURCE IN PEL 87

C-T Marine Anoxic

Barremian-Aptian Transgressive Marine Shale

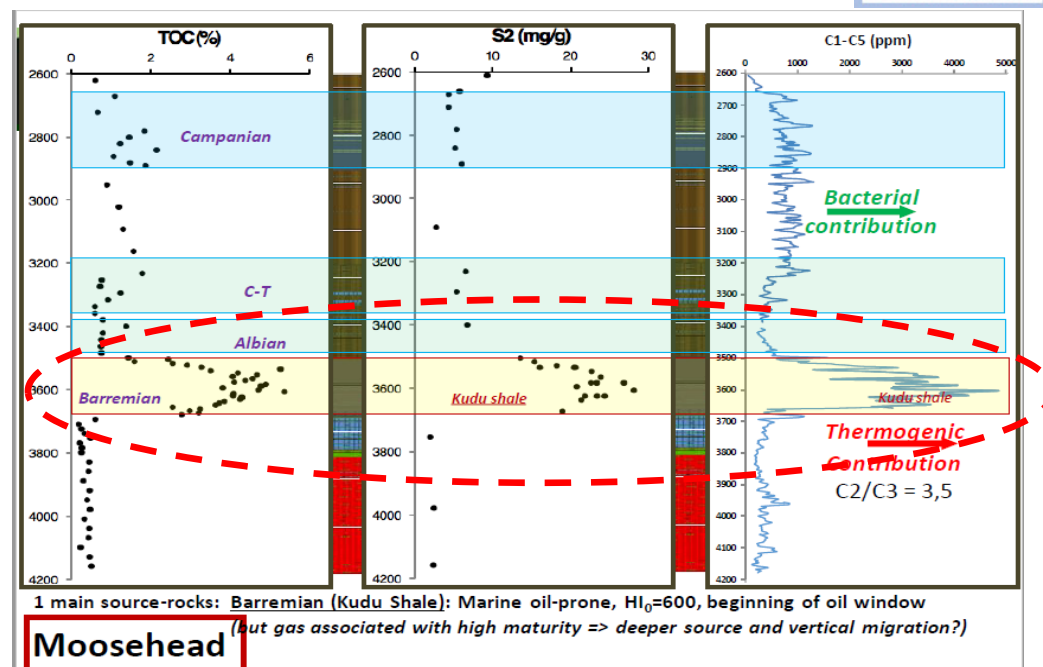
Lacustrine Rift Lake

SOURCE - QUALITY AND MATURITY



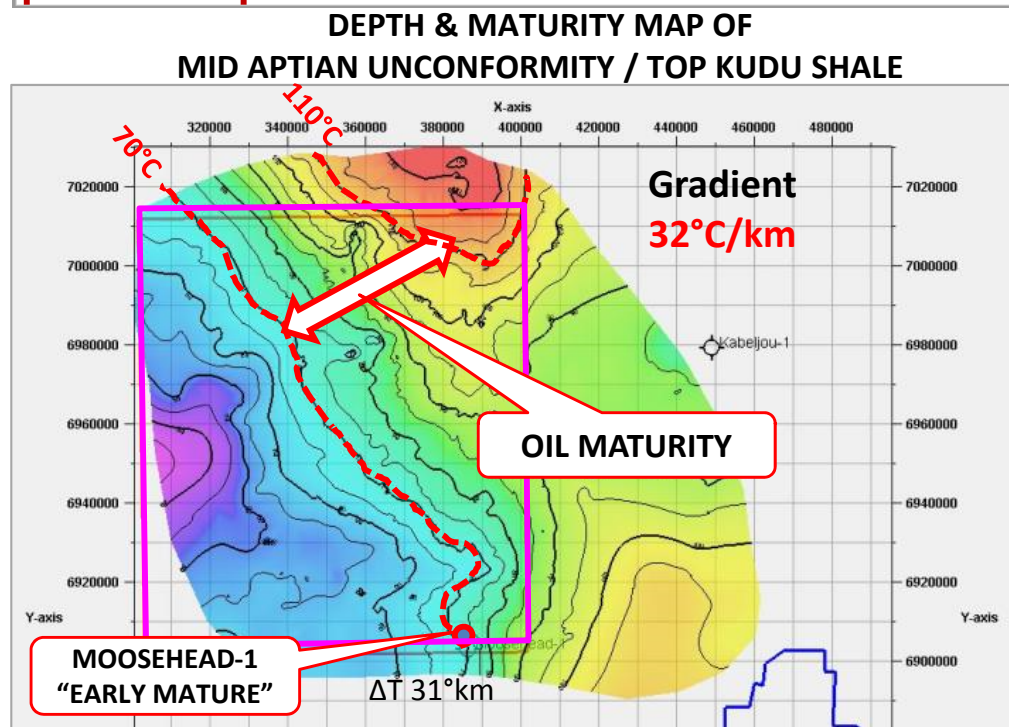
EARLY POST RIFT SOURCE (BARREMIAN-APTIAN)

- Regionally correlatable “Kudu Shale”
- Encountered in all offset wells (Kudu, Moosehead and Kabeljou)
- 200m-300m thick
- TOC ~4% (Max ~ 10%) HI~600
- Oil prone
- Marginally mature in offset wells

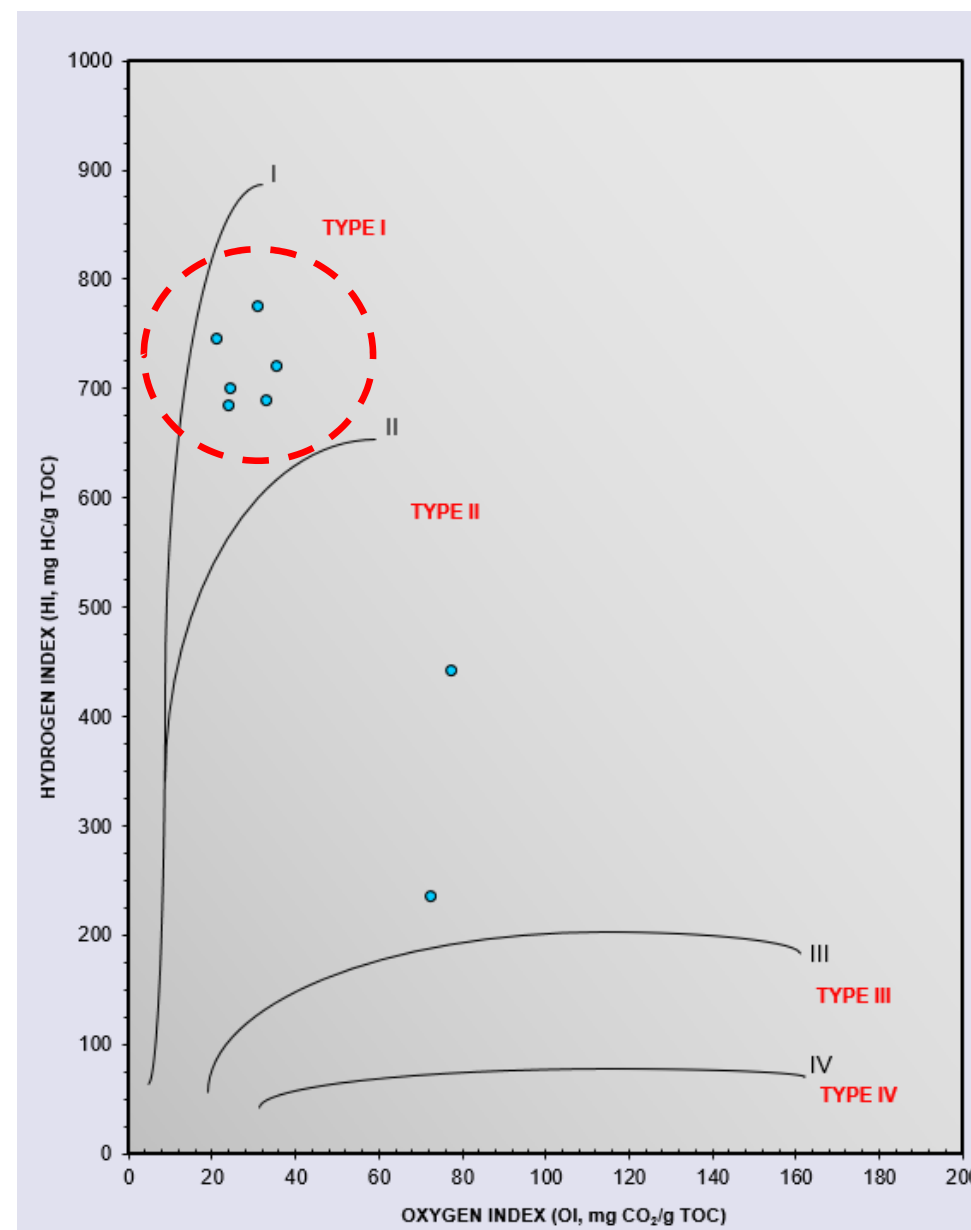
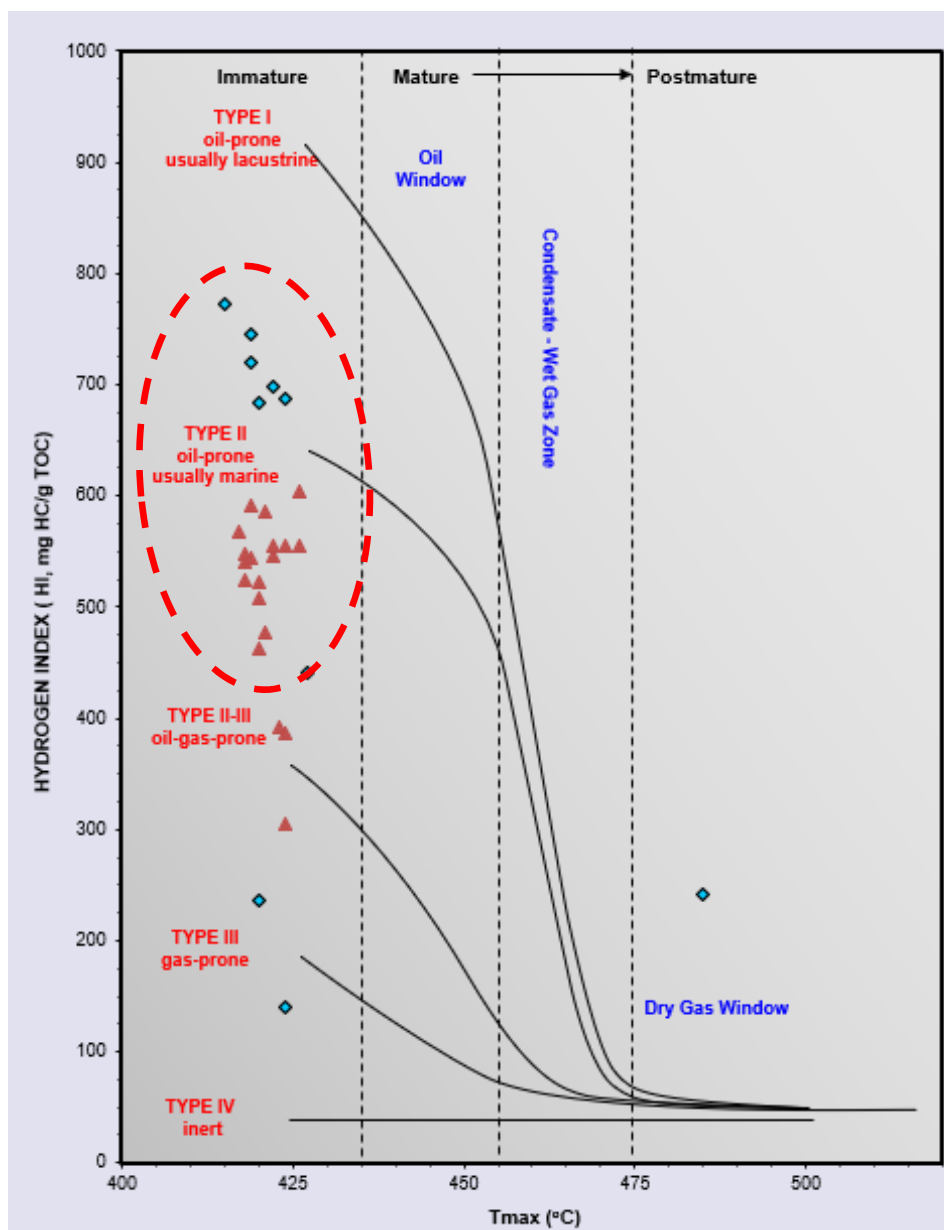


MATURITY MODELLING

- Modelling shows Kudu Shale oil mature in a zone striking NW-SE between Moosehead-1 and Kabeljou-1
- Prediction is consistent with published models
- Base of source has higher maturity than mapped (at top of source interval)



MOOSEHEAD-1 SOURCE ROCK (WEATHERFORD & IPEX)

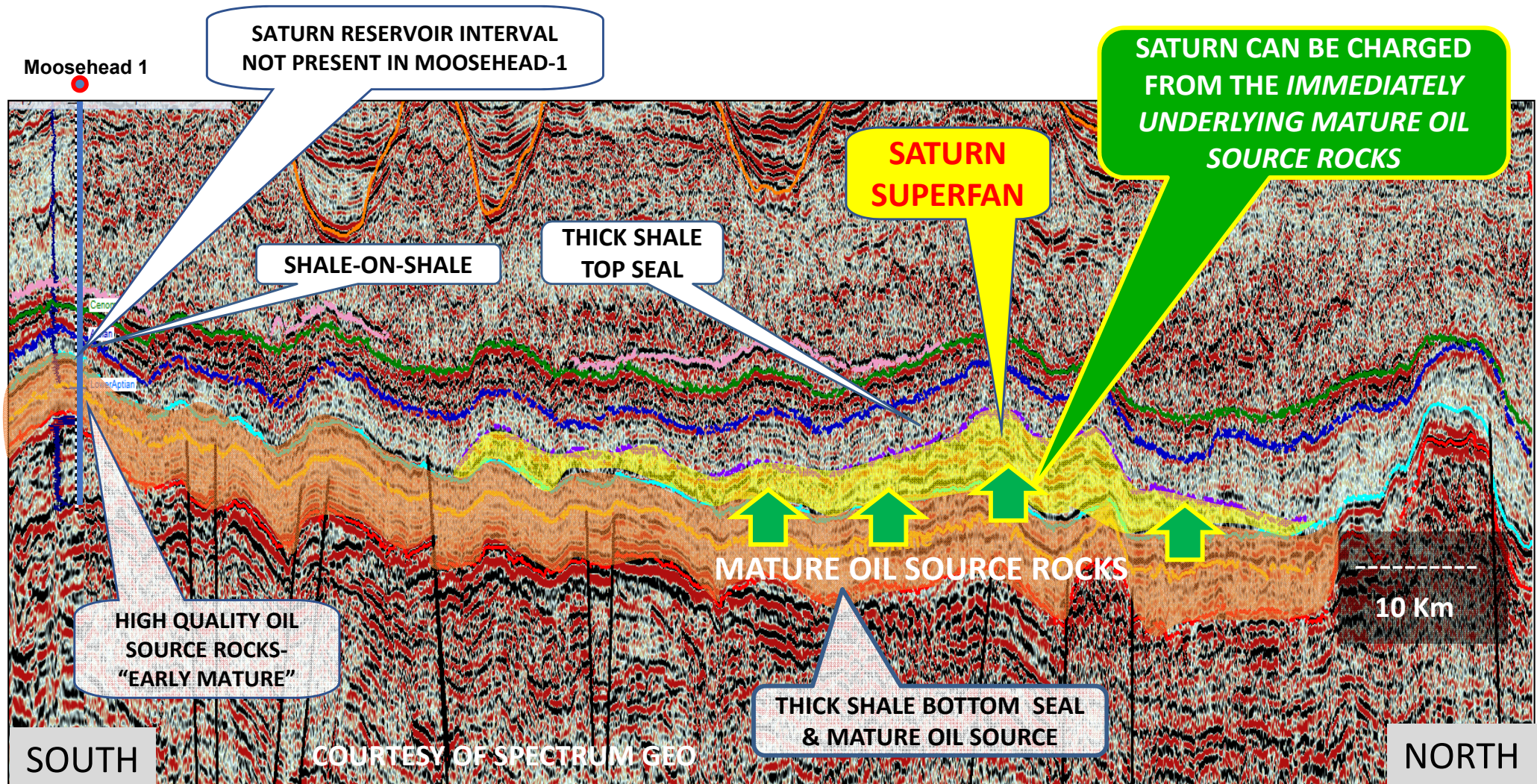


Oil-prone Type I source. Lacustrine(?) – Marine. “Early” mature at well location

SATURN - CHARGE MECHANISM (STRIKE LINE)



- Saturn Fan is ideally located to receive charge from mature Kudu Shale
- Oil tested from HRT Wingat-1 recovered from analogous Aptian sand.
- Reservoir better developed at Saturn



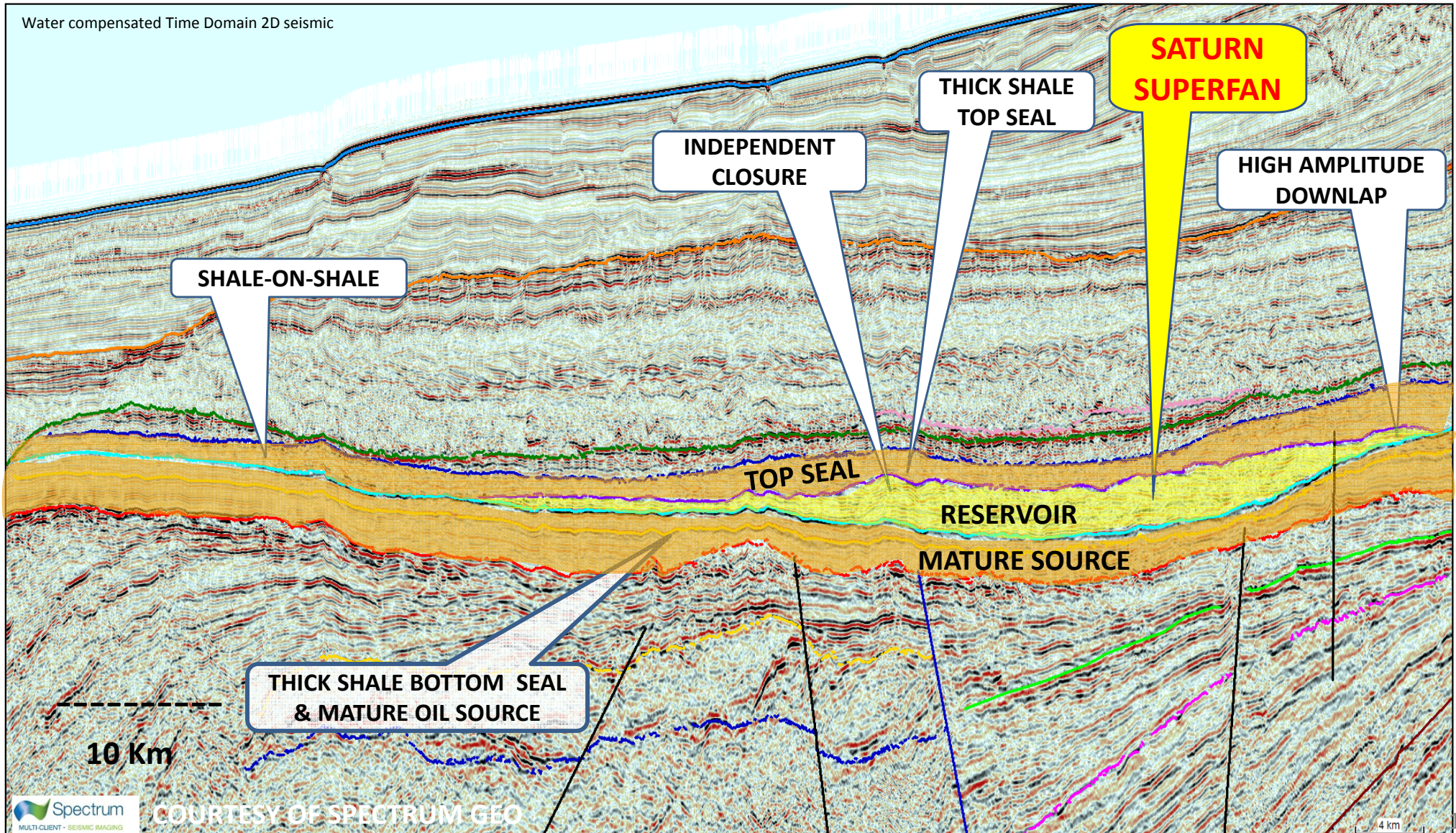
Line courtesy of Spectrum Geo

DIP LINE DATUMED ON HALF SEAFLOOR

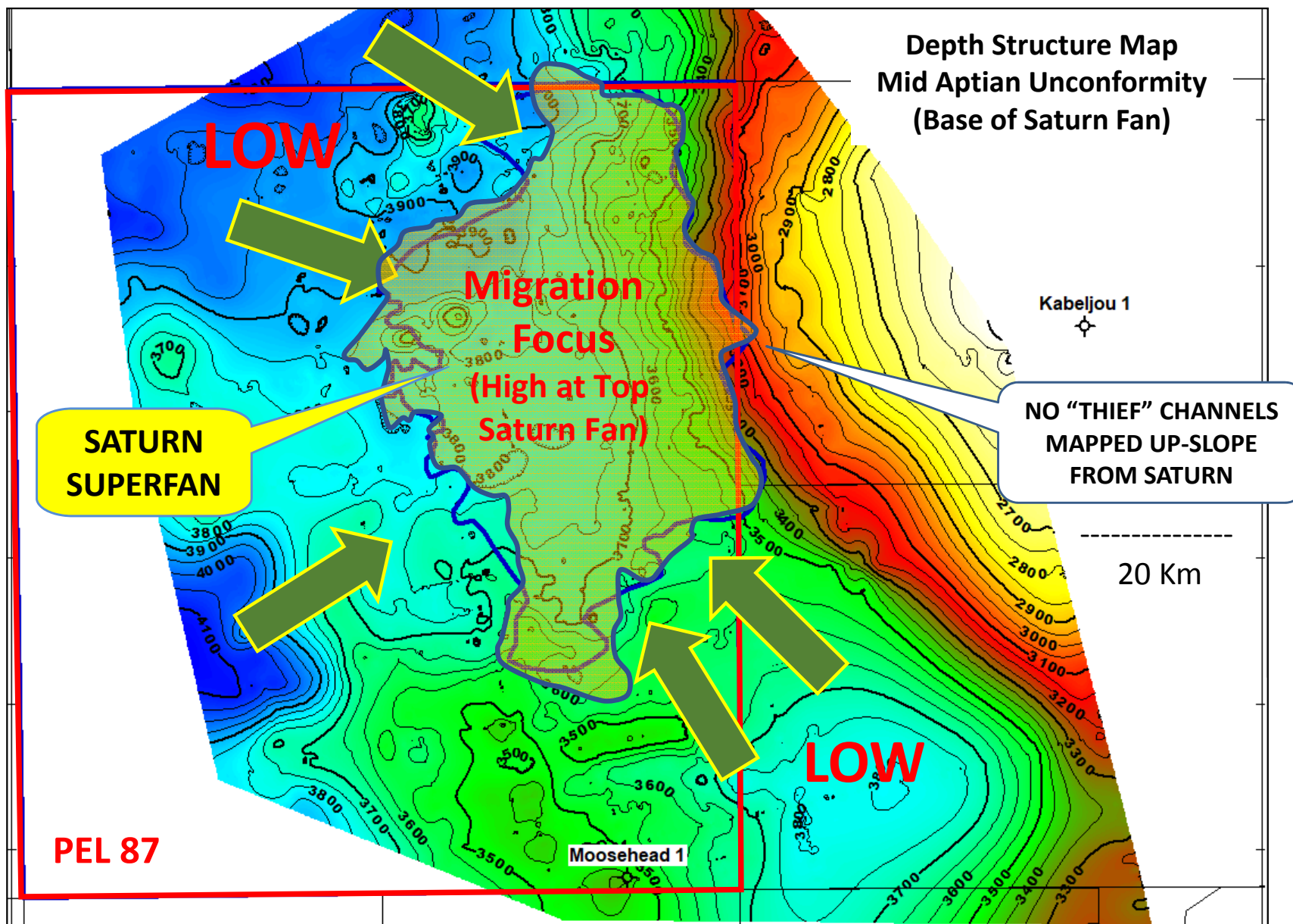


WEST

EAST



SATURN - REGIONAL OIL MIGRATION FOCUS



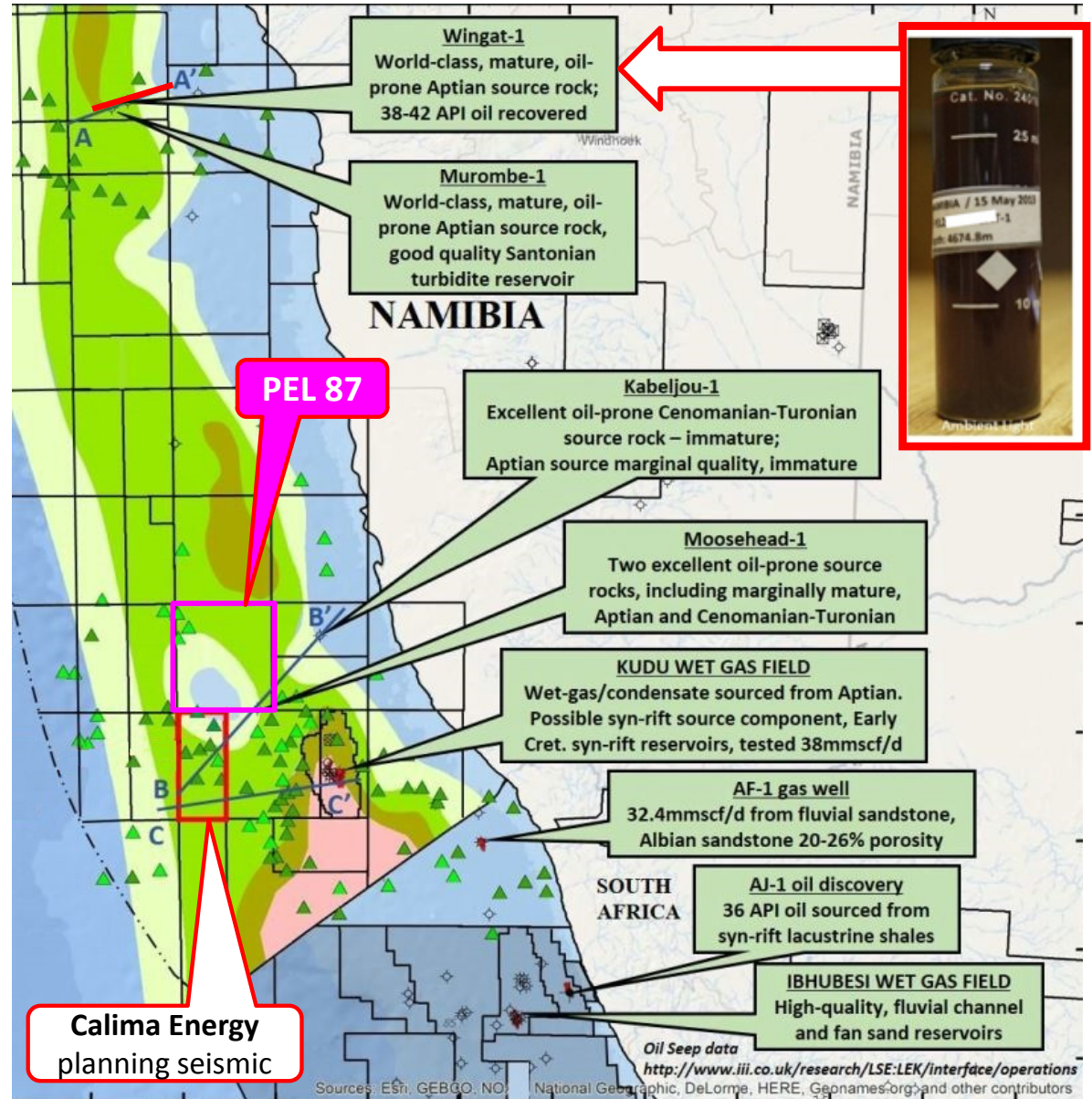
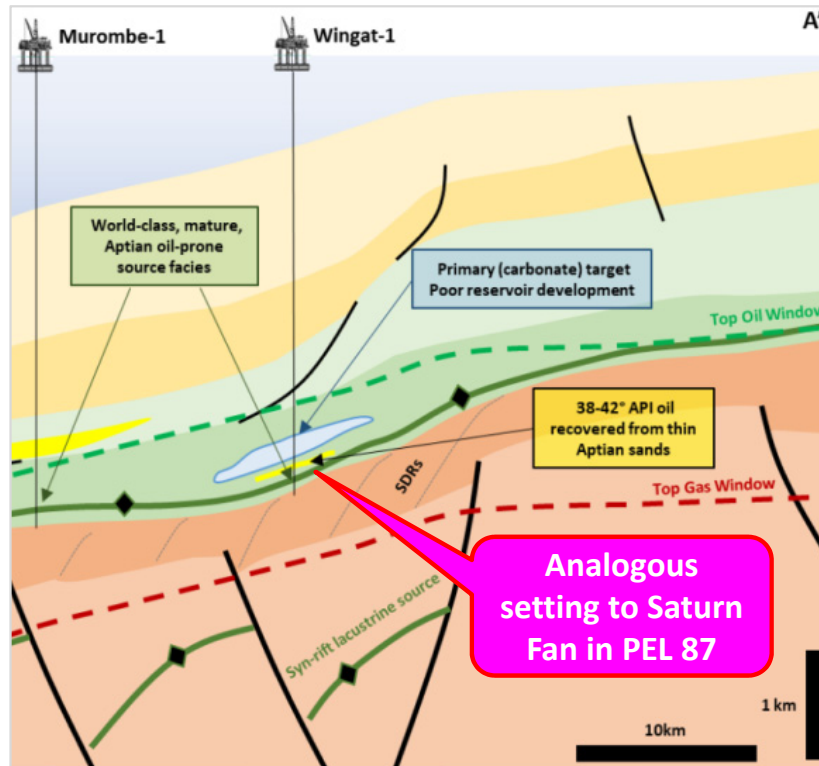
MOVEABLE OIL IN ANALOGOUS SETTING



WSW

ENE

Aptian Source Maturity (modified by Calima Energy after Bray & Lawrence 1998)



- ✦ Sample analysis confirms that the Wingat-1 oil is a light oil
 - ✦ 41° API; GOR 1,079 scf/bbl
 - ✦ 0.819 g/cc density
 - ✦ H₂S 0.00 wt%
 - ✦ Low OBM contamination (less than 8%)
- ✦ Analysis of the presence and ratio of several NC15+ elements has verified HRT's assumptions on the depositional model of an Aptian age transgressive marine source rock (*present in the Orange Basin but previously not verified in the Walvis Basin*)

Text from HRT (Mello 2014)

"Oil and Source Rock Systems Offshore Namibia"

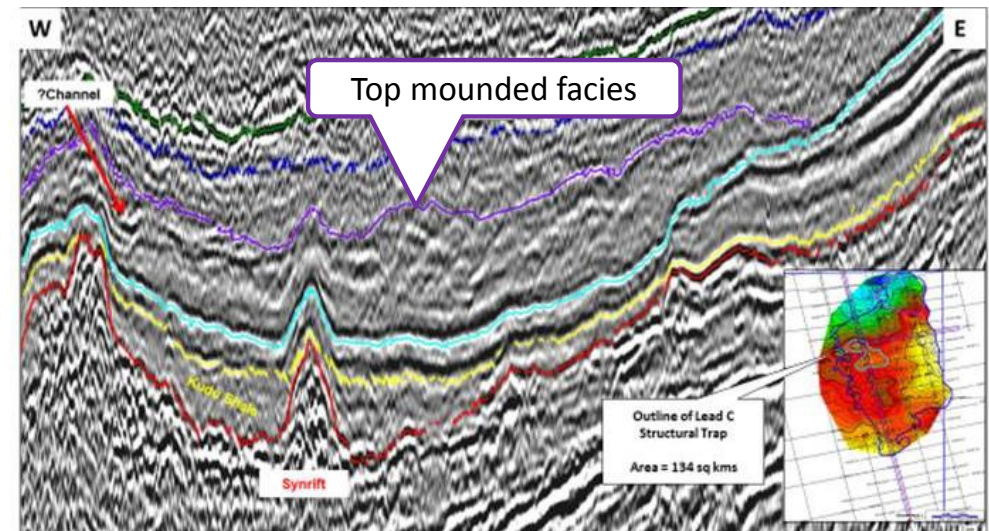
Diagrams from Calima Energy

<http://www.calimaenergy.com/wp-content/uploads/2018/05/CE1-Namibia-10-05-18-002-ASX.pdf>

SATURN SUPERFAN - RESERVOIR POTENTIAL

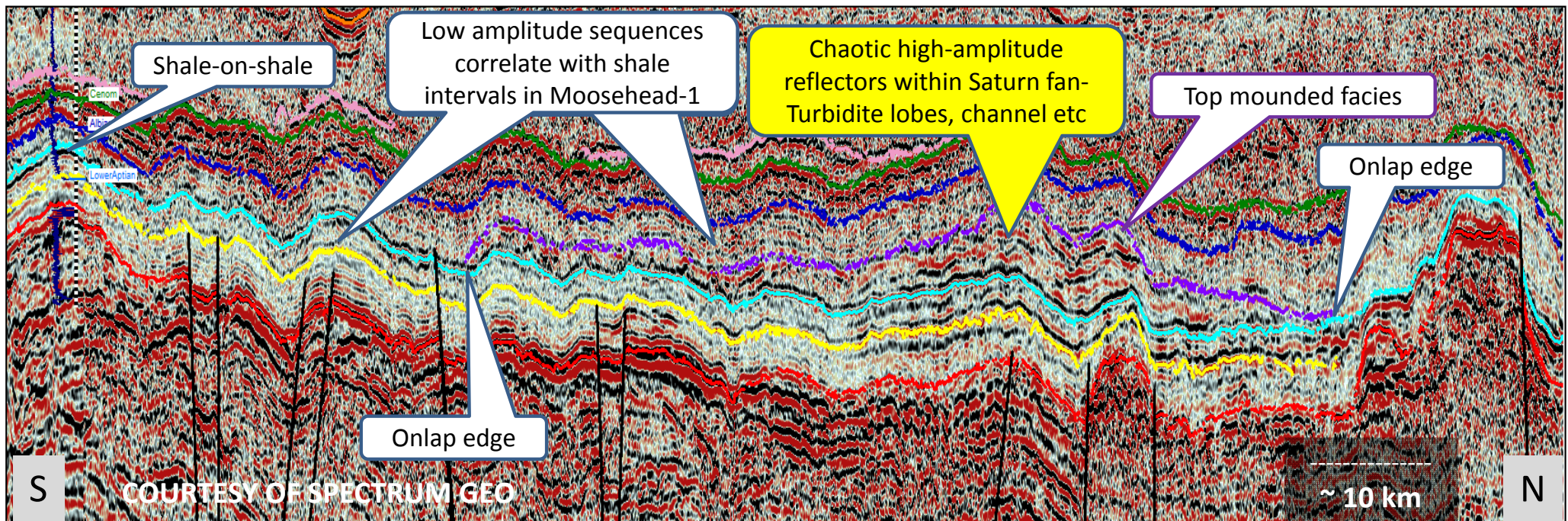


- Well defined anomalous wedge overlying mid-Aptian Unconformity
- Seismic facies consistent with sandy facies within a dominantly argillaceous section (encountered in offset wells)
- Fan mapped on 2D seismic with no eastern channel input (no up-dip “Thief Channels”) which enhances stratigraphic trap potential
- Lateral submarine sand transport proposed



Seismic courtesy of Spectrum Geo

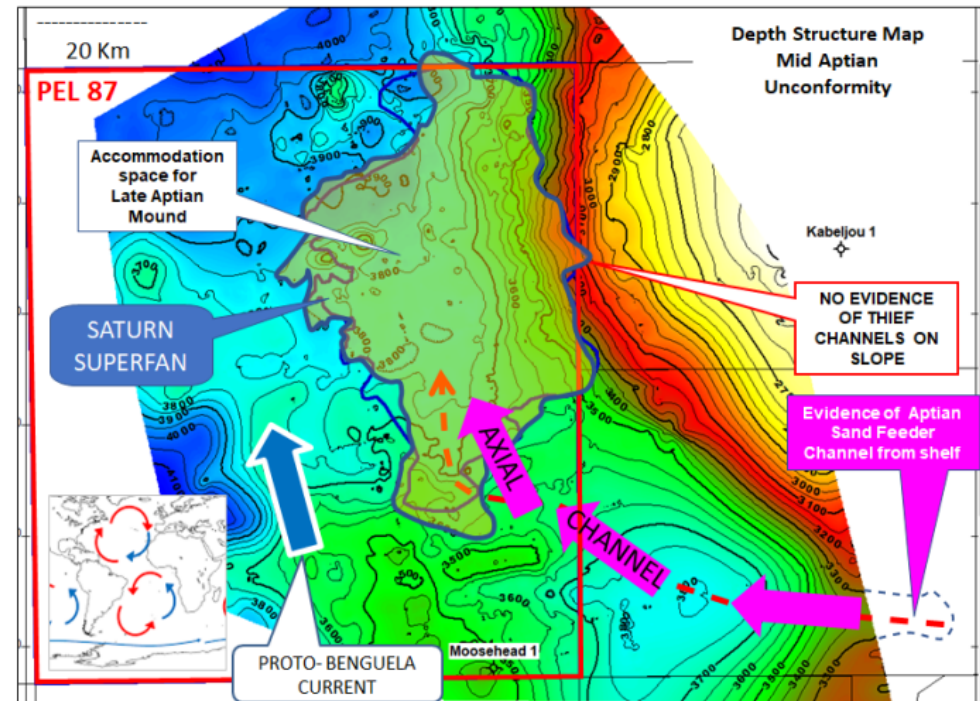
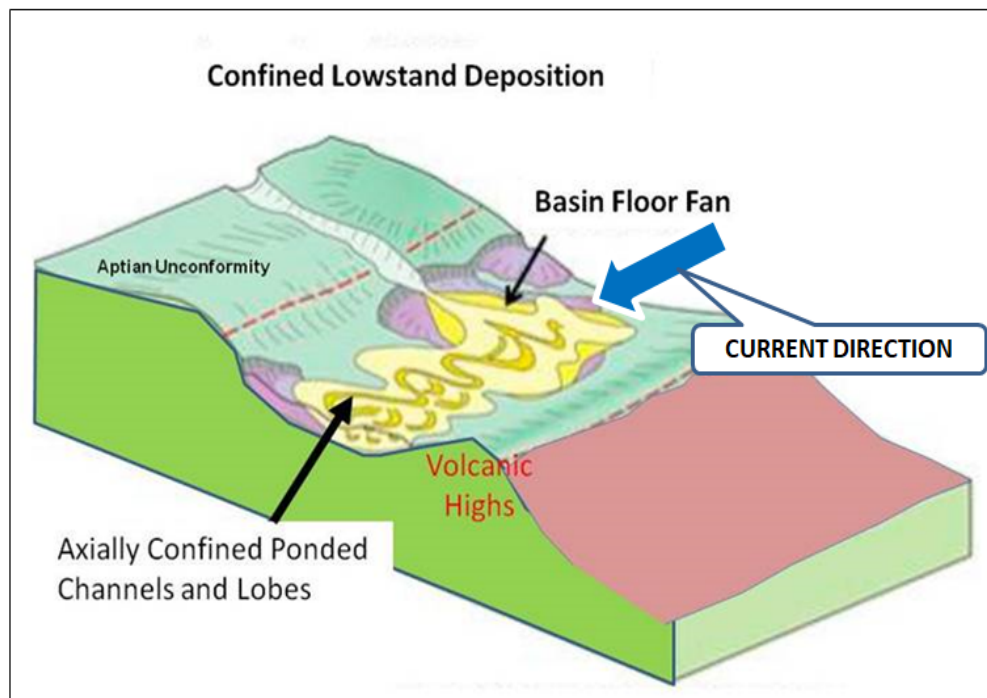
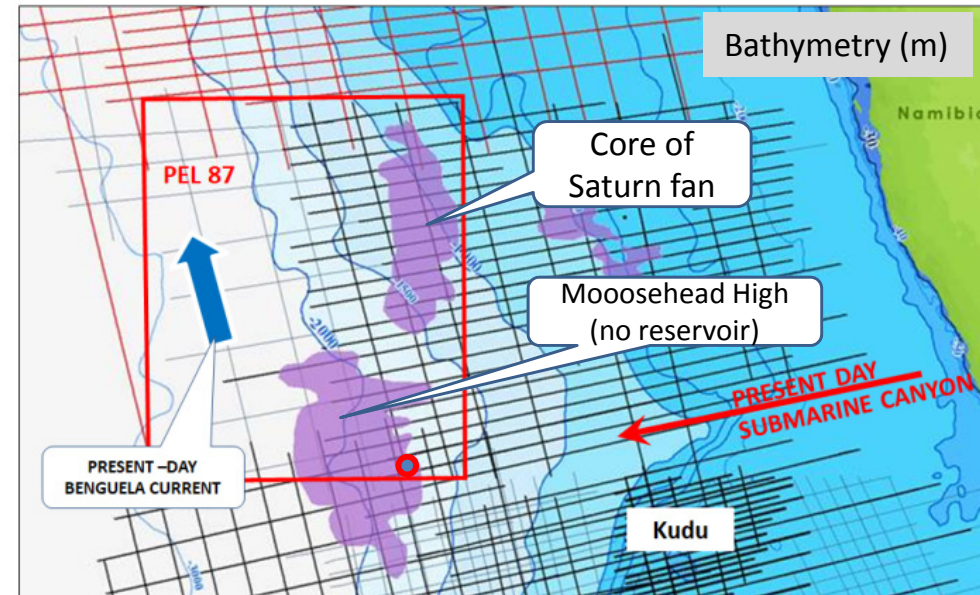
● Moosehead-1



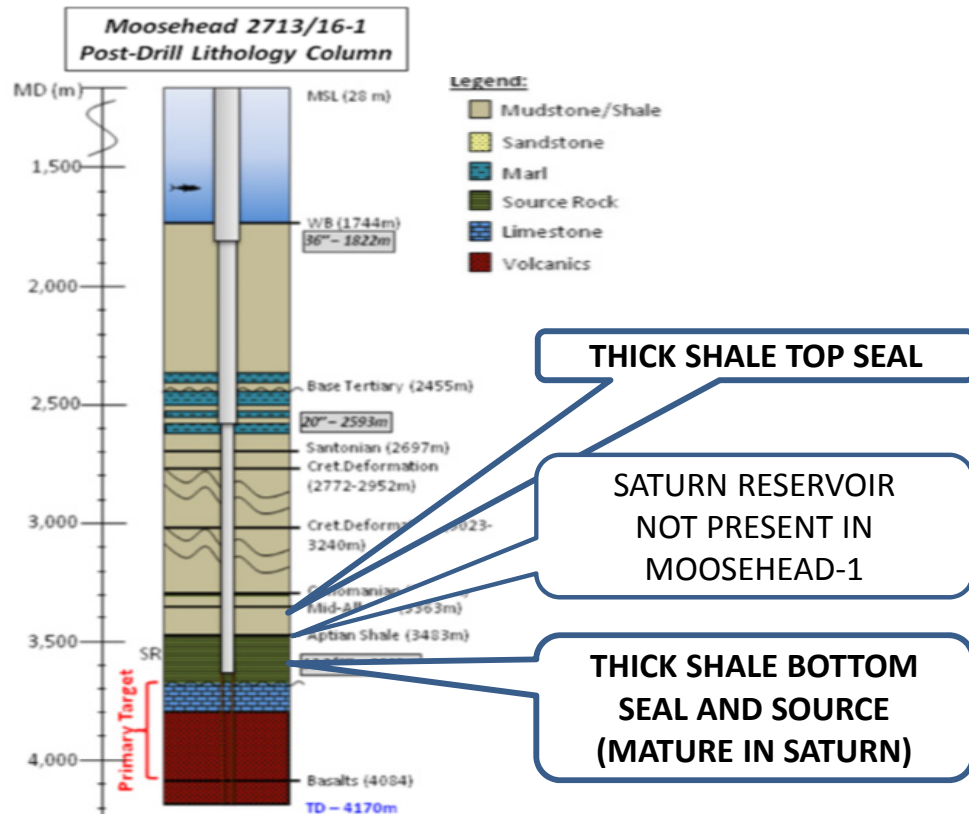
POSTULATED ALBIAN SEDIMENT TRANSPORT

SATURN SUPERFAN

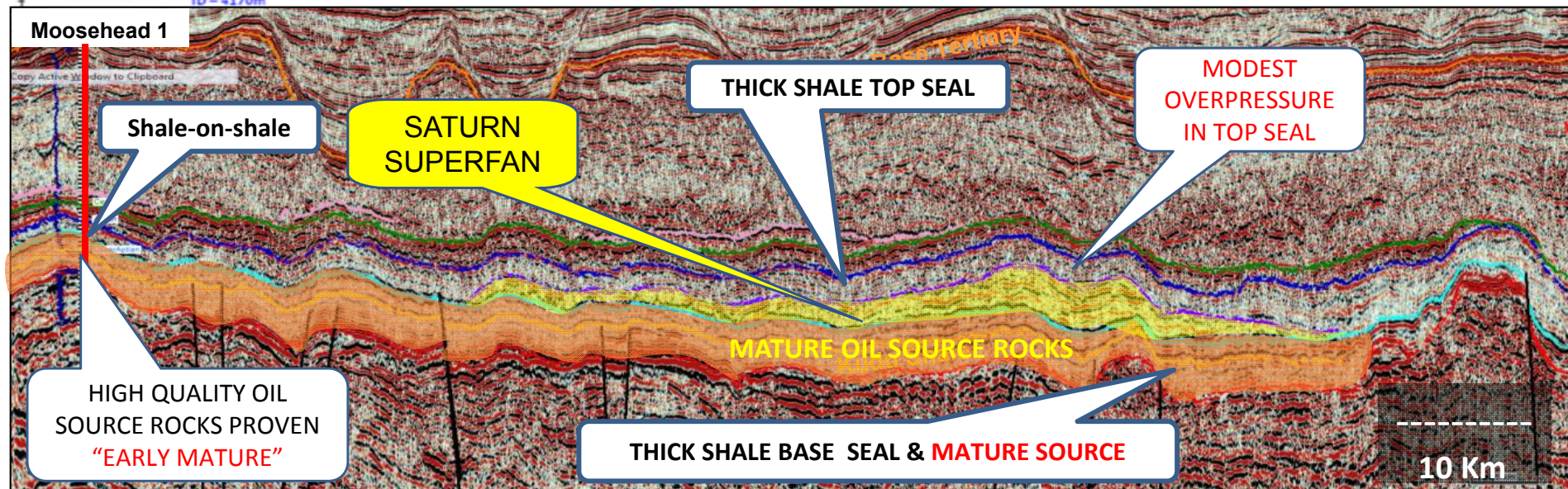
- Seismically defined fan is mapped as being detached from a feeder canyon located to the SE
- Sediment transport (north) is consistent with present, and past, current directions
- Ponding mapped at Saturn greatly enhances stratigraphic trap potential



SEALS - TOP & BASE PROVEN



- Offset wells (Moosehead-1 and Kabeljou-1) shale dominated
- Saturn top and base seals confidently mapped from offset wells
- Local and regional slump detachments sole out on Albo-Aptian, independently demonstrating top seal
- No eastern canyon potential "thief" sequences mapped on Saturn fan

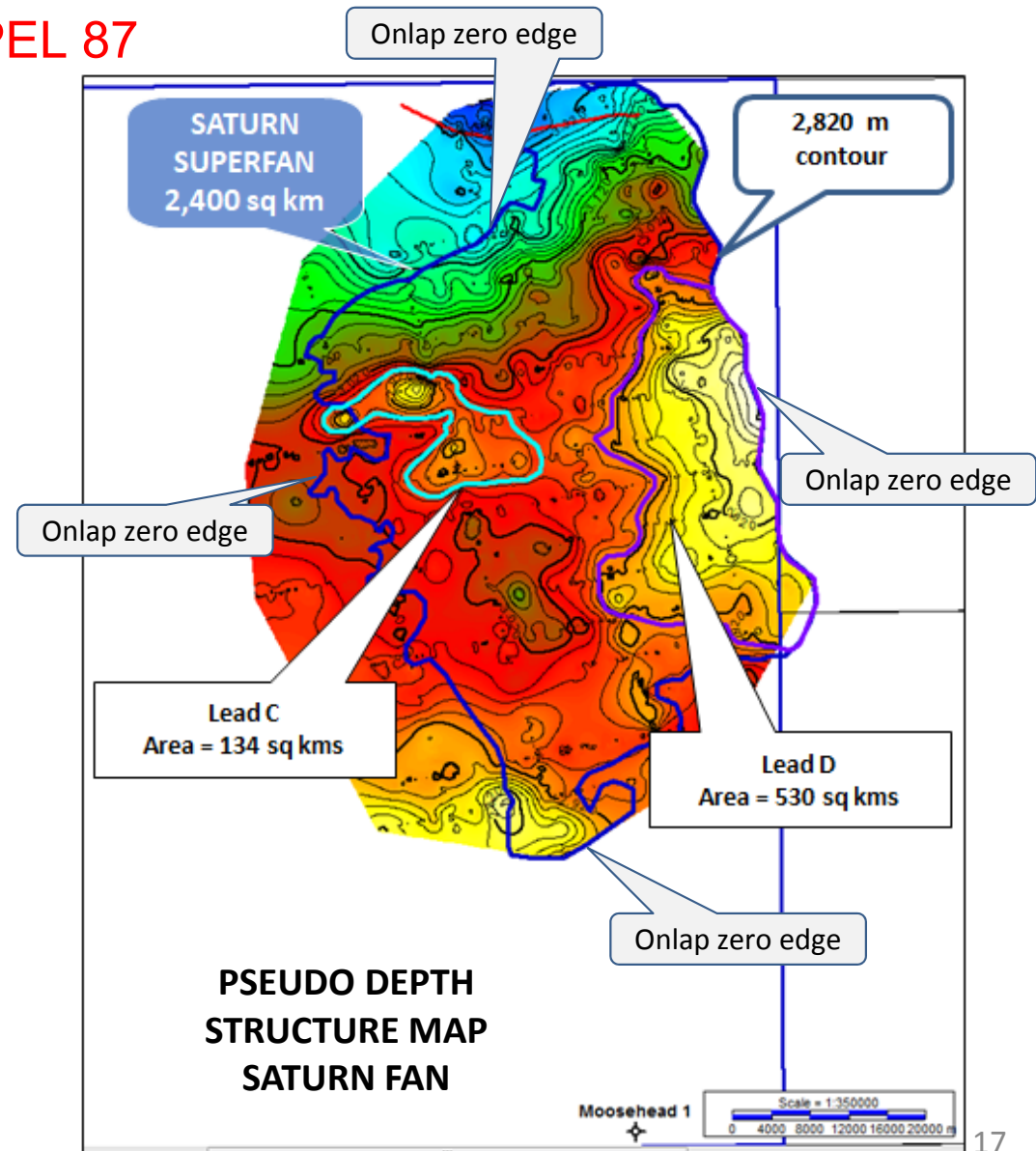
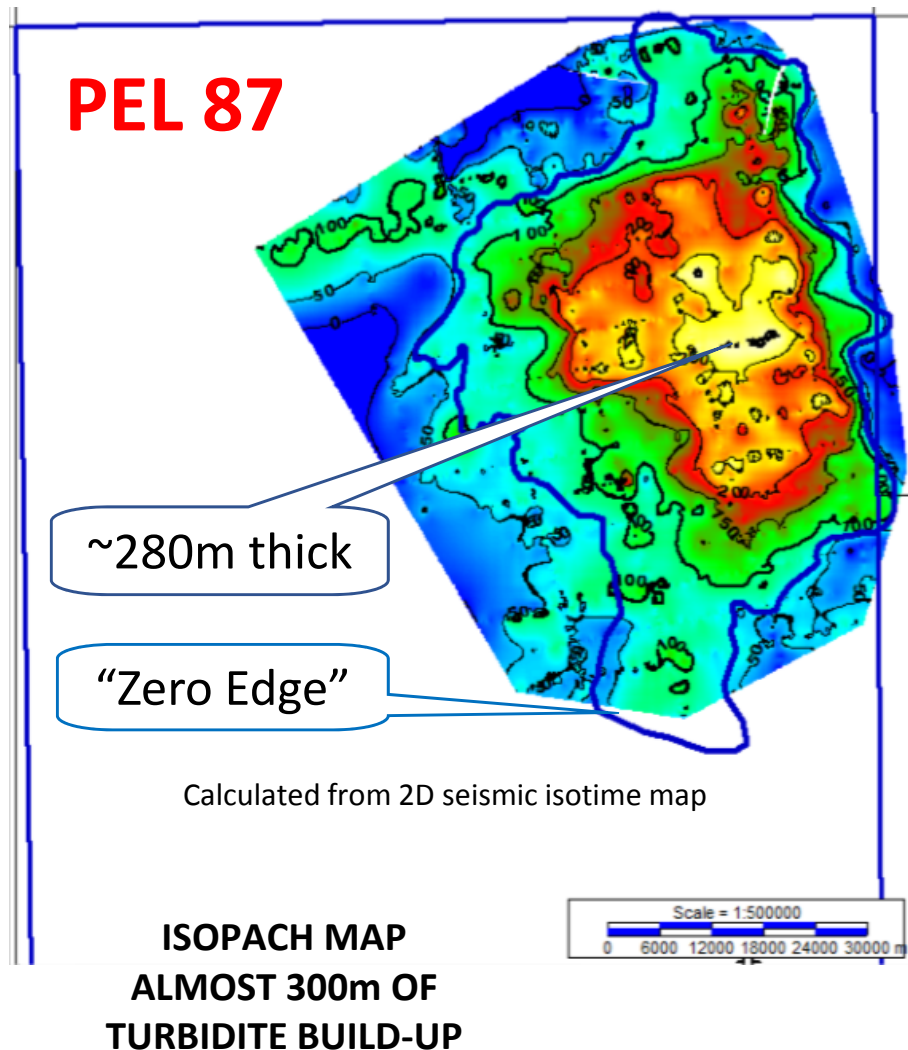


SATURN - 2D MAPPING

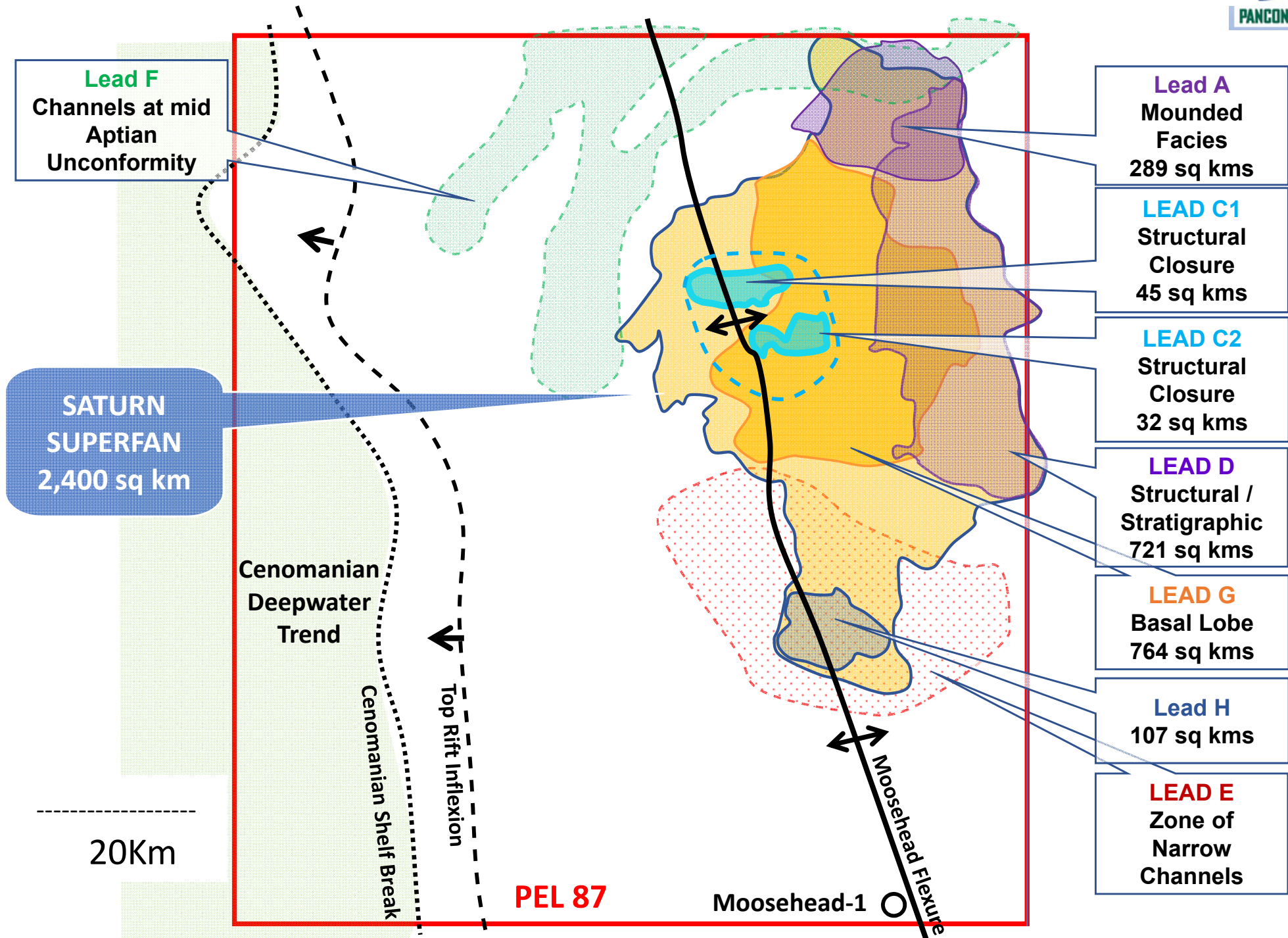


- The Saturn turbidite complex covers 2,400 km² and is about 280 m thick
- Water Depth ~ 1,000m, Drill Depth ~ 3,000m Subsea

* Saturn is located almost 100% within PEL 87



SATURN SUPERFAN - COMPONENT PARTS



HOW MUCH OIL COULD SATURN CONTAIN?

PROSPECTIVE OIL RESOURCES (RECOVERABLE OIL)*



INDIVIDUAL LEADS

PEL 87 Prospective Resources									
Lead Name	Gross Prospective Resources MMbbbls				Pancontinental Net Entitlement ¹ MMbbbls				GPoS
	P90	P50	Mean	P10	P90	P50	Mean	P10	
Lead A	39	152	224	549	28	108	160	391	11%
Lead C1	24	73	102	213	17	52	73	152	19%
Lead D	57	345	829	2026	41	246	591	1444	10%
Lead G	75	349	603	1433	53	249	430	1021	7%
Lead H	6	40	95	234	4	29	68	167	7%

SATURN SUPERFAN AS A SINGLE OIL TRAP

PEL 87 Prospective Resources									
Lead Name	Gross Prospective Resources				Pancontinental Net Entitlement ¹				GPoS
	MMbbls				MMbbls				
	P90	P50	Mean	P10	P90	P50	Mean	P10	
Saturn	245	1329	2830	7820	175	947	2016	5572	5%

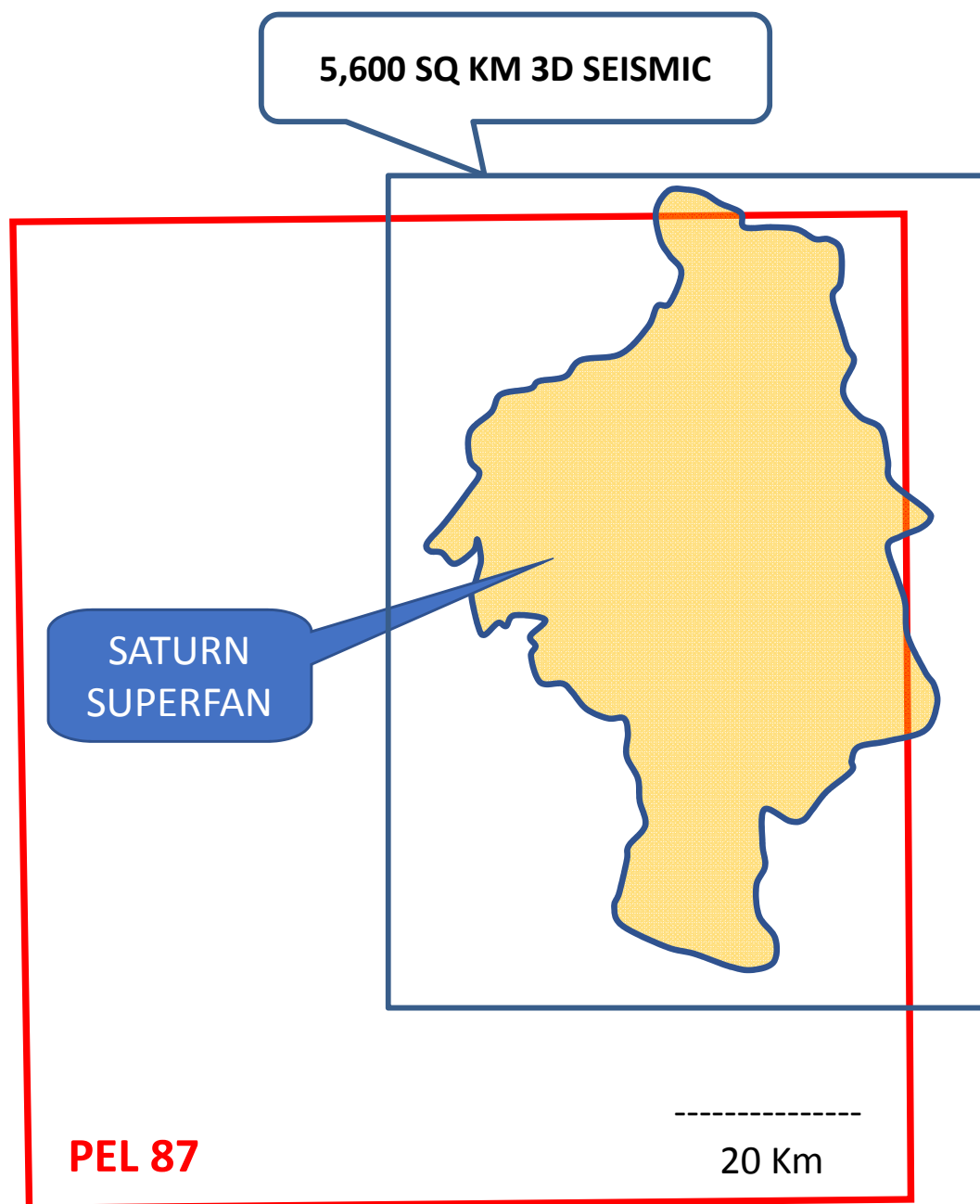
* **Cautionary Statement:** The estimates quoted above were first announced to the ASX on 11 September 2018. The estimated quantities of petroleum that may potentially be recovered by the application of a future development project(s) relate to undiscovered accumulations. These estimates have both an associated risk of discovery and a risk of development. Further exploration appraisal and evaluation is required to determine the existence of a significant quantity of potentially moveable hydrocarbons. The company confirms that it is not aware of any new information or data that, in its opinion, materially affects the information included in the relevant market announcement and that all the material assumptions and technical parameters underpinning the estimates in the relevant market announcement continue to apply and have not materially changed. See Disclaimers for further information.

** Estimated chance of finding oil based on risk relating to presence of: Trap X Reservoir X Seal X Source X Charge

*** The overall Saturn Superfan incorporates all of the other Leads

Note 1- PCL share is its Entitlement Share, net of applicable royalties and equates to 71.25%

FARMOUT OUTLINE



FARMOUT

Pancontinental holds a 75% interest and Operatorship of PEL 87, and is farming out for an accelerated 3D and Drilling programme

Pancontinental is seeking a Farminee who will-

- (i) Undertake a minimum 5,500 sq km 3D seismic survey**
- (ii) Drill minimum 2 wells**
- (iii) Commence drilling in the near term**
- (iv) Fully fund (i) and (ii)**
- (v) Fulfil certain other negotiated conditions**

- Operatorship available to qualified parties**
- Data room available under Confidentiality Agreement**



OFFSHORE NAMIBIA

PANCONTINENTAL OIL & GAS NL

Head Office – Level 1, 10 Ord Street, West Perth, Western Australia 6005

Postal Address - PO Box 1154, West Perth, Western Australia 6872

Telephone +61 8 6363 7090

Facsimile +61 8 6363 7099

ACN 003 029 543

www.pancon.com.au